

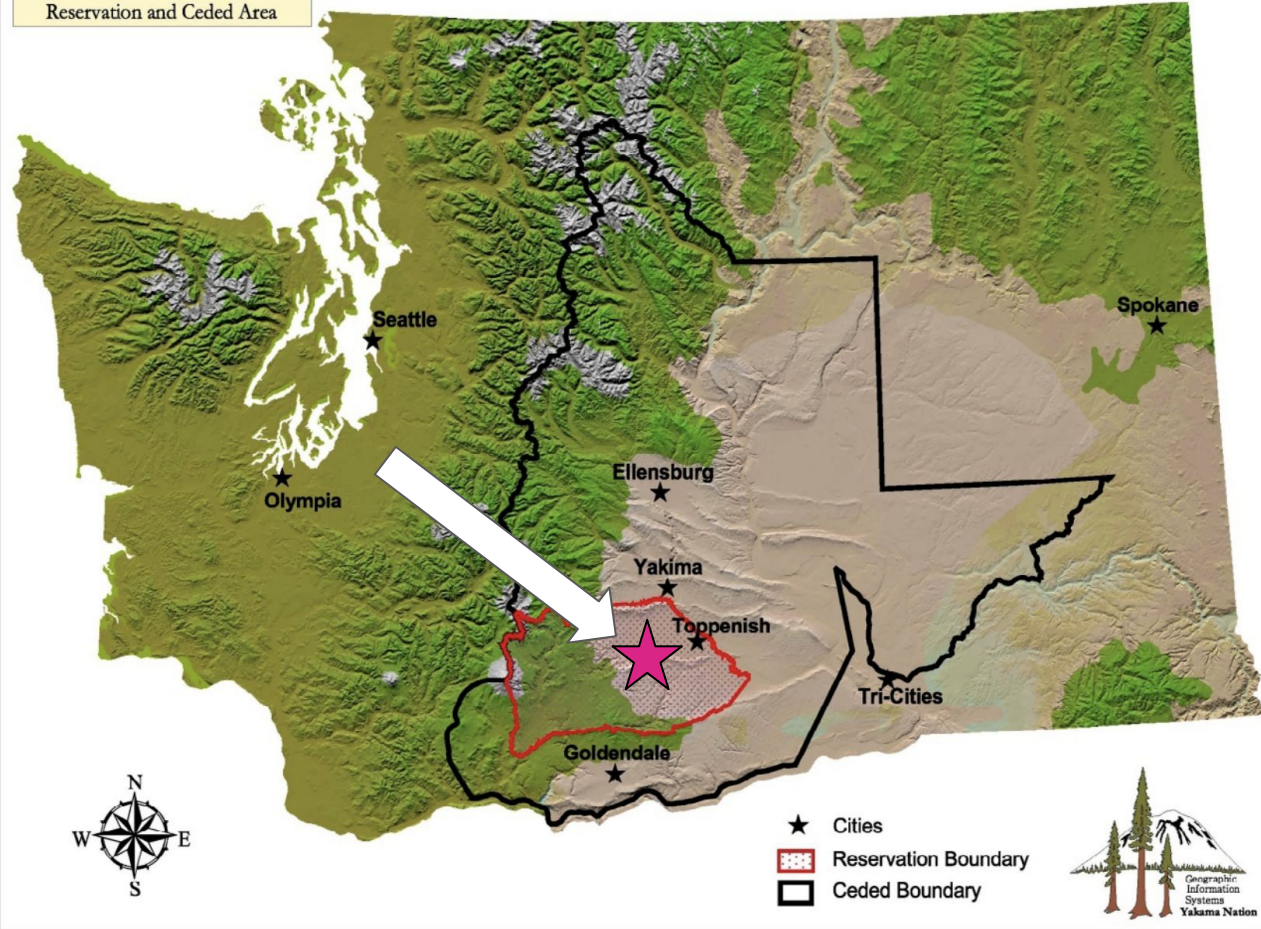
Equity Through Connections

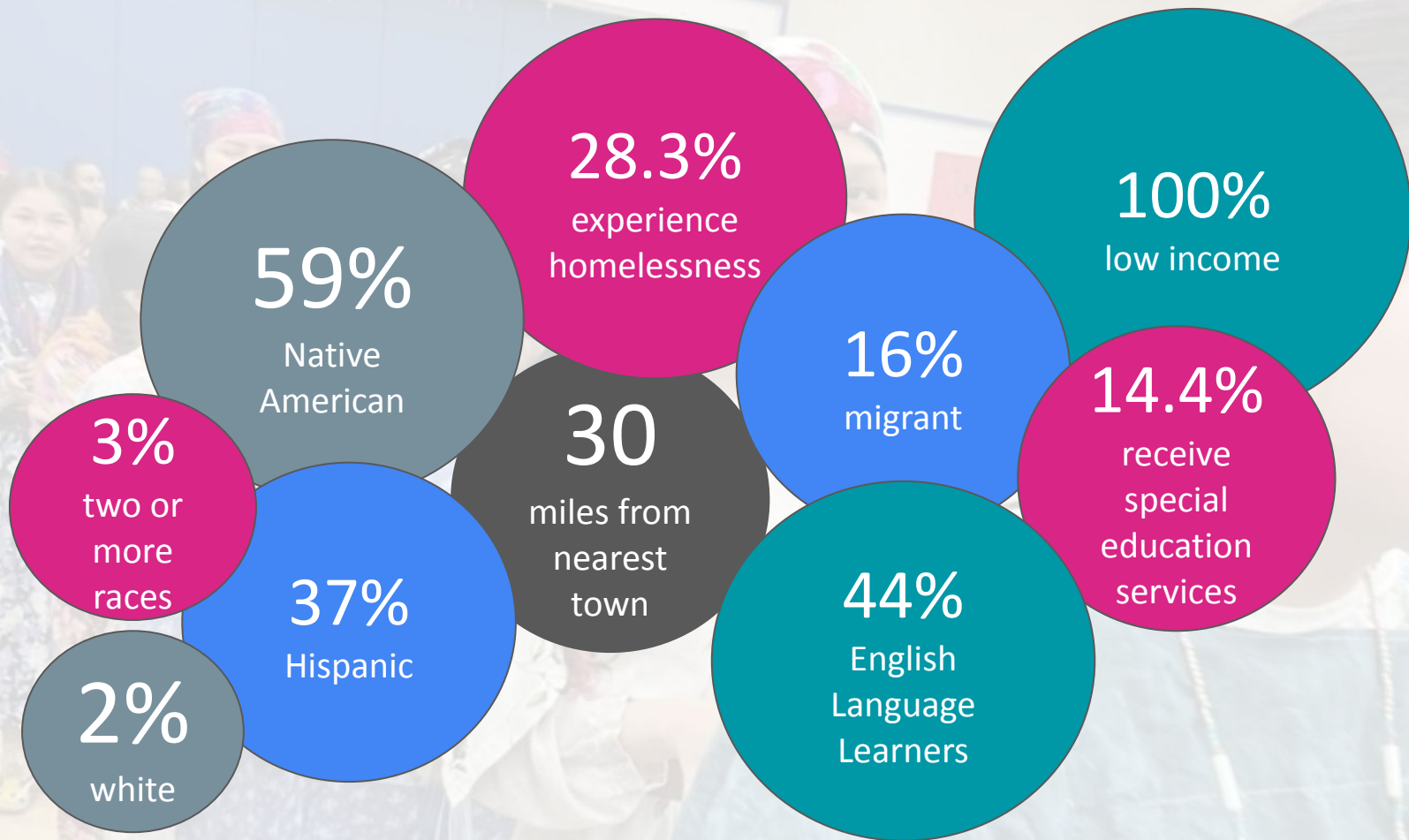
White Swan High School



Yakama Nation

Reservation and Ceded Area



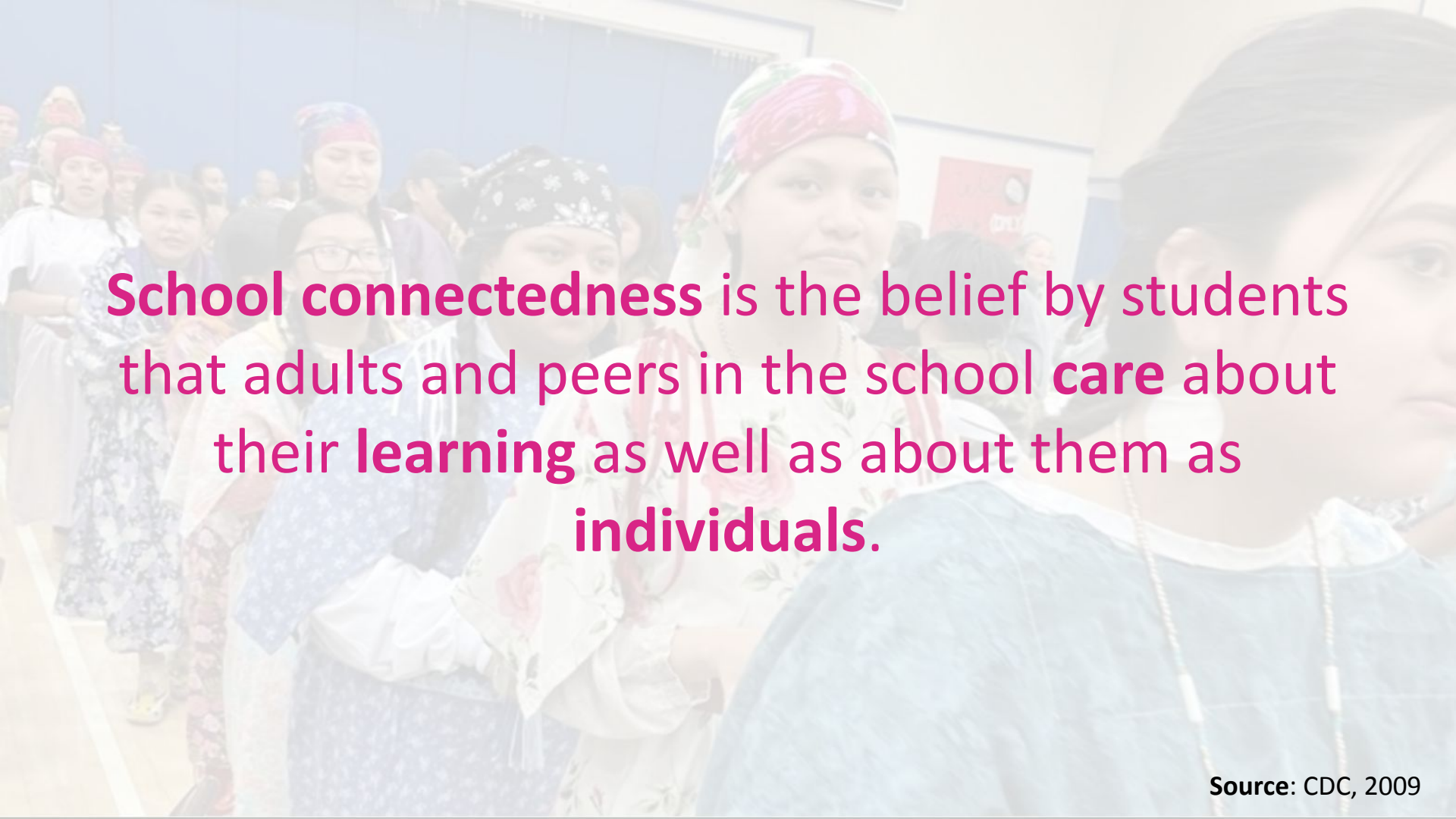




Lack of
Services

poverty

Homeless
ness

A group of students, primarily young women, are shown in traditional attire, including colorful headscarves and patterned dresses. They are standing in a line, possibly in a school hallway or during a cultural event. The background is slightly blurred, showing other students and a blue wall.

School connectedness is the belief by students that adults and peers in the school **care** about their **learning** as well as about them as **individuals**.

Why Connectedness?



Our Data (2021-2022)

Regular Attendance

- 36.2% overall
- 23.7% among Native American students
- 54.2% among Hispanic students

Graduation

- 52%

Discipline ¹

- 80 referrals
- 26 suspensions
- 12 drug and alcohol suspension



¹Data from semester 1

Why Connectedness?

Connectedness



- Violence
- Substance use
- Risky sexual behavior
- Emotional distress
- Suicide ideation

- Physical activity
- Healthy eating
- Grades
- Test Scores
- Attendance
- Graduation

A group of students, primarily female, are captured in a performance or cultural event. They are wearing traditional Filipino clothing, including white blouses with floral patterns and dark headscarves (barrettes). Some are wearing purple skirts, while others are in white. They are standing in a line, and some are holding hands or props. The background is a blue wall. The word "Share" is overlaid in large, bold, pink letters on the left side of the image.

Share

How can schools foster
connectedness?



Four Strategies to Foster Connectedness

1. Family/community mentoring programs
2. Service-learning opportunities
3. Student-led clubs to provide safe spaces
4. Professional development for educators on classroom management

Challenges for Our Master Schedule

- Number of sections needed for each class
- Keep class size smaller (around 20)
- Student need for Credit Completion and retrieval
- Student need for intervention
- Student need for work completion
- Lack of interest and commitment to school (absentee rate)
- Student perception of instructional relevance
- School and community pride and spirit
- Student SEL needs

Meeting the Needs of Our Students



- High Interest Classes
- SEL Needs
- Cultural Connection
- Relevant
- Intervention
- Graduation

Asking the Hard Questions

- Are we really meeting the needs of our students?
- SEL- What are we doing and is it working?
- Do we offer cultural connections and relevance to Students?
- Is our instruction engaging?

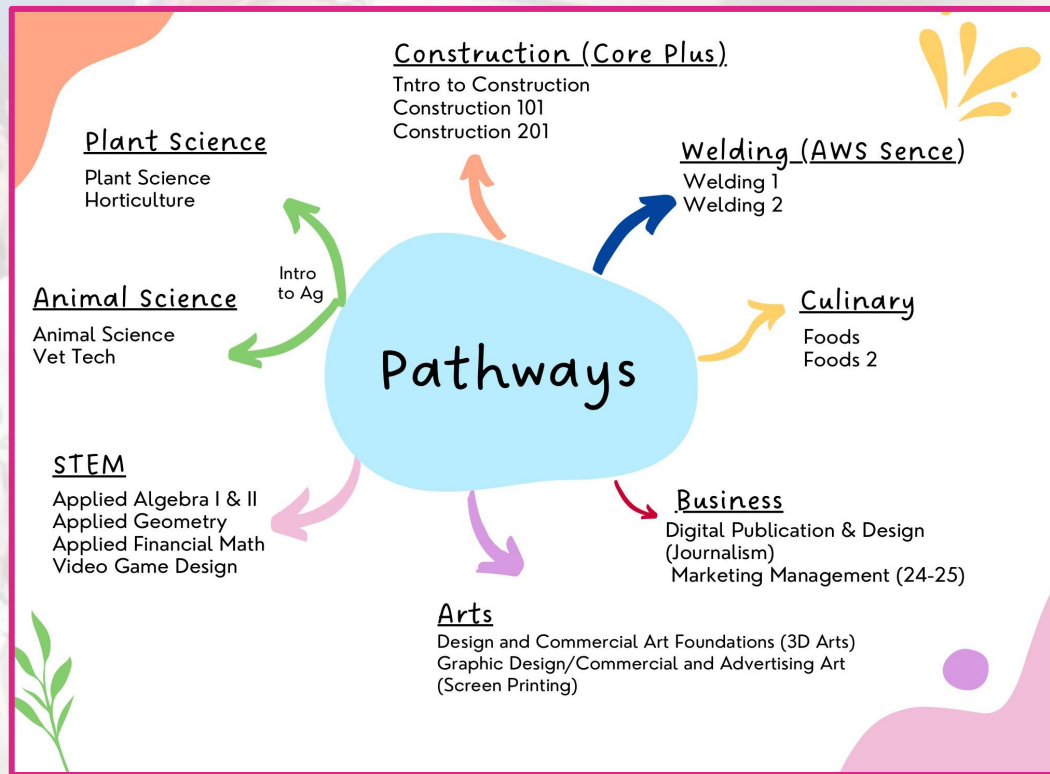


**WHAT ARE WE DOING AND WHAT DO WE NEED TO DO
DIFFERENTLY?**

CTE Pathways

- STUDENT Interest and Need
- Teachers

Zero to 8 in two years



Credit Completion Lab – Credit Retrieval



- Credit completion Lab- What is it?
- How does Standard Based Grading impact credit completion?
- Credit Retrieval what is it and what is the success rate?

Intervention

THE CHALLENGE- How to do intervention in a small high school

- Schedule
- Credits
- Intervention VS Core
- Teachers



Connection through Activities

White Swan High School SPORTS ELIGIBILITY REPORT



SPORT

Boys Basketball
28 Athletes

Girls Basketball
19 Athletes

Boys Wrestling
18 Athletes

Girls Wrestling
7 Athletes

Cheer
13 Athletes

TOTAL
85 Athletes

| | WEEK 1 | WEEK 2 | WEEK 3 | WEEK 4 | WEEK 5 | WEEK 6 | WEEK 7 | WEEK 8 |
|---------------------------------|--------|--------|--------|--------|--------|--------|--------|--------|
| Boys Basketball 28 Athletes | 100% | 86% | 96% | 96% | 96% | 100% | 96% | 96% |
| Girls Basketball 19 Athletes | 100% | 100% | 95% | 95% | 100% | 100% | 100% | 100% |
| Boys Wrestling 18 Athletes | 100% | 83% | 83% | 83% | 83% | 83% | 83% | 94% |
| Girls Wrestling 7 Athletes | 100% | 71% | 57% | 100% | 100% | 71% | 71% | 71% |
| Cheer 13 Athletes | 100% | 92% | 92% | 92% | 92% | 92% | 92% | 92% |
| TOTAL 85 Athletes | 100% | 87% | 89% | 94% | 94% | 93% | 92% | 94% |



Integration of Culture

- Traditional Weaving (Wa'paas)
- Multimedia Club
- Talking Circles
- Ichishkiin Culture Club





98%
of

LEARN MORE!



WHITE
SWAN ADULTS

**BELIEVE IT'S IMPORTANT TO
SPEND TIME SUPPORTING
OUR YOUNG PEOPLE
AS THEY DO THE THINGS THEY LOVE.**



www.whiteswancommunitycoalition.org

Washington State
Health Care Authority

MOST
7 out of 10

LEARN MORE!



WHITE
SWAN ADULTS

**SPEND QUALITY TIME
WITH OUR YOUNG PEOPLE.**



www.whiteswancommunitycoalition.org

Washington State
Health Care Authority

A group of students, primarily of Asian descent, are shown in traditional clothing. They are wearing headbands with floral patterns and long, flowing robes. The students are standing in a line, and the background is a plain, light-colored wall. The word "Share" is overlaid in a large, bold, pink font on the left side of the image.

Share

How did you see the CDC's four school connectedness interventions reflected in our work?

1. Family/community mentoring programs
2. Service-learning opportunities
3. Student-led clubs to provide safe spaces
4. Professional development for educators on classroom management



Thank you!



Questions?

Scan for Slide Deck



Contact Us

Jenny Tenney

Principal

jtenney@masd209.org

Julie Schillreff

Supervisor of School and Community Programs

jschillreff@masd209.org

Curt Guaglianone

Superintendent

cguaglianone@masd209.org

References

Centers for Disease Control and Prevention. (2009). School connectedness: Strategies for increasing protective factors among youth. Retrieved 31 May 2023 from <https://files.eric.ed.gov/fulltext/ED511993.pdf>

Center for Disease Control and Prevention. (2022). School connectedness. Retrieved 31 May 2023 from https://www.cdc.gov/healthyschools/school_connectedness.htm