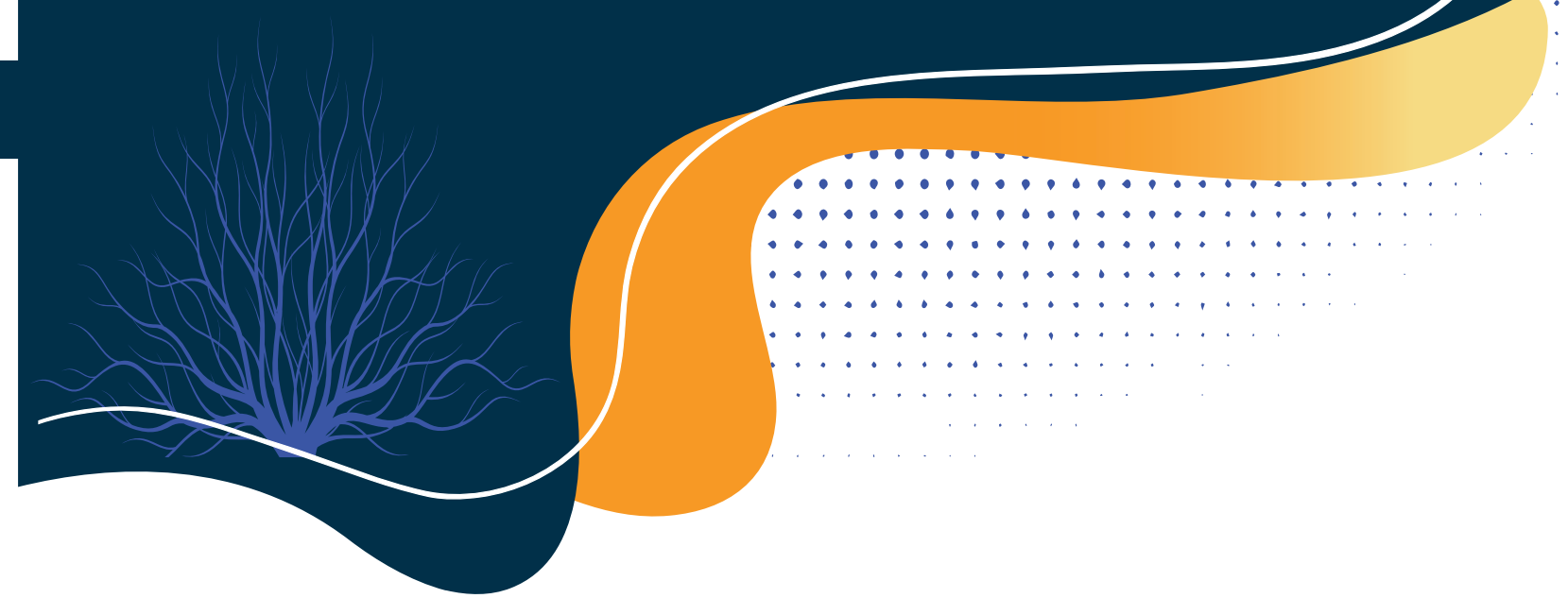


Tuesday | May 2, 2023

- 7:45–8:30 a.m. Breakfast
- 8:30–9:10 a.m. Opening: James Everett, WASA Superintendent Component Chair
Joel Aune, WASA Executive Director
- 9:10–10:10 a.m. Alyssa Gallagher
Optimizing Your Leadership for Greater Impact
Working in schools can be very demanding, continually balancing all the different needs of faculty, staff, students, parents, and the community. This highly interactive session will offer a rare opportunity to reflect and get clear on how you can optimize your leadership despite all the challenges educators face. At BTS Spark, we understand how leaders work and are developed. Our model is research-based and derives from our experience of coaching over 18,000 leaders who have developed the skills in themselves and in others. Join us as we reveal the four major domains of leadership, and the mindsets successful leaders have in those areas. We will talk about how great leaders actively work in the different domains to grow and develop as leaders through shifting their mindsets. And, as a leader, how this model can positively impact all members of the school community.
- 10:10–10:25 a.m. Break
- 10:25–11:25 a.m. Alyssa Gallagher
What Executive Coaching Can do for You!
WASA staff and Alyssa Gallagher, Head of BTS Spark, will share the WASA and BTS Spark partnership and how you can access executive coaching for you and your team at not-for-profit pricing. Alyssa will also share the most common Mind-traps that keep leaders from showing up as their best self and tools to overcome them.
- 11:25–11:30 a.m. Closing

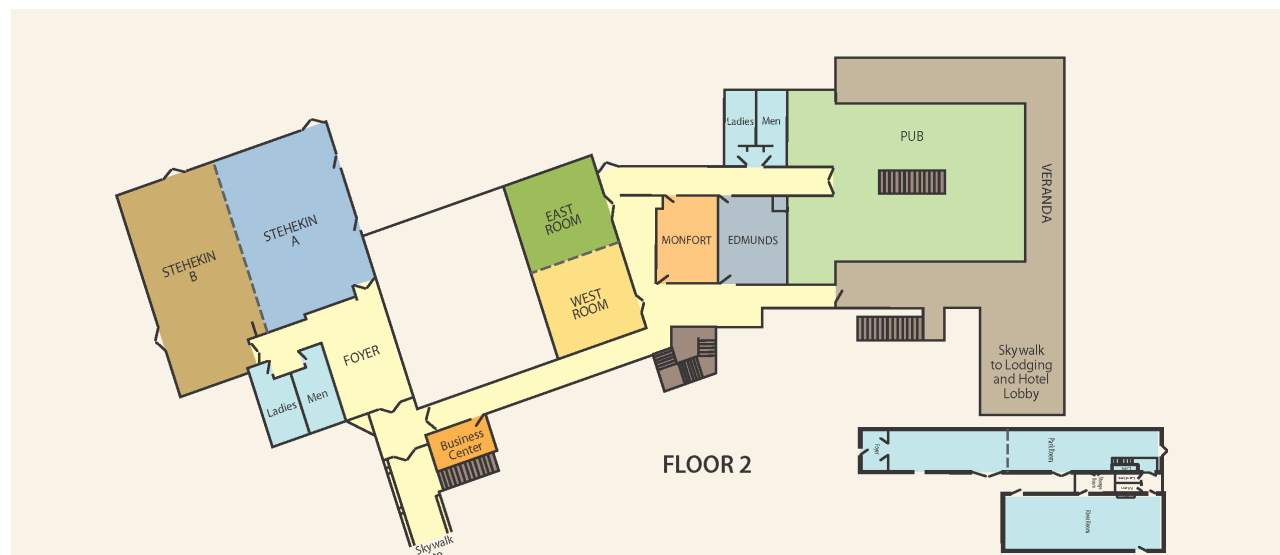


Superintendents Conference

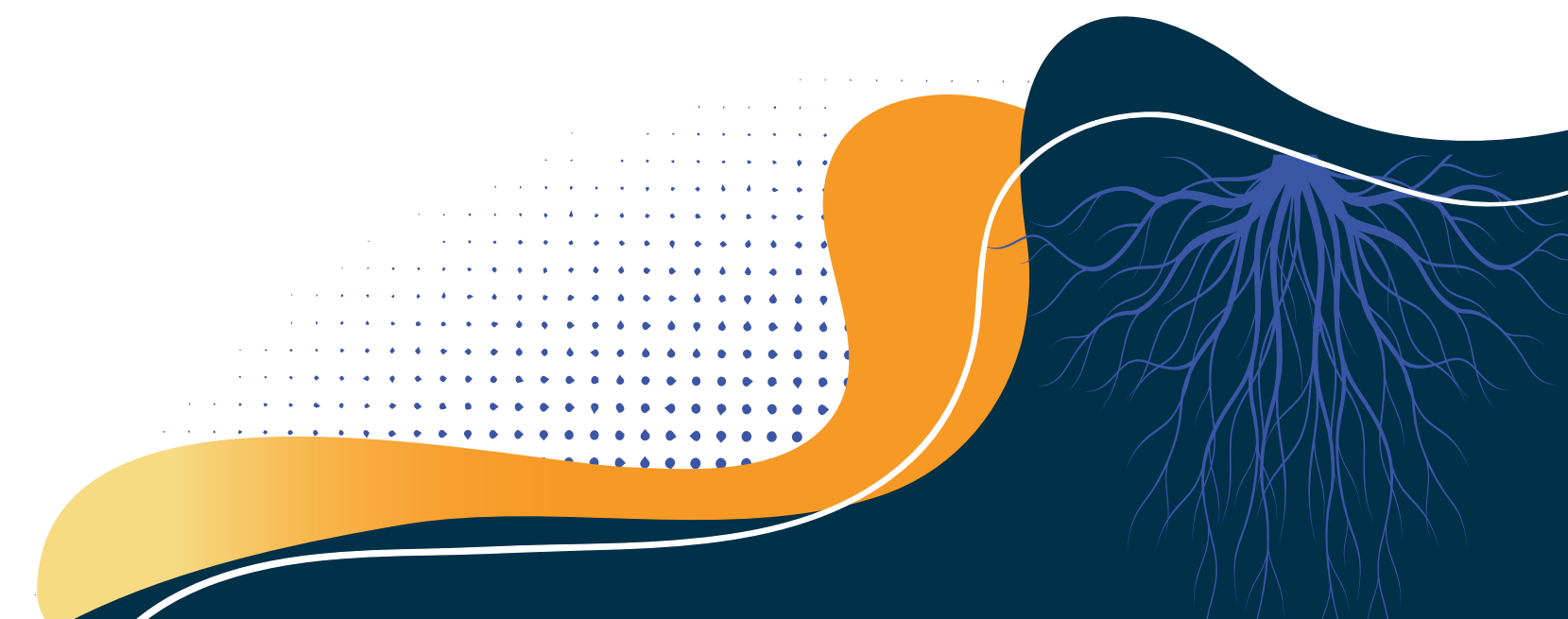
April 30–May 2
Lake Chelan

2023

Wifi password: Sunny2023!



Superintendent Conference 2024 | May 5 – 7
Campbell's Resort, Chelan, WA



Sunday | April 30, 2023

- 5:00–6:30 p.m. Reception | Music by Non-Vintage
- 6:30 p.m. Dinner
- 7:30 p.m. Kim Samuel Interview, Author of *On Belonging*
Kim is an activist, educator, and a leading voice in the global movement for belonging. She founded the Samuel Centre for Social Connectedness, which works with advocates and researchers to fight social isolation and build belonging around the world. She is a Visiting Research Fellow at Green Templeton college, Visiting Scholar at the Oxford Poverty and Human Development Initiative (OPHI), and the Fulbright Canada Ambassador for diversity and social connectedness. Kim is the author of *On Belonging: Finding Connection in an Age of Isolation*, an exploration of the crisis of social isolation and our birthright of Belonging.

Monday | May 1, 2023

- 6:00 a.m. Walk with WASA
- 7:45–8:30 a.m. Breakfast
- 8:30–9:00 a.m. Opening: James Everett, WASA Superintendent Component Chair
Success Criteria: Kim Fry
Celebrating Our Amazing Sponsors: Mike Nelson, WASA Assistant Executive Director
A WASA Welcome: Joel Aune, WASA Executive Director
- 9:00–10:15 a.m. Jimmy Casas, Author of *Recalibrate the Culture: Our Work, Our Why, Our Values*
Recalibrate the Culture
Do you leave work every night exhausted from putting out fires all day long? Are you frustrated because you find yourself dealing with the same issues time and time again? You are not alone. It is time to recalibrate. Recalibrate our why. Our work. Our values. Ourselves. Educators must explore their inner selves to understand the role we each play in how we can impact the climate and culture of an entire campus when we are strategic and aligned in our practices. The classroom, building, and district levels must see themselves as one and must be intentional in replicating their processes, protocols, and frameworks to recalibrate and bring about system-wide change and cultivate a healthier culture. Participants will leave this session with a renewed understanding of the importance of effective processes and practical tools they can utilize immediately to cultivate a healthier culture for all members of their school community.
- 10:15–10:30 a.m. Break
- 10:30–11:30 a.m. Concurrent Session 1

Stehekin A and B	West Room	East Room
Recalibrate the Culture, Part II Jimmy Casas In this breakout session, participants will take a deeper dive into Recalibrate the Culture with a renewed understanding of the importance of effective processes, frameworks, and practical tools you can utilize immediately to cultivate a healthier culture for your school community.	ChatGPT for School Administrators: Enhancing Efficiency, Equity, and Student Support Jeff Utecht Participants will discover how ChatGPT and other generative AI tools can assist with administrative tasks, such as scheduling, record-keeping, and communication. Gain a better understanding of how to use ChatGPT to streamline our work processes, support our students, and promote equity in education. (Oh...and learn how ChatGPT helped write this session title and description)	WASA PLC at Work Rob Roettger Superintendent, NEWESD 101 Panelists: Ben Ferney, Cheney Jason Perrins, Chewelah Kyle Rydell, West Valley Todd Spear, Mary Walker Brian Talbott, East Valley Bob Maxwell, Pullman Join a panel of superintendents from the NEWESD 101 region as they share their learning related to district-wide implementation of Professional Learning Communities. During this breakout session superintendents will share information about the impact of PLCs on their districts, what has been accomplished to date, the impact of the work on building leaders, how they have engaged Board Members in the process, and ways in which PLCS support district goals and a focus on equity.

Monday | May 1, 2023 (Continued)

- 11:30–11:40 a.m. Break and Moving to Ballroom
- 11:40 a.m.–12:00 p.m. Chris Reykdal, Superintendent, OSPI
- 12:00–1:00 p.m. Lunch
- 1:15–2:15 p.m. Concurrent Session II

Stehekin A and B	West Room	East Room
Superintendent Contracts: What's Happening Out There Andy Wolf Assistant Executive Director, WASA Tyler Firkins Attorney and Partner, Van Siclen Stocks Firkins Participants will explore current trends in superintendent contracts. Examples of problematic as well as recommended contract language will be shared. Resources for contract negotiations and maintenance will be provided.	Next Level Leaders Ashley Barker Coordinator, WASA/AWSP Next Level Leaders Mike Nelson Assistant Executive Director, Professional Learning Become a Next Level Leader! Come to this session and learn about the launch of Washington State's Premier Leadership Academy: Next Level Leaders (NLL). <ul style="list-style-type: none"> Washington State's Premier Leadership Development Academy dedicated to preparing leaders to conquer complex challenges through the development of a two-year learning community. Designed to focus on individual and system leadership behaviors and actions essential for success in our rapidly changing educational environment. Committed to assisting educational administrators to thrive in their role. 	What Women Wished You Knew! Insights for Increasing Female Leadership in Washington's Schools Kim Fry Assistant Executive Director, WASA James Everett Superintendent, Meridian Shane Backlund Assistant Superintendent, ESD 105 This session is for male and female superintendents who'd like to hear what Washington's current and aspiring women leaders say they need in order to flourish in our districts. We'll also use first-hand examples from current Washington superintendents to illustrate principles from Kate Eberle Walker's book, <i>The Good Boss: Nine Ways Every Manager Can Support Women at Work</i> .
2:15–2:30 p.m. Break		
2:30–3:15 p.m.	Federal Education Update: What Superintendents Need to Know! Tara Thomas, Policy Analyst, AASA	
3:15–3:30 p.m.	Q & A with Tara Thomas Moderated by Dan Steele, Assistant Executive Director, WASA	
3:30–3:55 p.m.	State Education Update: What Superintendents Need to Know! Dan Steele, Assistant Executive Director, WASA	
4:00 p.m.	Extended Break and Networking	
5:00 p.m.	Reception	
6:30 p.m.	Dinner Honoring Superintendent Mentors: Kim Fry Honoring of 2023 Superintendent Retirees: Joel Aune	