

WASA Incoming Superintendent Conference

Better Together ~ The AESD Network
A commitment to support local school districts

July 24, 2022



AESD ASSOCIATION OF
EDUCATIONAL
SERVICE DISTRICTS

Nine ESDs. One Network.
Supporting Washington's Schools and Communities.

The background of the slide features three vintage computer monitors arranged in a row, receding into the distance. Each monitor displays a large '@' symbol. The first monitor on the left has a pink '@' on a green screen. The middle monitor has a yellow '@' on a blue screen. The third monitor on the right has a blue '@' on a red screen. The entire scene is bathed in a blue light, and the monitors are sitting on a desk with keyboards and mouse pads visible in the foreground.

a bit of history...

Overview of Washington ESD's & AESD

■ History of Washington ESD's

- 1890 – Office of the County Superintendent was created by statute
- 1909 – County Boards of Education were created with duties in statute
- 1955 – County board membership changed to elected lay membership
- 1969 – Legislature passed Intermediate School District Act. State Board created 14 ISDs
- 1969 to 1977 – A decade of legislative actions resulted in going from 14 service areas to the present nine ESD's
- 1981 – Legislation passed to allow ESD's to provide direct services



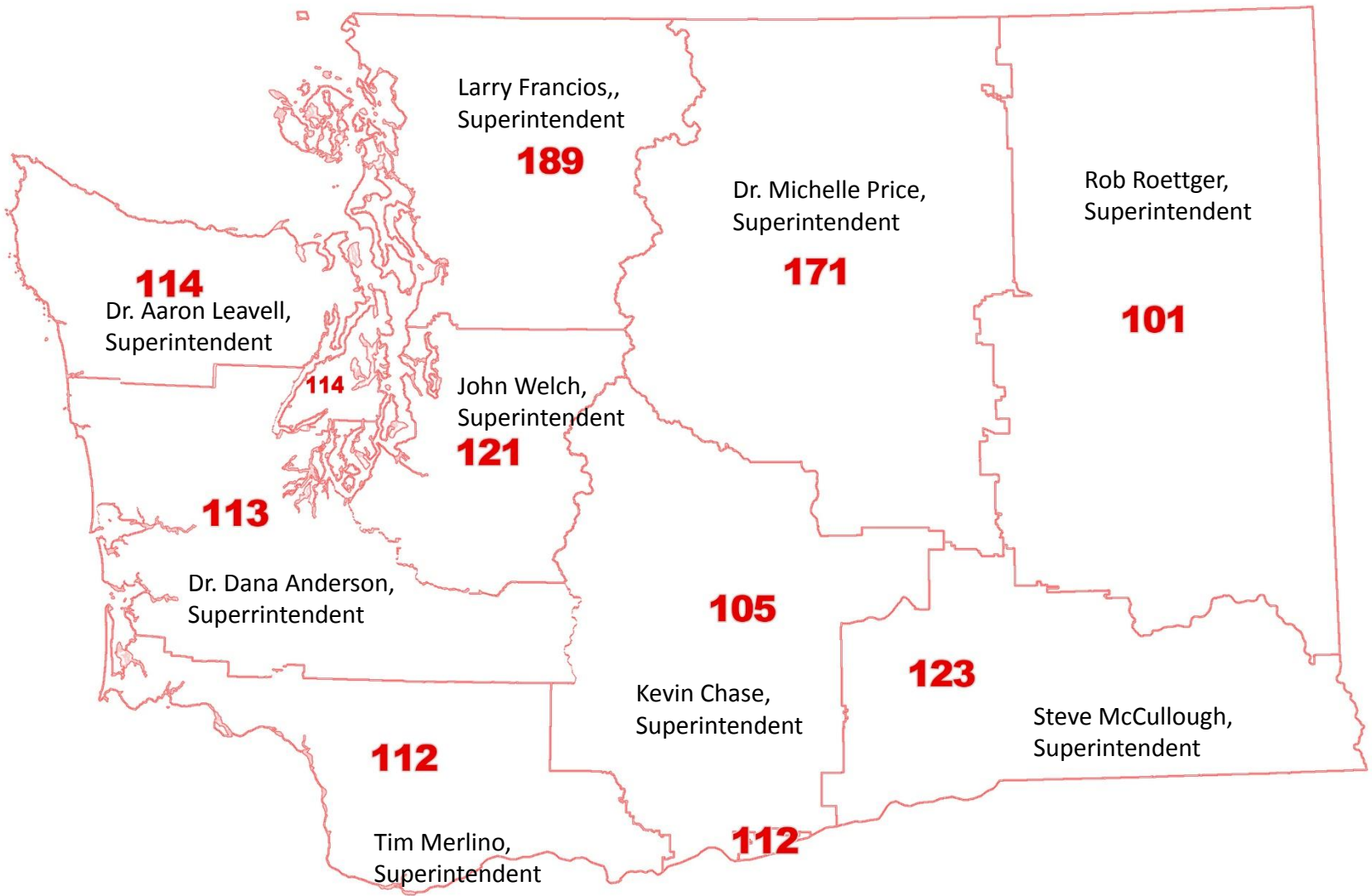
Summary

Washington's nine ESDs have evolved from a system that began as 39 individual county offices of education. A series of consolidations and name changes between 1969-1977 ultimately yielded a **statewide system of nine regional ESDs...**

■ Purpose of ESD's

- Considered a political sub-division of the state and statutorily designed to:
 - Provide cooperative and informational services to local school districts.
 - Assist the superintendent of public instruction and the state board of education in the performance of their respective constitutional duties.
 - Provide services and opportunities for all children to receive a quality, affordable educational





Adding economical value to Washington education

ESDs are funded by:

- 4-6% core allocation through apportionment
 - State and Federal grants
 - Legislative bills & partnerships
 - Cooperatives
 - Fee for service contracts
-

Governance at Individual ESDs

- Each ESD is governed by a Board of Directors, elected by school board members of the school districts in the ESD region, to four-year terms.
- Each ESD has a Superintendents' Advisory Council that approves the annual budget and makes recommendations for ESD service and support
- Each ESD Cooperative is governed by an Advisory Council made up of Superintendents in the region

(RCW 28A.310.430)

■ AESD Board Leadership & Governance



- Nine Member Executive Board comprised of one member from each of the nine ESD's
- President, Vice President, Past President
- Operates with a constitution and bylaws
- ESD superintendents serve as non-voting and advisory board members
- AESD Executive board meets five times a year including an annual conference
- Annual meeting at conference includes budget adoption & election of officers

Leadership for Equity, Opportunity, and Results

Examples of some services provided by ESDs

- ❑ Teacher and staff professional development
- ❑ School system and student learning support
- ❑ Operations, fiscal, and technical services
- ❑ Administrative services
- ❑ Grant acquisition and grants management
- ❑ Technology and computer education training
- ❑ Communications and planning support
- ❑ Early learning coordination and facilities support
- ❑ Career Connected Learning
- ❑ Student Safety & Well-Being
- ❑ School construction services
- ❑ Special education coordination
- ❑ Accreditation services

A chalkboard with several colorful chalk sticks (yellow, purple, pink, orange) scattered on the left side. On the right side, there are orange chalk markings, including a large 'X' and some scribbles. The text is overlaid on the right side of the chalkboard.

**and all other
value-added services
and support to local
requested by local
districts and other
state educational
partners.**

The OSPI/AESD Network

better together...

the OSPI/AESD network is:

A commitment to support local school districts

What is the OSPI/AESD Network?

It is a partnership for an aligned system (Coordinated Services Agreement) between OSPI and the Association of Educational Service Districts to:

“provide a coherent and equitable system of teacher and administrator professional learning that results in continuous learning for every student, every day, and in every classroom.”

AESD Network

Mission

To ensure equity and excellence in education through effective services delivered statewide.

Vision

To inspire and foster equity, opportunity, and results through meaningful support of all school districts.



AESD ASSOCIATION OF
EDUCATIONAL
SERVICE DISTRICTS

Nine ESDs. One Network.
Supporting Washington's Schools and Communities.

Our Values



The four OSPI/AESD statewide aligned initiatives are:

□ Mathematics

□ Science

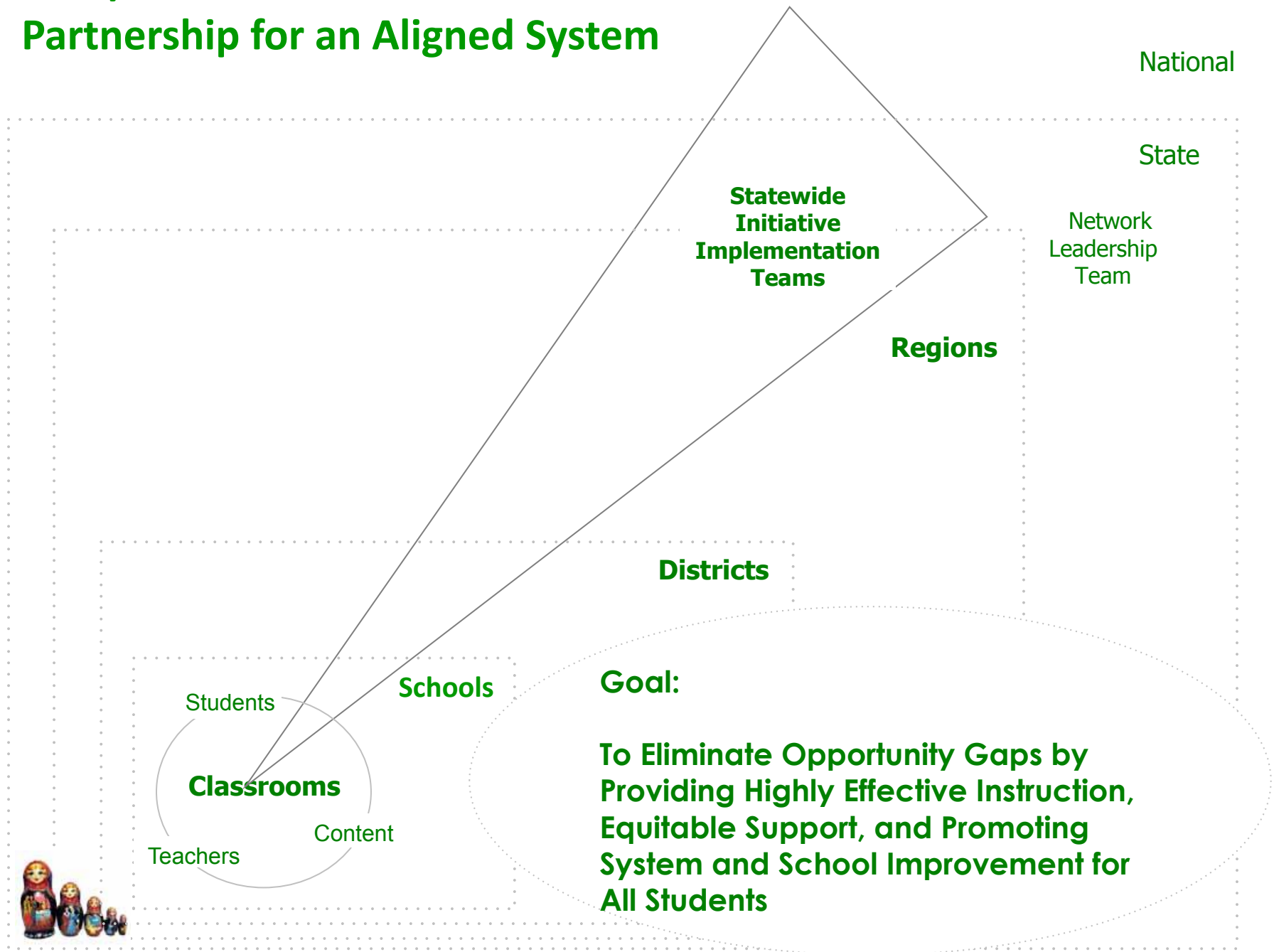
□ English Language Arts

□ Early Learning

Other OSPI/AESD Network Initiatives Include:

- Student Support
- Data Quality & Coaching
- Teacher & Principal Evaluation/Practice (TPEP)
- Student and School Success
- Special Education
- Migrant and Bilingual Education
- Career Connected Learning
- Educational technology

OSPI/AESD Statewide Network: Partnership for an Aligned System



OSPI/AESD Network is committed to support:

- Increased student achievement; effective professional practice; key initiatives related equity, opportunity, and results.
- *All* school districts, large and small, with a focus on equity of educational opportunities for *all* students across the state





AESD Association of
Educational
Service Districts

Today, tomorrow, together =
teamwork



Nine ESDs. One Network.
Supporting Washington's Schools and Communities.