

# Literacy Instruction in MTSS: Connecting Dyslexia Legislation and MTSS

Dr. Alicia Roberts Frank, Regional Administrator for Special Programs  
Dyslexia Specialist  
Capital Region ESD 113

Rebecca Estock, M.S, MTSS Implementation Supervisor  
Dyslexia Specialist  
OSPI



Washington Office of Superintendent of  
**PUBLIC INSTRUCTION**





## Vision

*All students prepared for post-secondary pathways, careers, and civic engagement.*

## Mission

Transform K–12 education to a system that is centered on closing opportunity gaps and is characterized by high expectations for all students and educators. We achieve this by developing equity-based policies and supports that empower educators, families, and communities.

## Values

- Ensuring Equity
- Collaboration and Service
- Achieving Excellence through Continuous Improvement
- Focus on the Whole Child



Washington Office of Superintendent of  
**PUBLIC INSTRUCTION**

# Equity Statement

Each student, family, and community possesses strengths and cultural knowledge that benefits their peers, educators, and schools.

Ensuring educational equity:

- Goes beyond equality; it requires education leaders to examine the ways current policies and practices result in disparate outcomes for our students of color, students living in poverty, students receiving special education and English Learner services, students who identify as LGBTQ+, and highly mobile student populations.
- Requires education leaders to develop an understanding of historical contexts; engage students, families, and community representatives as partners in decision-making; and actively dismantle systemic barriers, replacing them with policies and practices that ensure all students have access to the instruction and support they need to succeed in our schools.



Washington Office of Superintendent of  
**PUBLIC INSTRUCTION**



I would like to acknowledge the Indigenous people who have stewarded this land since time immemorial and who still inhabit the area today,



Acknowledgment is but a first step.  
It does not stand in for relationship and  
action, but can begin to point toward  
deeper possibilities for decolonizing  
relationships with people and place.



# Recommendations

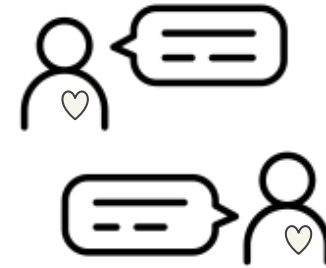


Stay engaged



Created by Eucalyp

Listen & Share Openly



Recognize  
Perspectives



Expect/ accept  
non-closure



Use tech to enhance  
learning



Give yourselves and  
each other grace



Center for  
Ethical Leadership

Icons from [thenounproject.com](http://thenounproject.com)



# Agenda/Goals

- ❑ Introductions & Framework
- ❑ Legal Requirements
- ❑ Implications for Educational Teams
- ❑ Interventions & Supports
- ❑ Q&A



Washington Office of Superintendent of  
**PUBLIC INSTRUCTION**





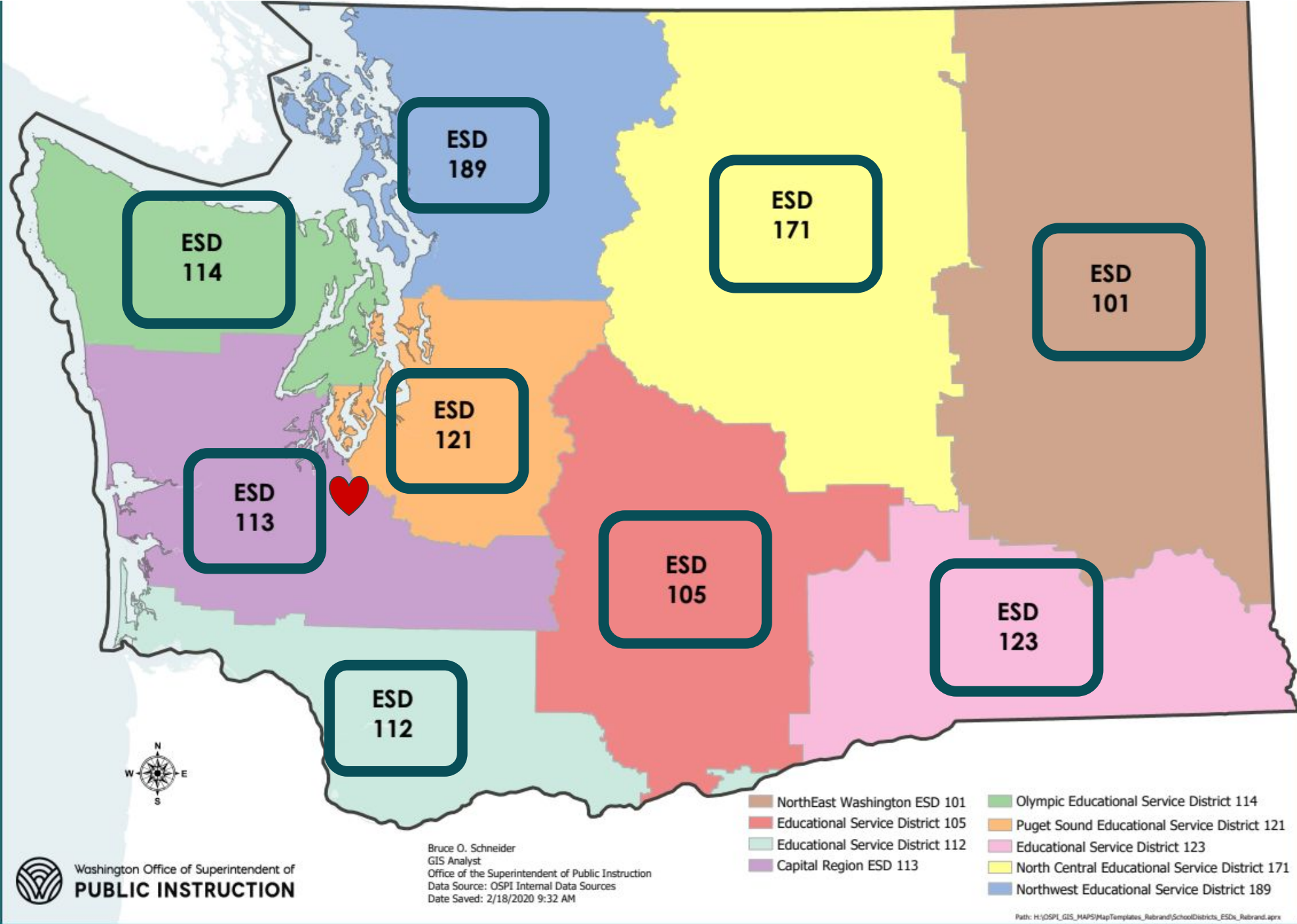
# Introductions and Framework



# Where is home?



Stand when your ESD is named.



# Introductions

Rebecca Estock

- BA Elementary Education
- M.S. Curriculum & Instruction
- Certified school administrator
- National Board Certified:  
Exceptional Needs
- Certified Dyslexia Specialist

Alicia Roberts Frank

- BS Secondary Education/English
- MATESOL
- ED.D Learning & Instruction
- 21 years experience as a special educator
  - Elementary
  - Middle
  - High
  - Teacher Preparation
  - Professional Development

# Our Partners

**Annie Pennell, MEd**, Learning Assistance Program Supervisor

**Denise Davis**, Executive Director of Elementary Education Content

**Dr. Heidi Aijala**, Associate Director Secondary ELA

**Carey Kirkwood**, Associate Director Elementary ELA

**Dr. Kristin Percy Calaff**, Director of Multilingual Education

**Dr. Tania May**, Assistant Superintendent, Special Education

**Dr. Liz Stewart**, SPED Program Improvement Supervisor



# Framework


## Systems and Structures

Schedules, Personnel Management, Screening, Data Collection & Meetings, Diagnostic Protocols, Progress Monitoring, etc.



## Instruction and Curriculum

Instruction Routines, Differentiated Instruction, 5 Components of Literacy, Systematic & Explicit Evidence Based Curriculum, Specific Interventions



Tiered System for Teaching Literacy to ALL students



Washington Office of Superintendent of  
**PUBLIC INSTRUCTION**



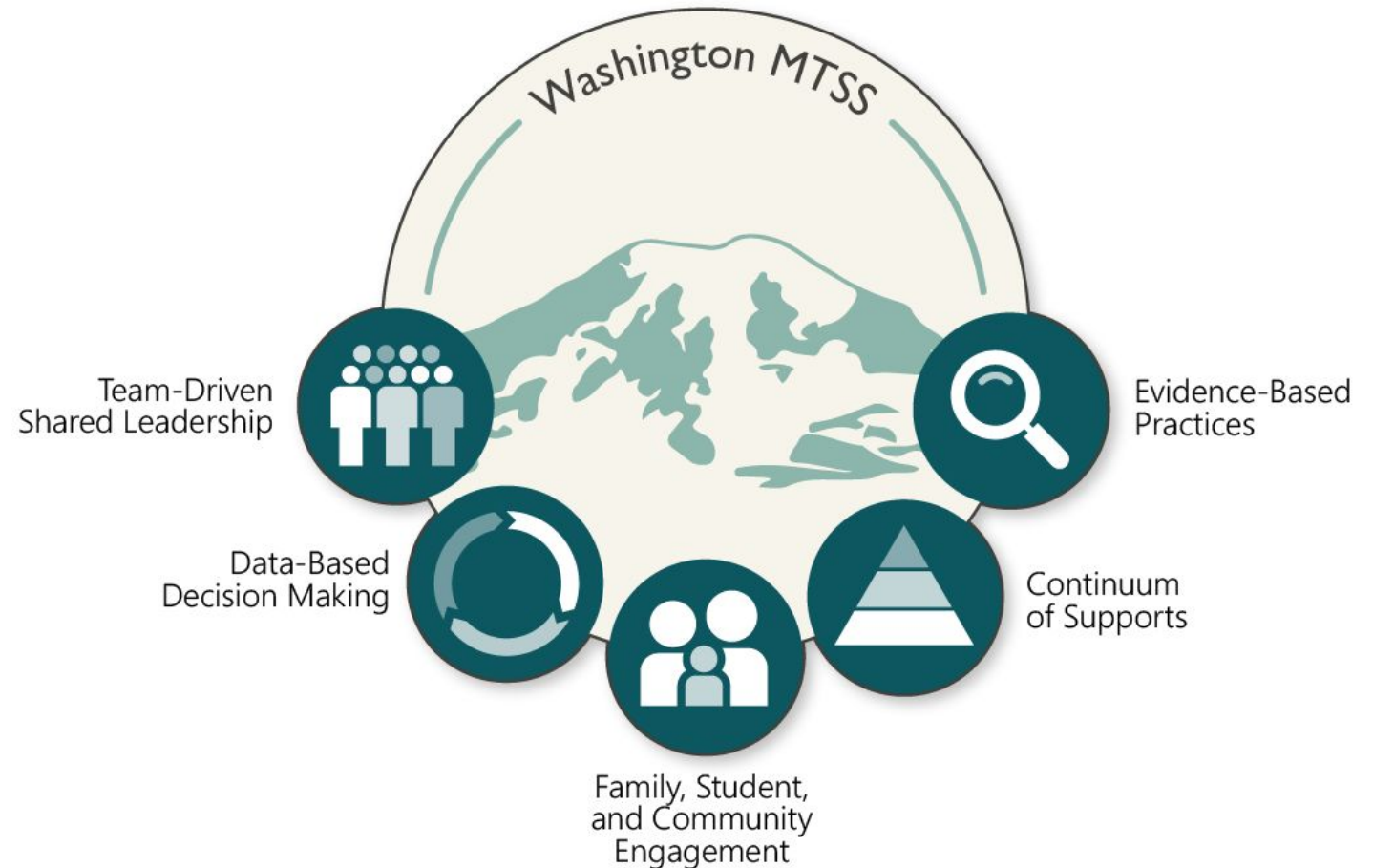
Capital Region  
**ESD 113**

# Multi-Tiered System of Supports

The Washington MTSS Framework is an evidence-based organizational approach for districts and schools to create equitable, consistent, and flexible systems and supports that empower educators, students, families, and communities to ensure benefit for every student.

**Learn More:**

<https://www.k12.wa.us/mtss>

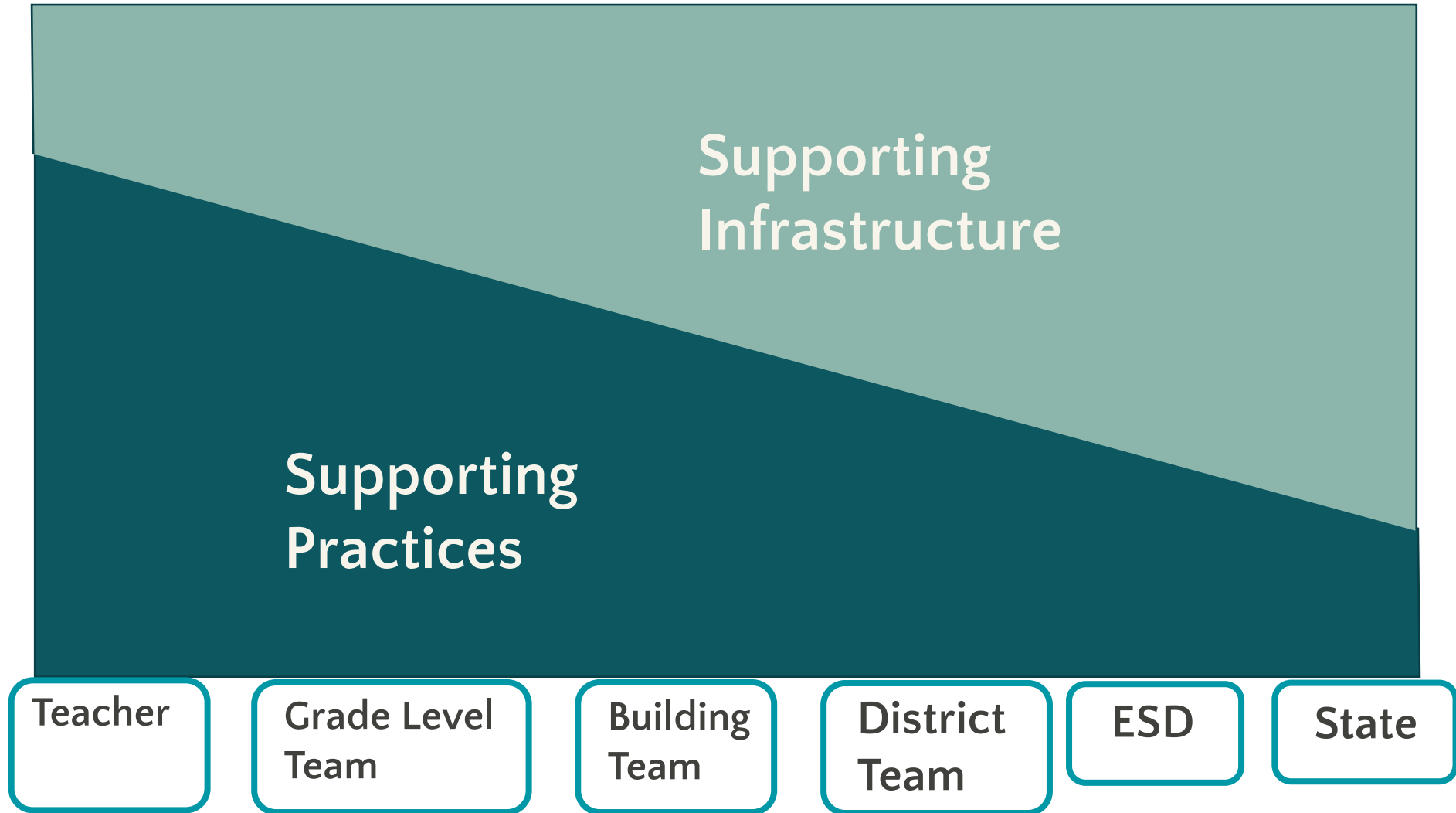


Washington Office of Superintendent of  
**PUBLIC INSTRUCTION**





Contextual Focus



Unit of Implementation

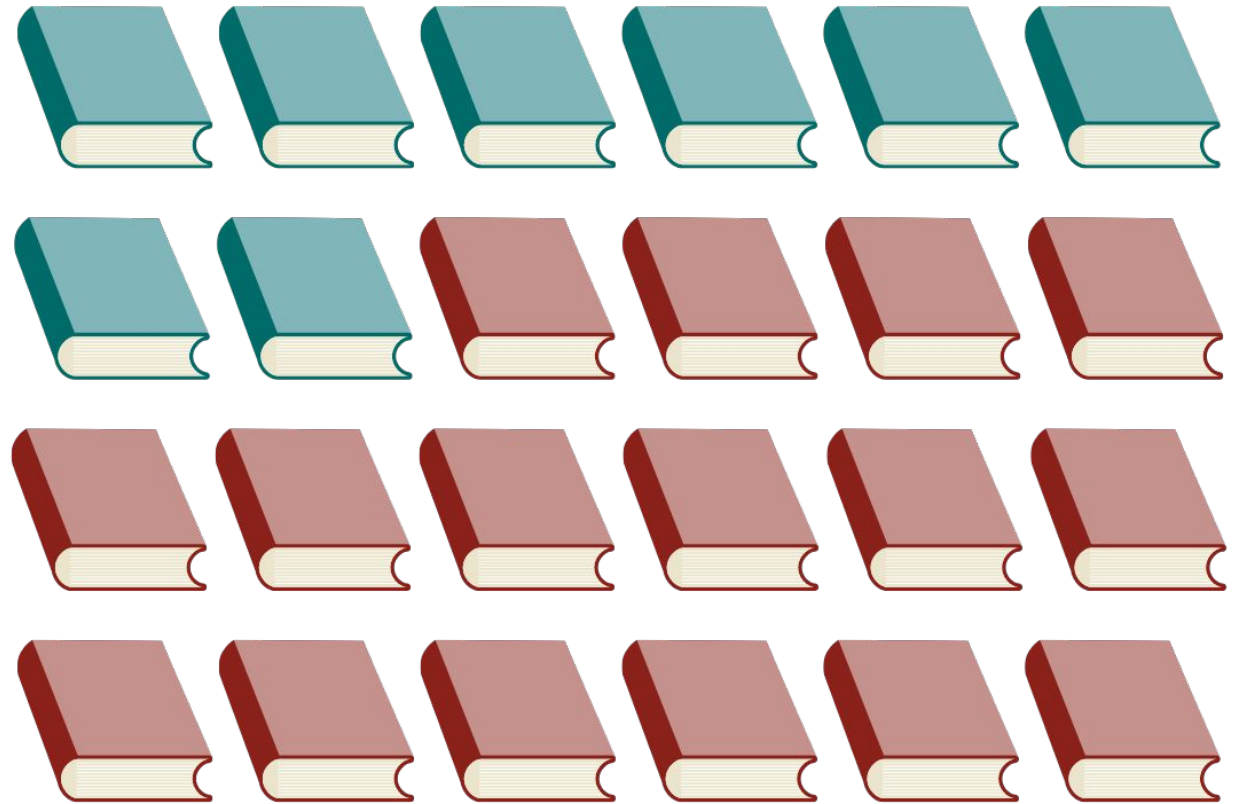


Washington Office of Superintendent of  
**PUBLIC INSTRUCTION**

Source: Steve Goodman

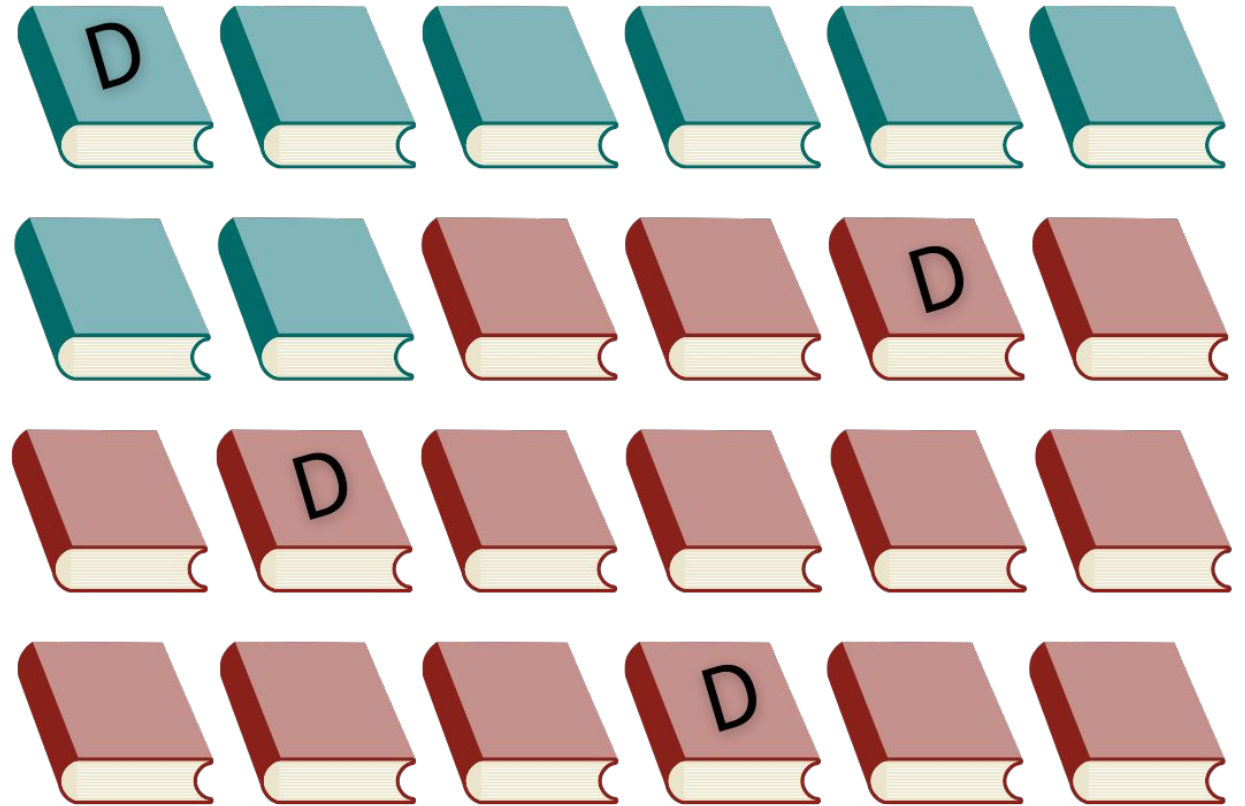
# Why Dyslexia?

- In Washington, **65%** of 4th grade students read at or below the basic level.
- Students *below basic* struggle to:
  - Find information
  - Make inferences
  - Identify details
  - Interpret meanings



# Why Dyslexia?

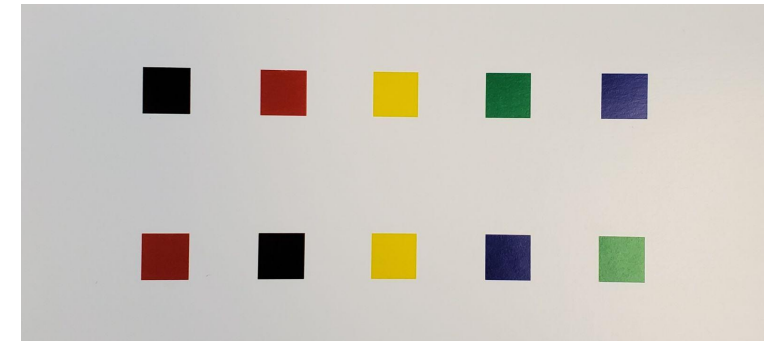
- Up to **20%** of the population may have symptoms of dyslexia
- Students with dyslexia are more likely to read below basic
- Some students with dyslexia may read at or above basic\*



# Why Dyslexia?

Skills that indicate weaknesses of or indicators of dyslexia are those that ALL students need to learn to read and write:

- Phonological Awareness
- Phonemic Awareness
- Letter Sound Knowledge
- Rapid Automatized Naming (RAN)



# Prevention Paradigm



“Adults are advised to undergo screening for high cholesterol levels, which can indicate an increased risk of developing heart disease. Patients diagnosed with high cholesterol **do not automatically receive a diagnosis of heart disease.** They are, however, provided with **an evidence-based “response to screening,”** generally a combination of prescribed exercise, dietary changes, and/or medication. This may prevent the development of the disease, or at least lessen its severity. **The goal is to reduce the prevalence** of heart disease, by encouraging individuals to take preventative action, **and to improve the outcomes of those who will develop it** by prompting them to implement lifestyle changes earlier, prior to a diagnosis.” (Gaab, 2019)



Washington Office of Superintendent of  
**PUBLIC INSTRUCTION**  
Implementing Early Screening of  
Dyslexia

From Jan Hasbrouck's Conquering Dyslexia







Washington Office of Superintendent of  
**PUBLIC INSTRUCTION**  
Implementing Early Screening of  
Dyslexia

National Center on Improving Literacy, 2009



# What is your why?

Turn & talk to your neighbor:

- What did that video make you think about?
- What connections did you make to students you know?
- Were any of your assumptions challenged?



Washington Office of Superintendent of  
**PUBLIC INSTRUCTION**  
Implementing Early Screening of  
Dyslexia





# Legal Requirements

# E2SSB 6162 Statute



- Definition of Dyslexia
- Requirements for School Districts
  - Skills to Be Screened
- Requirements for the Dyslexia Advisory Council
- Requirements for OSPI with the Dyslexia Advisory Council





# Definition

Dyslexia is a specific learning disorder that is neurological in origin and that is characterized by unexpected difficulties with accurate or fluent word recognition and by poor spelling and decoding abilities that are not consistent with the person's intelligence, motivation, and sensory capabilities. These difficulties typically result from a deficit in the phonological components of language that is often unexpected in relation to other cognitive abilities. Secondary consequences may include problems in reading comprehension and reduced reading experience that can impede growth of vocabulary and background knowledge. ([E2SSB 6162](#))



# Law

In accordance with RCW 28A.320.260, each school district must use a Multi-Tiered System of Supports (MTSS) to:

- **Screen:** Screen students in grades K-2 for indications of below-grade level literacy development, including indications of, or areas of weakness associated with dyslexia.
- **Intervene:** Provide evidence-based multisensory structured literacy interventions to students in grades K-2 who display indications of below-grade level literacy development, including indications of, or areas of weakness associated with dyslexia.
- **Communicate:** For students who show indications of, or areas of weakness associated with, dyslexia, districts must notify the student's family and caregivers of the identified indicators from the literacy screening results and intervention plan and regularly update them on the student's progress throughout the year.



# Intent

## Why

- Focus on K–2 literacy development
- The earlier the better for intervention

## What

- Foundational literacy skills

## How

- Identify & meet students' needs



# Pause to Reflect: Legal Requirements

Notice

Wonder



Washington Office of Superintendent of  
**PUBLIC INSTRUCTION**





# Implications for Educational Teams



# Data-Based Decisions

## Fidelity Data

- Are we implementing as intended?

## Perception Data

- What are students, families, staff experiencing?

## Student Data

- What is the benefit to students?
- What are the needs of students?





# Special Education

Receipt of additional support and supplemental services does not remove the requirement for screening of each student; individual assessment adaptations may only be made by an IEP team.

If after receiving interventions, further screening tools and resources indicate that the student continues to display areas of weakness associated with dyslexia, the school district\* **must** recommend to the student's family and caregivers that the student be evaluated for a specific learning disability, such as dyslexia.\*\*





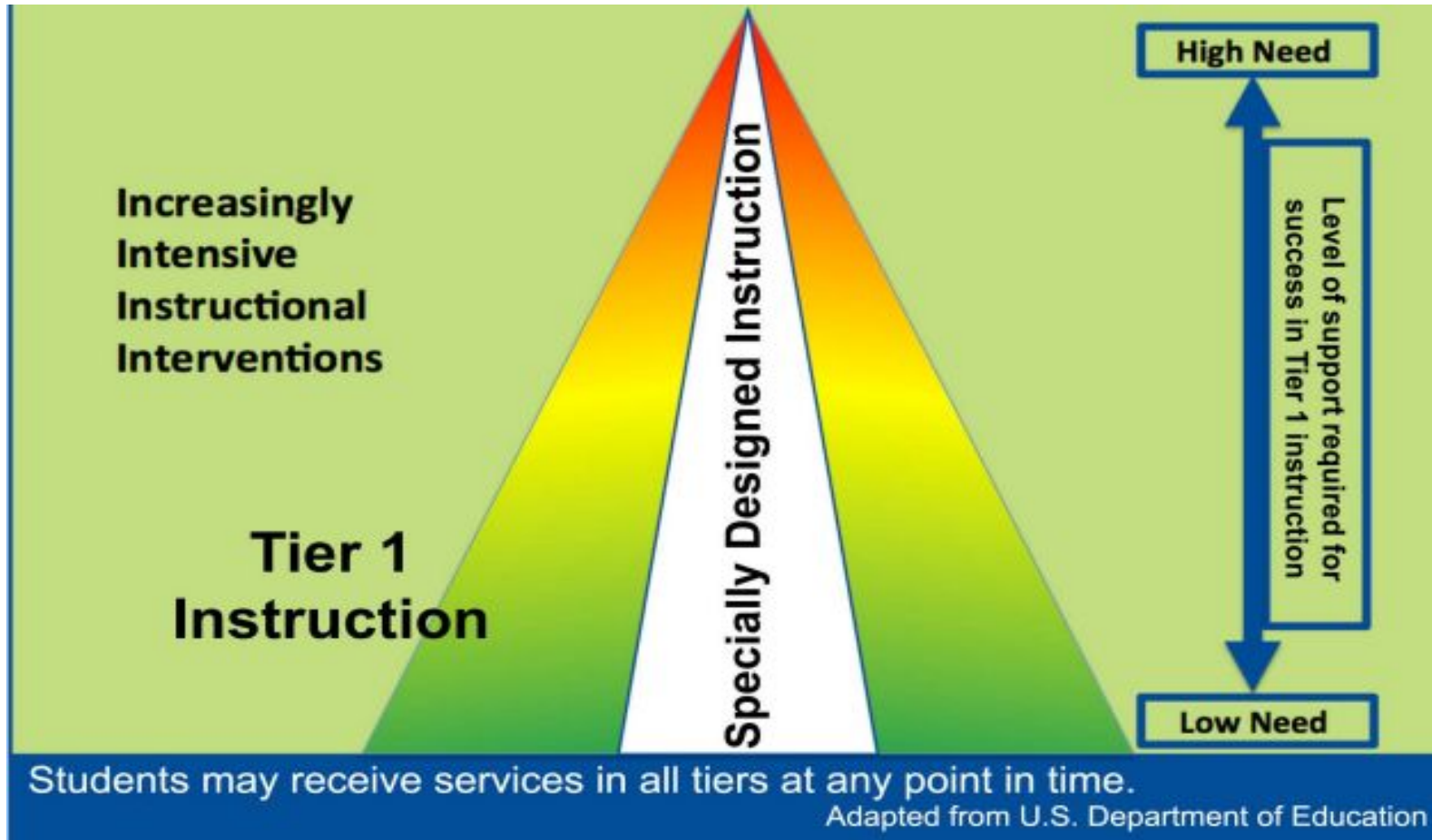
# Communicate

## **NOTE:**

E2SSB 6162 does NOT require that schools screen FOR dyslexia. It requires that schools screen for “indications of, or areas of weakness associated with, dyslexia”. It is important to say this, as only personnel licensed to make such identifications can do so; school screening tools do not do this.

As the school district screens students, our goal is to identify students who need particular interventions and provide them early to avoid a gap in learning.

# Specially Designed Instruction



# Pause to Reflect: Implications

Notice

Wonder



Washington Office of Superintendent of  
**PUBLIC INSTRUCTION**



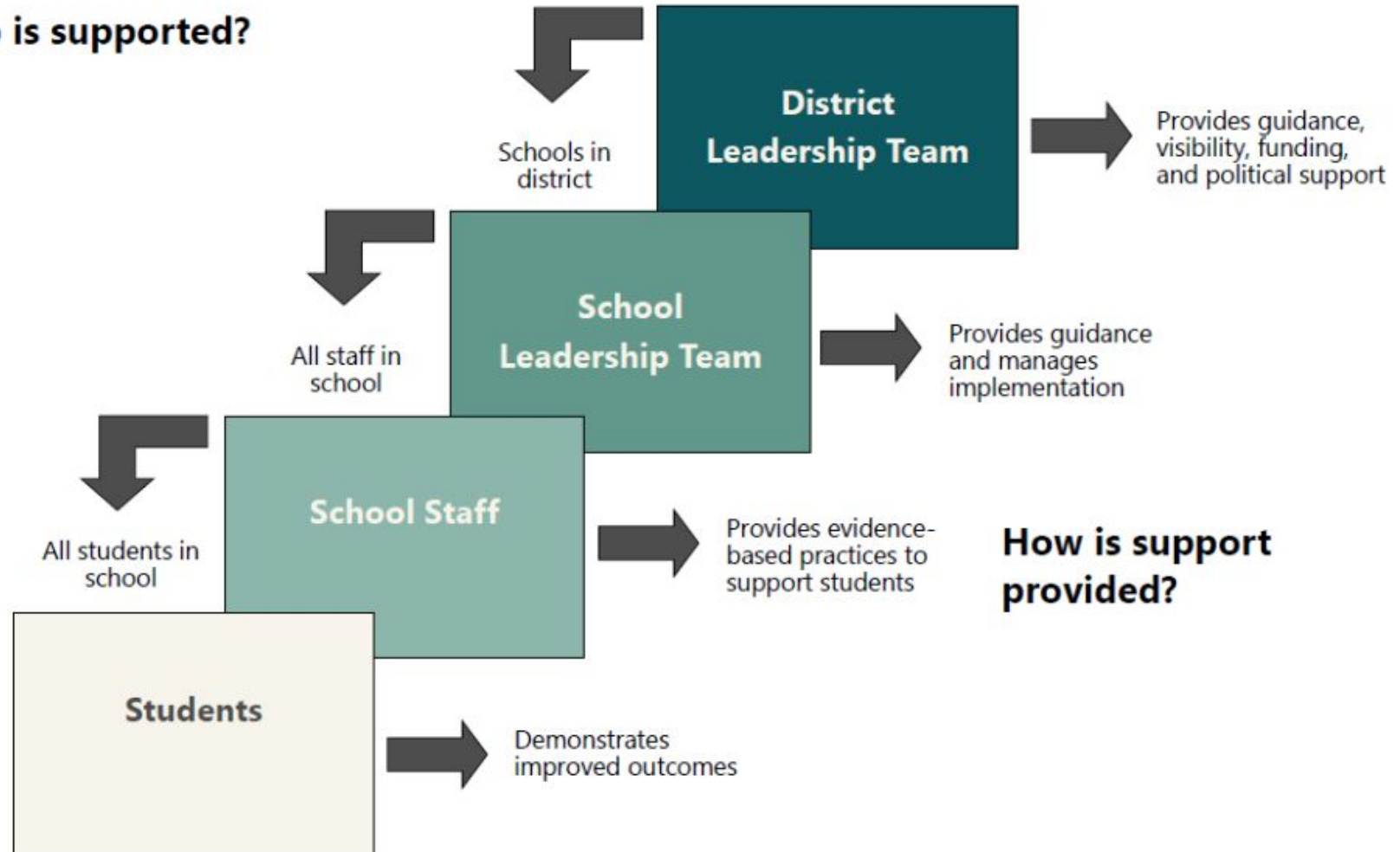


# Interventions & Supports



# Cascading Supports

**Who is supported?**





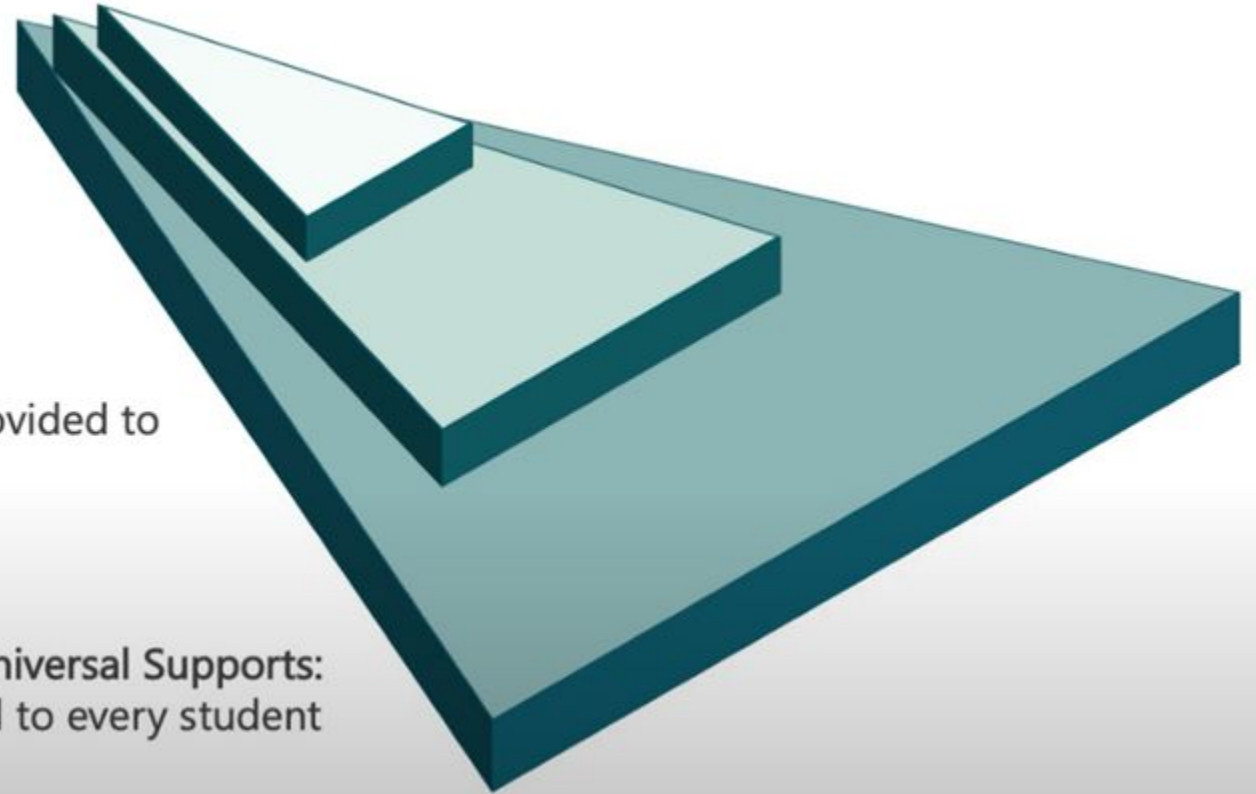
# Continuum of Supports



**Tier 3/Intensive Supports:**  
Supplementary support  
provided to a few students

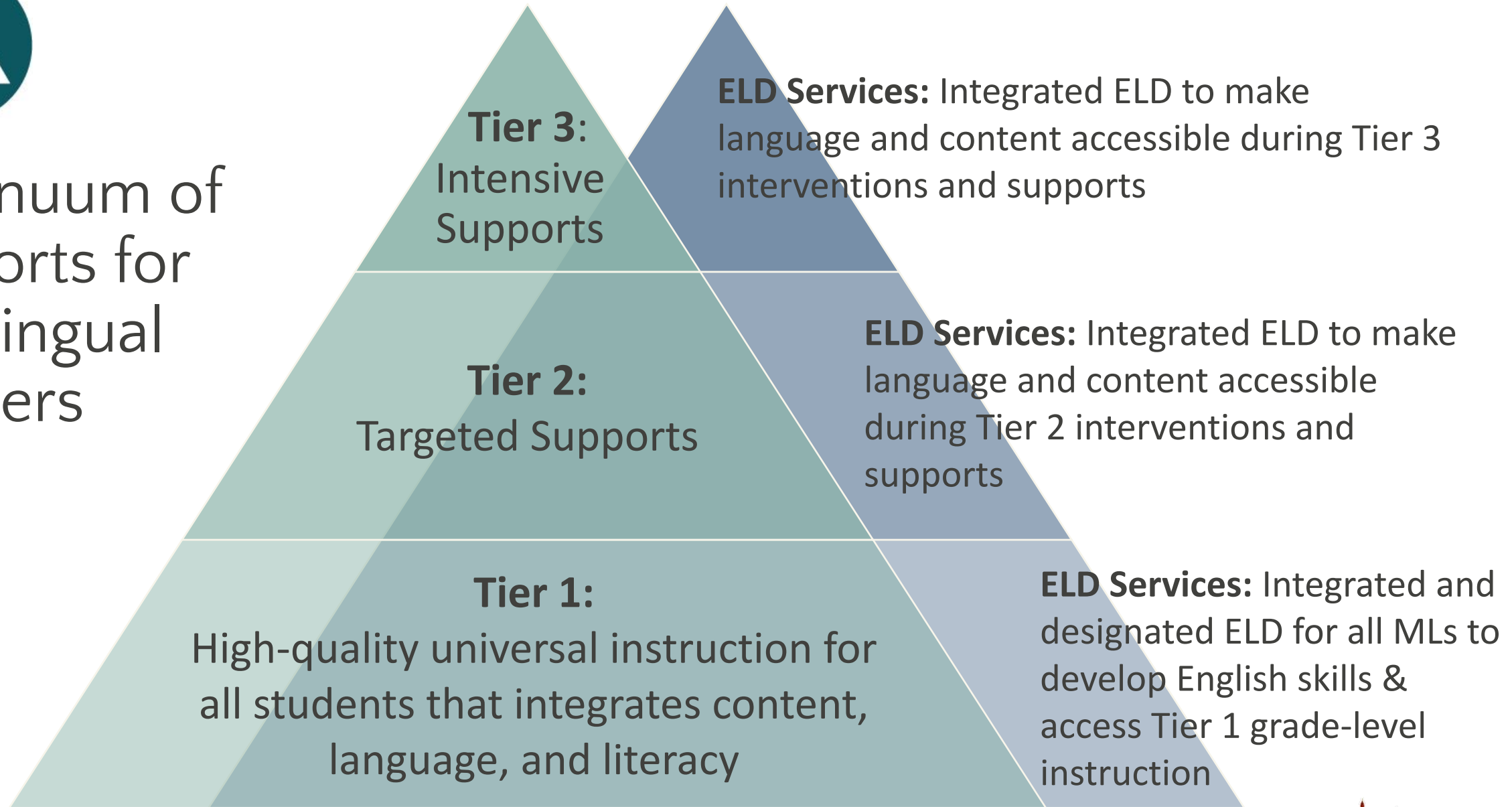
**Tier 2/Targeted Supports:**  
Supplementary support provided to  
some students

**Tier 1/Universal Supports:**  
Provided to every student





# Continuum of Supports for Multilingual Learners





Washington Office of Superintendent of  
**PUBLIC INSTRUCTION**



# Supports for Individual Students



**Strengths**



**Struggles**



**Assistive  
Tech**

Immersive Reader

Bookshare,  
Onenote

Easy Spelling Aid

Google Docs  
Speech to text



**Accommodations**

Audio books

Text to speech

Extra time

Clarify directions

Teacher support



Washington Office of Superintendent of  
**PUBLIC INSTRUCTION**



Capital Region  
**ESD 113**

# Pause to Reflect: Interventions & Supports

Notice

Wonder







# Questions & Reflections

# Contact Information

- Alicia Roberts Frank, Ed.D
  - 360-464-6843  
[arobertsfrank@esd113.org](mailto:arobertsfrank@esd113.org)

- General questions
  - [dyslexia@k12.wa.us](mailto:dyslexia@k12.wa.us)

- Rebecca Estock, NBCT
  - 360-972-5258  
[rebecca.estock@k12.wa.us](mailto:rebecca.estock@k12.wa.us)

- Resources
  - <https://tinyurl.com/OSPIAboutDyslexia>
  - <https://tinyurl.com/WAStructuredLiteracyOverview>





Washington Office of Superintendent of  
**PUBLIC INSTRUCTION**

*Connect with us!*



[k12.wa.us](https://k12.wa.us)



[facebook.com/waospi](https://facebook.com/waospi)



[twitter.com/waospi](https://twitter.com/waospi)



[youtube.com/waospi](https://youtube.com/waospi)



[medium.com/waospi](https://medium.com/waospi)



[linkedin.com/company/waospi](https://linkedin.com/company/waospi)