

Leading for Improved Outcomes

Glenna Wright-Gallo

Assistant Secretary
Office of Special Education and Rehabilitative Services



Growing Into the Role of a Leader

What defines you as a leader?

What background experience is supporting this experience?

What is creating barriers?



Raise the Bar: Lead the World

ACHIEVE ACADEMIC EXCELLENCE

- Accelerate learning for every student
- Deliver a comprehensive and rigorous education for every student

BOLDLY IMPROVE LEARNING CONDITIONS

- Eliminate the educator shortage for every school
- Invest in every student's mental health and well being

CREATE PATHWAYS FOR GLOBAL ENGAGEMENT

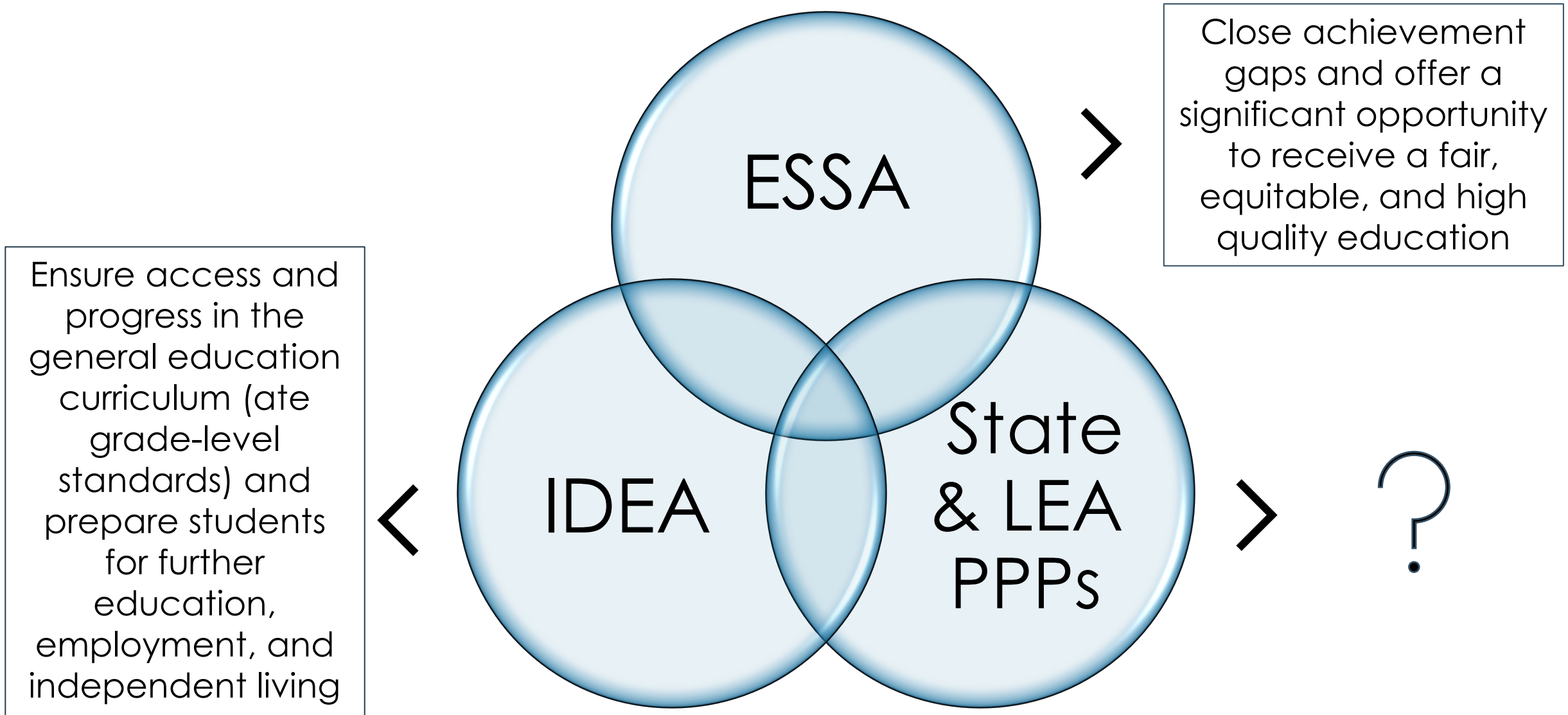
- Ensure every student has a pathway to college and a career
- Provide every student with a pathway to multilingualism

Changes in Federal & State Policy

- ▶ General education reform efforts are shifting to outcomes and raising achievement (e.g., ESSA State Plan, graduation requirements, dual enrollment, dual language)
- ▶ Special education reform efforts frequently remain based on inputs (e.g., money, staffing), and although included throughout federal and state efforts, continue to be focused primarily on compliance

Why do you think this happens?
What perpetuates it?

Find the Opportunity



OSERS Priorities and Activities

INSTRUCTIONAL LEADERSHIP FOCUSED ON LEARNING

RECALIBRATED INVESTMENTS

PREPARED WORKFORCE

Remedy immediate staffing shortages and effectively deploy diverse and equipped educators, providers, and support personnel

EVIDENCE-BASED INSTRUCTION

Amplify, promote, and actively drive instruction, intervention, and support

ACCESSIBLE TECHNOLOGY

Accelerate usage of inclusive technology for in-person and remote learning and employment

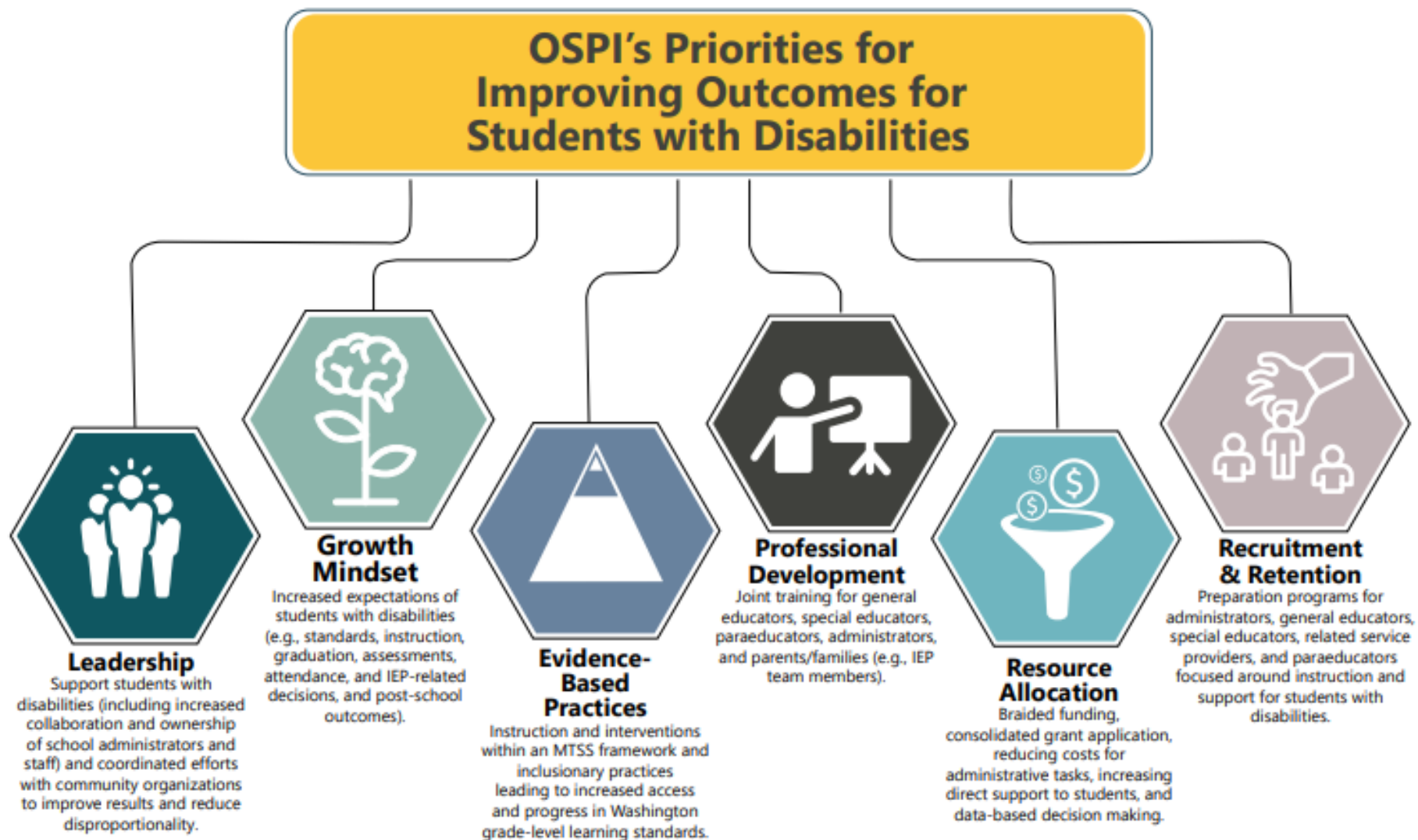
RESOURCE STRATEGY

Invest in coordinated activities leading to improved learning outcomes and Competitive Integrated Employment (CIE)

OSPI Strategic Plan & Priorities

Strategic Plan:

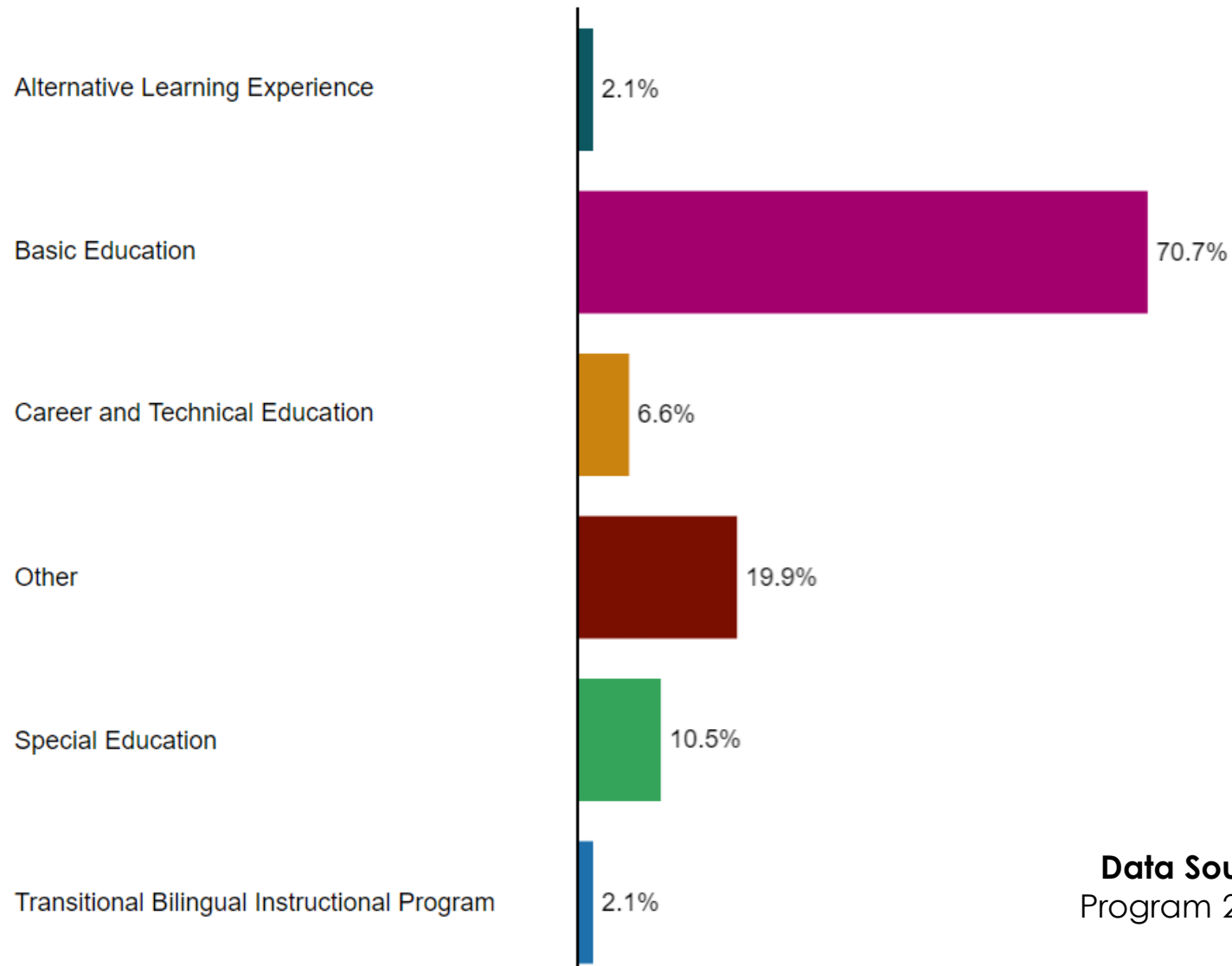
- Partnering for Equity
- Shaping Inclusionary Outcomes
- Leading with Intention
- Celebrating Models of Excellence



What Do Your Data Say?



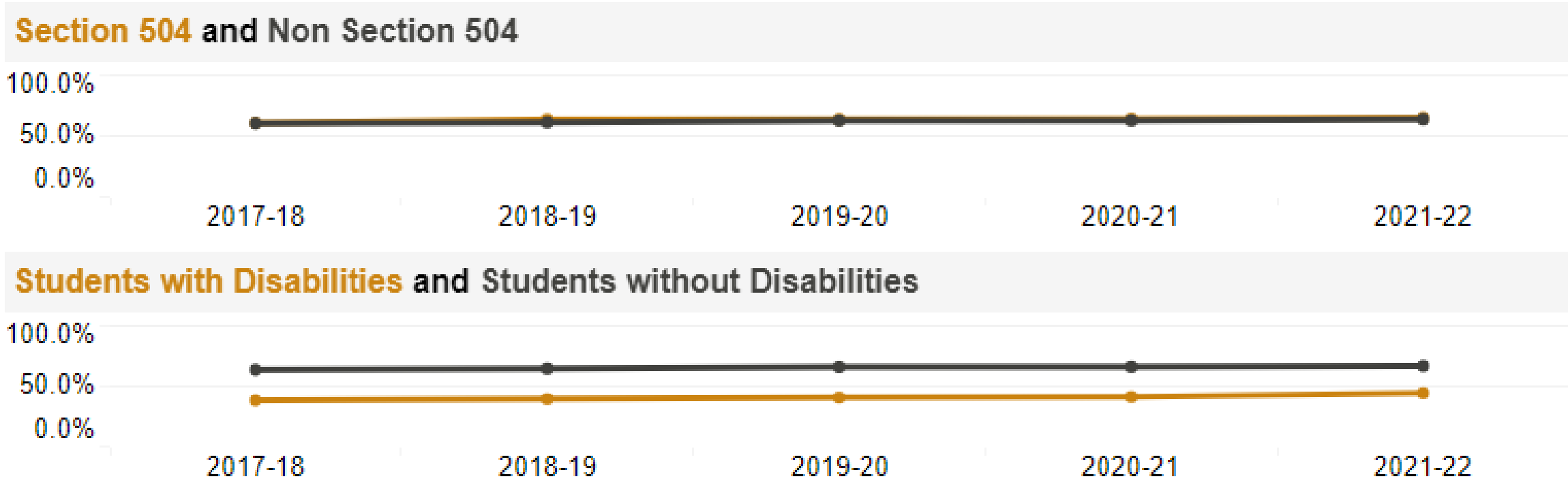
WA Educator Data (2021-22)



In WA, to only serve children with disabilities, there were:
10,572 paraeducators
7,649 special educators

Data Sources: OSPI Washington State Report Card, Teachers by Program 2021-22 and OSPI Special Education Personnel Employed Data 2021-22

WA Percentage of Completion of Dual Credit



Data Source: OSPI Washington State Report Card, Dual Credit Trend, Program

