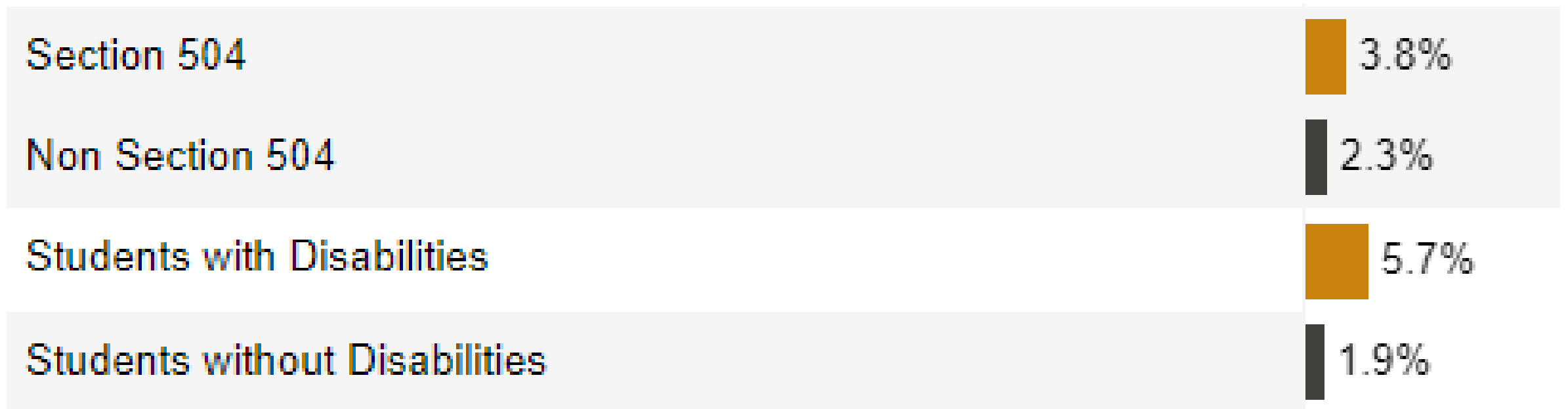


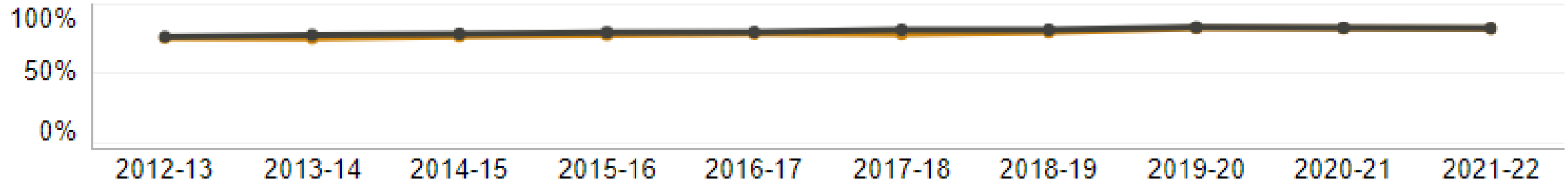
WA % of Students Excluded Due to Behavioral Violations



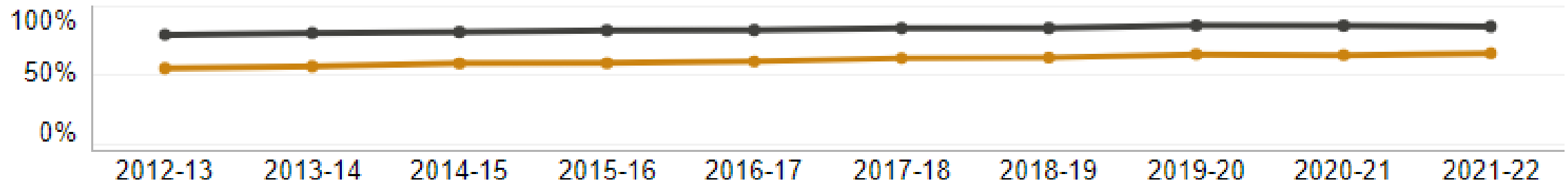
Data Source: OSPI Washington State Report Card, Discipline Rate 2019-20

WA Percentage of Students Graduating in Four Years

Section 504 and Non Section 504



Students with Disabilities and Students without Disabilities

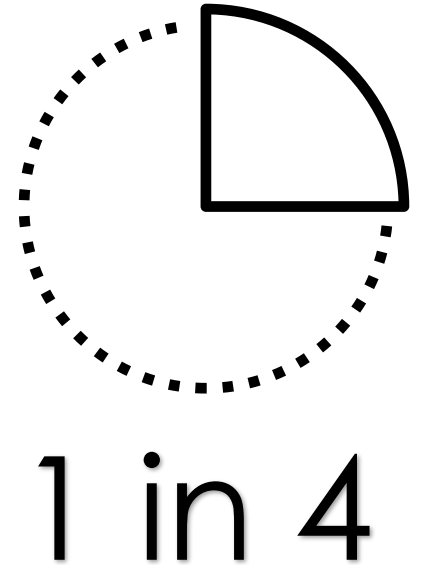


Data Source: OSPI Washington State Report Card, Graduation Trend, Program



What it Takes to Change

- ▶ Number of people worldwide impacted by data breaches in 2020
- ▶ Number of people who worked from home in 2017-18
- ▶ Number of adults in the U.S. with a disability
- ▶ Number of people it takes to change social norms (i.e., social tipping point)



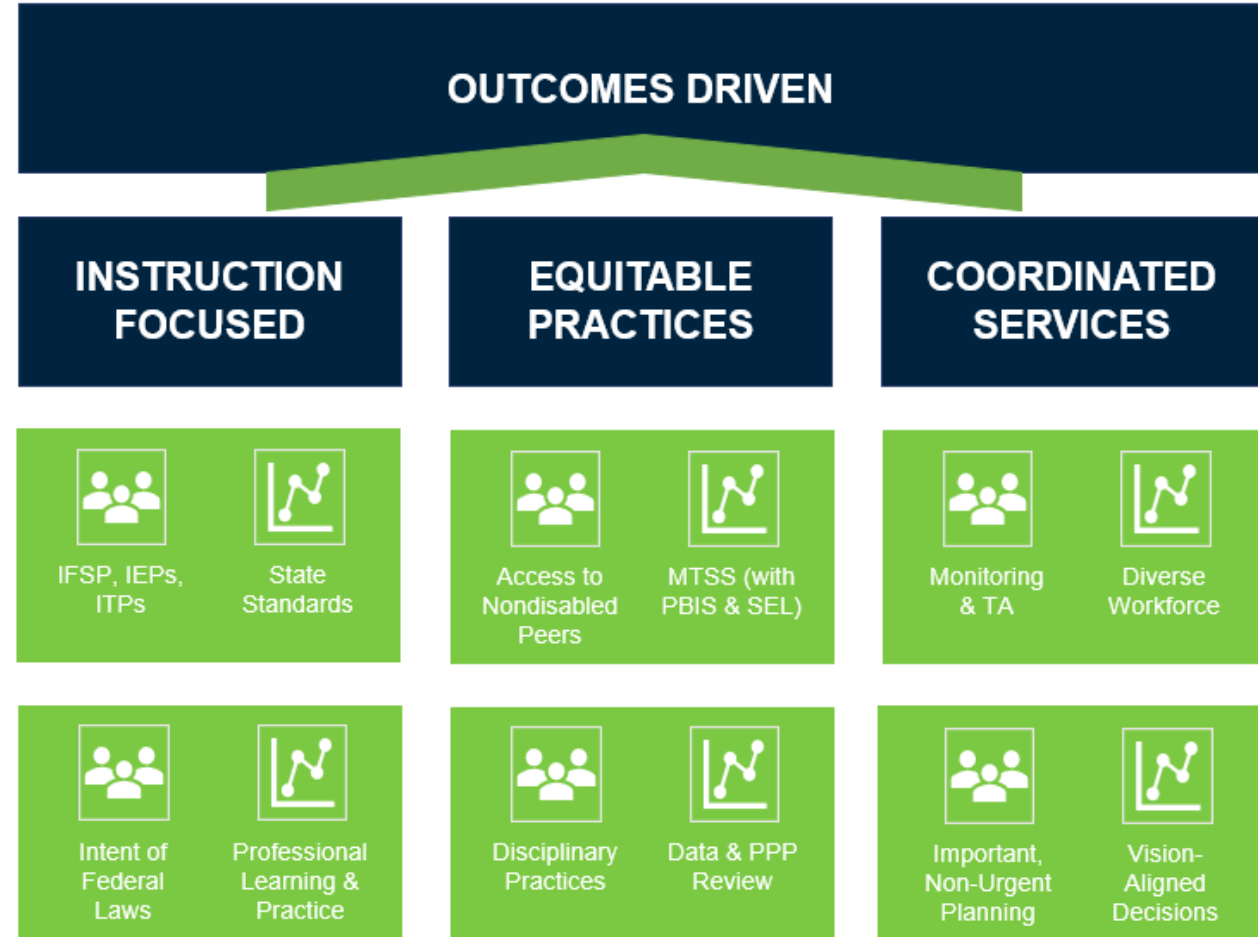
Priority Comparison (OSERS/OSPI/LEA)

Similarities

- ▶ Equity Focus
- ▶ Leadership
- ▶ Evidence-Based Instruction
- ▶ High Expectations and Beliefs
- ▶ Collaboratively Trained Personnel
- ▶ Recruitment and Retention
- ▶ Strategic Use of Resources

What are
your
priorities?

Raise the Bar for Individuals with Disabilities



It's All About Instruction

How will you ensure that each student with a disability is provided with an equitable education that leads to improved outcomes?

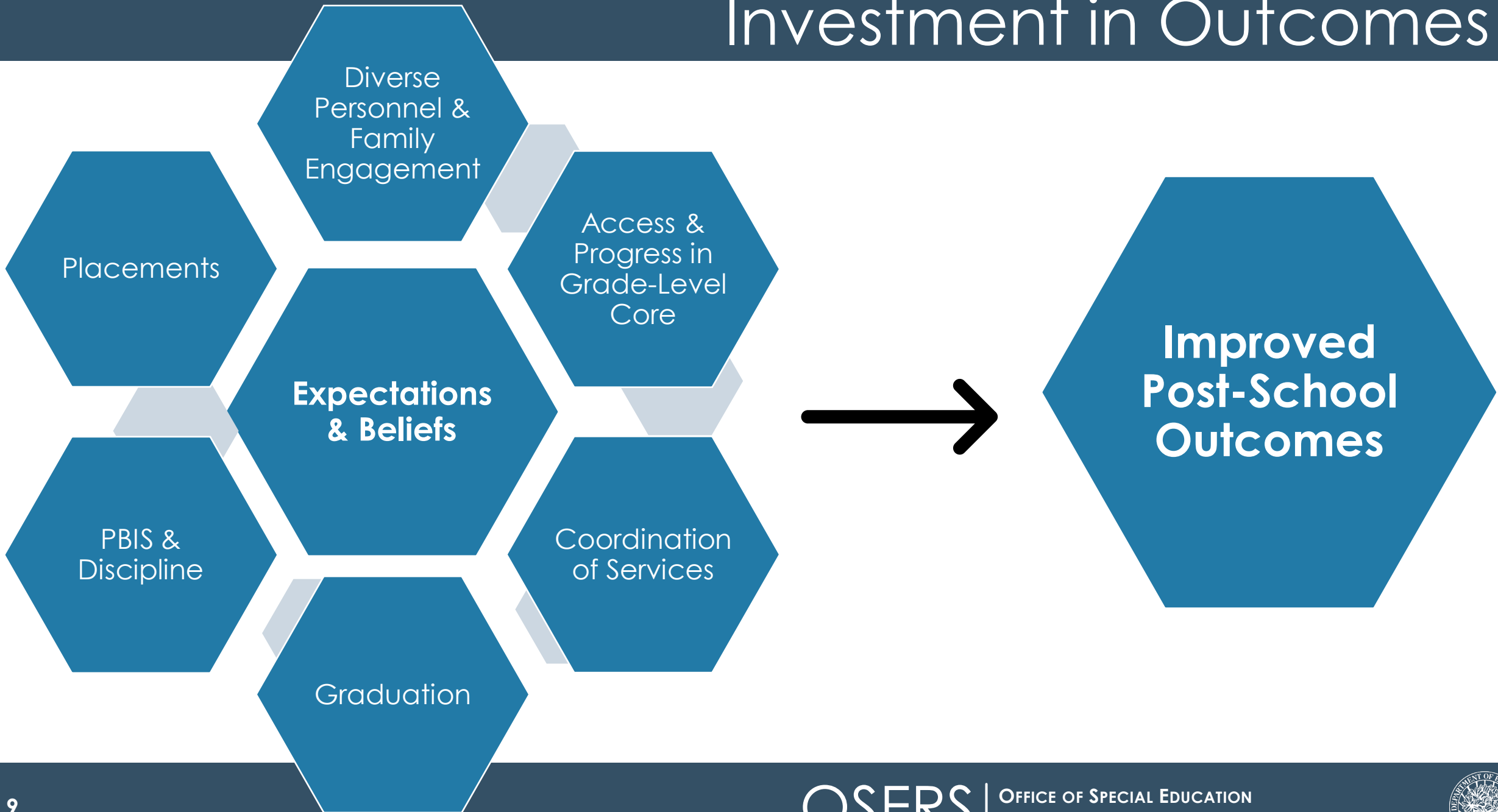


Don't Forget to Play the Long Game



- Take the steps needed to set up for long-term success
- Don't sacrifice long-term wins for short-term outcomes, including:
 - Staffing
 - IEP decisions
 - Decreasing/eliminating inequitable or non-evidence-based practices
- Be strategic!

Investment in Outcomes



Thank you

for the work that you do each day for
students, families, and
our communities