

# MTSS for School Improvement Planning

Liza Hartlyn, Director of Continuous Improvement and Student Support

RJ Monton, Director of MTSS



# Learning Objectives:

*Participants will...*



Familiarize and sense make the basics of the Continuous Improvement Framework and WA- MTSS Framework



Compare and contrast the frameworks



Create an explanation of how the frameworks support each other



# Activator- Continuum of Understanding

On a scale of VERY to NOT VERY comfortable....

How comfortable are you explaining the WA-MTSS Framework to colleagues?

How comfortable are you explaining the Continuous Improvement Framework to colleagues?





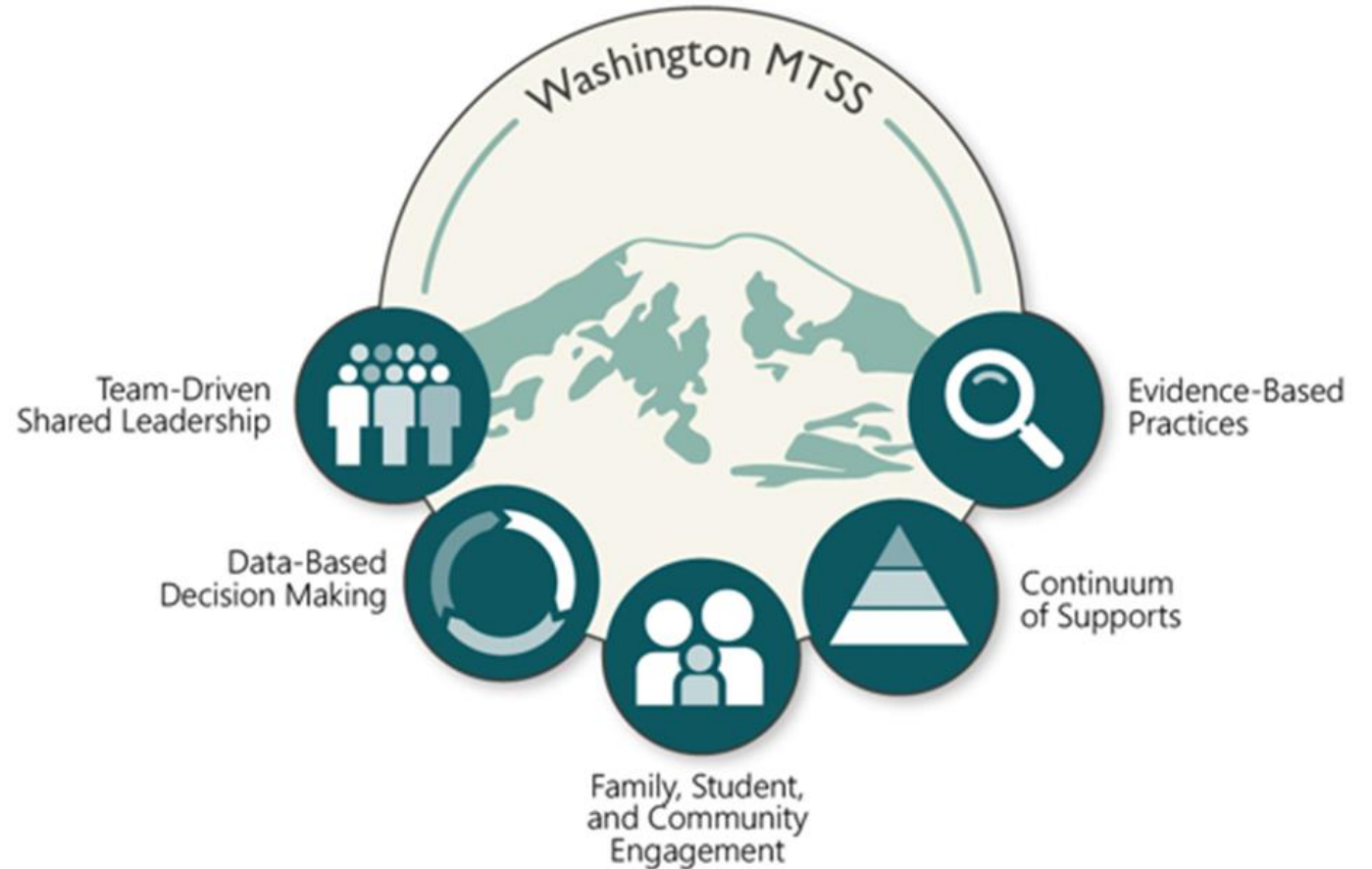
# The Frameworks

# Multi-Tiered System of Supports

The Washington MTSS Framework is an evidence-based organizational approach for districts and schools to create equitable, consistent, and flexible systems and supports that empower educators, students, families, and communities to ensure benefit for every student.

**Learn More:**

<https://www.k12.wa.us/mtss>



# Continuous Improvement Framework



	Anti-Racist Practices	Equitable Supports	Development of strong leadership at all levels	Use of data inquiry and improvement science principles	Improvement of core instructional practices	Implementation of multi-tiered systems of support
Clarity of Purpose	→					
Technical Competence	→					
Capacity Building	→					
Human Interaction Skills	→					
	↓	↓	↓	↓	↓	↓

# Activity #1- Compare Models

1

What elements are the same in both models?

2

What elements are different?

3

How do they compliment or support each other?



# Questions, Noticings, Wonderings?





How would you explain how MTSS and Continuous Improvement work together to support healthy learning systems to your colleagues on Monday?



# Contact Information

Liza Hartlyn, [liza.hartlyn@k12.wa.us](mailto:liza.hartlyn@k12.wa.us)

Director of Continuous Improvement and Student Support,  
Office of System and School Improvement (OSSI)

RJ Monton, [rj.monton@k12.wa.us](mailto:rj.monton@k12.wa.us)

Director of MTSS

Center for the Improvement of Student Learning (CISL)





Washington Office of Superintendent of  
**PUBLIC INSTRUCTION**

*Connect with us!*



[k12.wa.us](https://k12.wa.us)



[facebook.com/waospi](https://facebook.com/waospi)



[instagram.com/waospi](https://instagram.com/waospi)



[twitter.com/waospi](https://twitter.com/waospi)



[youtube.com/waospi](https://youtube.com/waospi)



[medium.com/waospi](https://medium.com/waospi)



[linkedin.com/company/waospi](https://linkedin.com/company/waospi)