



To Embrace is to Advocate

About me...



- McDonald's, Safeway, and Target
- BA in Secondary Ed & English @ Gallaudet University
- MA in Secondary Deaf Ed @ Gallaudet University
- Teaching for 11 years (MSSD, VCHS, & WSD)
- Employment Consultant - Washington Vocational Services
- Credits due: my Deaf parents, CODA* brother, Deaf husband & CODA children

*(*CODA = **C**hild **o**f **D**eaf **A**dult; a badge of honor)*

Dana Miles

2023 Washington State Teacher of the Year

Work Experience & Bilingual Language Arts (BLA) Teacher
Washington School for the Deaf



Definition: Embrace



Oxford Dictionary verb 2. **accept or support**
(a belief, theory, or change) willing and enthusiastically.

Employment Rates

53.5%

Almost half of deaf people are not in the labor force.¹

32.2%

Only **32.2% of deafdisabled** people reported being employed...More deafdisabled people work **part-time** than deaf people without additional disabilities.²



53.5%
Overall Deaf
people in the
labor force



41.7%
Deaf African
Americans in
the labor
force

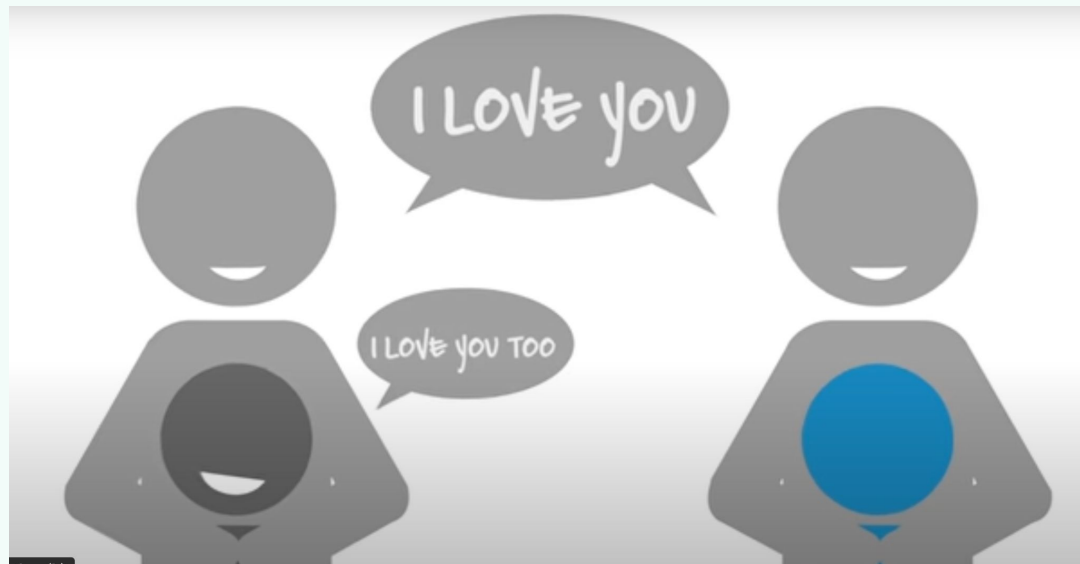


36.1%
Deaf Native
Americans in
the labor force



32.2%
Deafdisabled
people in the
labor force

Language Deprivation Impacts



90–95%

90 to 95 percent of deaf children are born to hearing parents. ¹

8%

Yet, less than **eight percent** of deaf children receive regular access to sign language in the home. ²



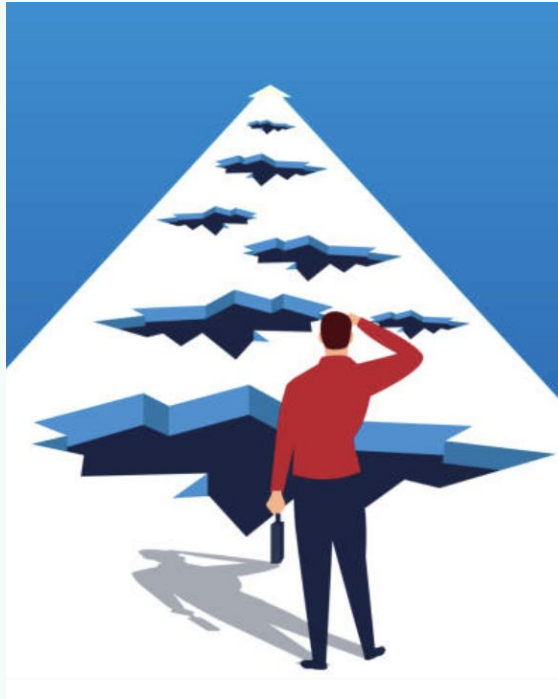
1: Elizabeth Dougherty, "Getting the Word In," The Brink: Pioneering Research from Boston University, 6th of March 2017, <https://www.bu.edu/articles/2017/asl-language-acquisition/>

2: Wyatt C. Hall, Leonard L. Levin, and Melissa L. Anderson, "Language Deprivation Syndrome: A Possible Neurodevelopmental Disorder with Sociocultural Origins," National Institution of Health, 2017, <https://www.ncbi.nlm.nih.gov/pmc/articles/PMC5467777/>



Multi-Layered Obstacles:

Audism



Ableism

Linguicism





To embrace, let's work on our A's.



01

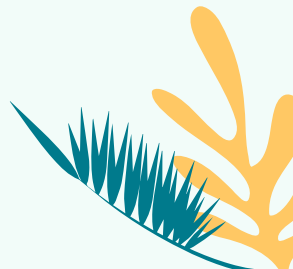
Affirm

02

Ask

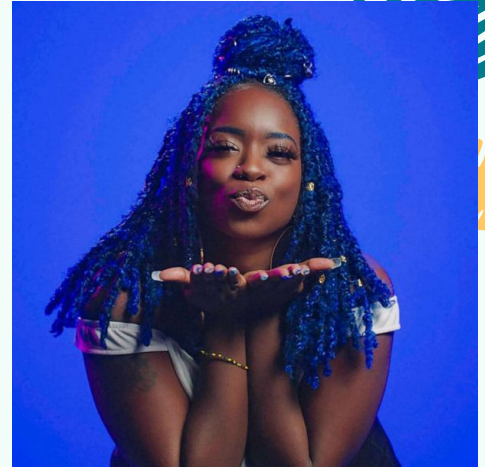
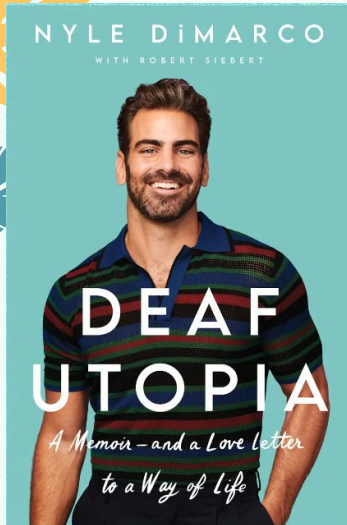
03

Advocate



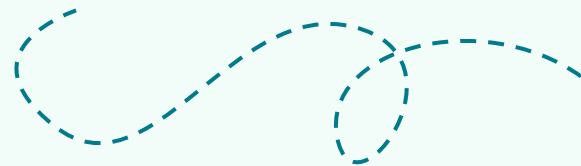
01: Affirm

Normalize our
disabilities

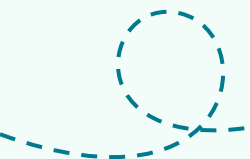





GMA



Deaf Identities



A black and white collage of six diverse people's faces, arranged horizontally. From left to right: a man with a beard and mustache, a woman with dark hair, a man with glasses and a mustache, a woman with long hair, a woman with long hair pointing her finger, and a man with a beard. The text "Deaf people are not all the same." is overlaid in white, bold, sans-serif font across the middle of the collage.

Deaf people are not all the same.

02: Ask

Accessibility & Accommodations

IDEA

LRE

SDI

IEP

504



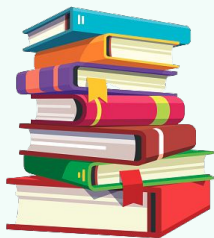
To embrace me as a Deaf person... give me these 3:



**Sign
Language**



Literacy



Advocacy

03: Advocate



Successful Advocacy = Two-Way Street





Enrique's Story...





Let's review our A's.



01

Affirm



02

Ask



03

Advocate





Let's connect.





Thank you for your time.

Any questions?

Dana Miles

watoy2023@gmail.com

Washington School for the Deaf

611 Grand Blvd

Vancouver, WA 98661



Credits: This presentation template was made by **SlideGo**, including icons by **Flaticon**, and infographics & images by **Freepik**.