



CCTS
CENTER FOR CHANGE IN
TRANSITION SERVICES

WASA/OSPI Special Ed Conference: Graduation Pathways, CTE, and Special Education

November 4, 2021

Center for Change in Transition Services (CCTS) | www.seattleu.edu/ccts

CCTS Presenters

Cinda Johnson, Ed.D.

Principal Investigator

cinda@seattleu.edu

Kris Hirschmann, M.Ed.

Director of Transition Services

hirschmk@seattleu.edu



CCTS

CENTER FOR CHANGE IN
TRANSITION SERVICES

- Empowering educators to improve transition services for youth with disabilities through **partnerships, research, and training**
- Provides reports and analysis of post-school outcomes for all former high school students in Washington who had an IEP
- Located at Seattle University
- Find us online at www.seattleu.edu

Our Services

What CCTS Provides:

- Secondary transition training
- District, ESD, and state-level post-school outcome data analysis
- Resources and materials
- Technical assistance

Who CCTS Supports:

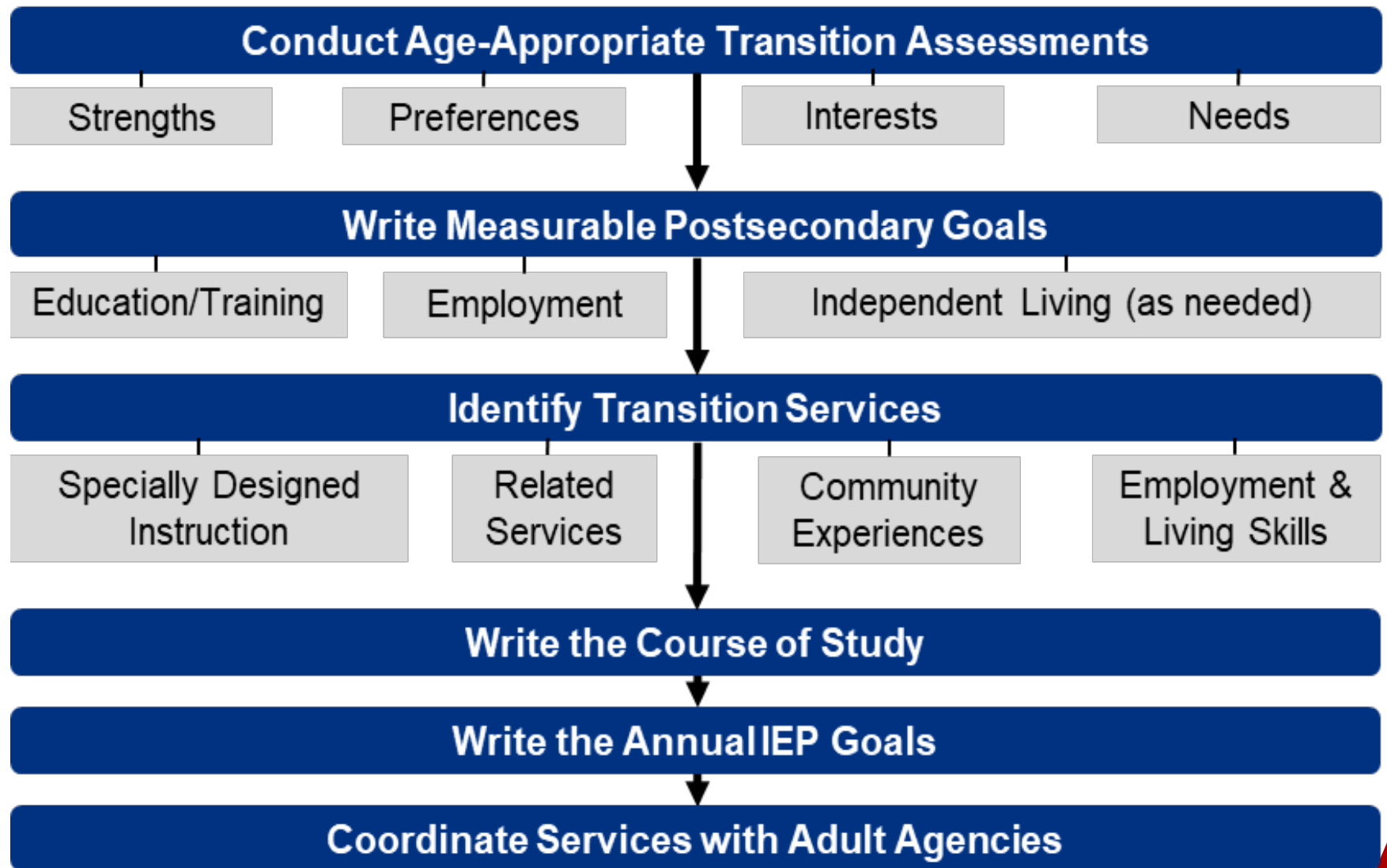
- Washington state ESDs, LEAs, public high schools
- Educators and administrators
- Agency staff
- Youth with disabilities and their families/caregivers



Transition Planning and the High School and Beyond Plan

Transition Services Flowchart

(Johnson, 2004)



Transition Planning – HSBP Similarities

Elements	High School Beyond Plan (HSBP)	IEP Transition Plan
Requirement	State graduation	Federal law
Assessment	Career Interest Inventory	Age-Appropriate Transition Assessment
Goals	Career and educational	Postsecondary and Annual IEP
Course work	Course planner	Course of Study
Summary	Current résumé or activity log	Summary of Performance

In-School Predictors by Post-School Outcome Area (1 of 2)

Predictors/Outcomes	Education	Employment	Independent Living
Career Awareness	✓	✓	
Occupational Courses	✓	✓	
Paid Employment/Work Experience	✓	✓	✓
Vocational Education	✓	✓	
Work Study		✓	
Community Experiences		✓	
Exit Exam Requirements/ High School Diploma Status		✓	
Inclusion in General Education	✓	✓	✓
Program of Study		✓	

(NSTTAC, 2013)

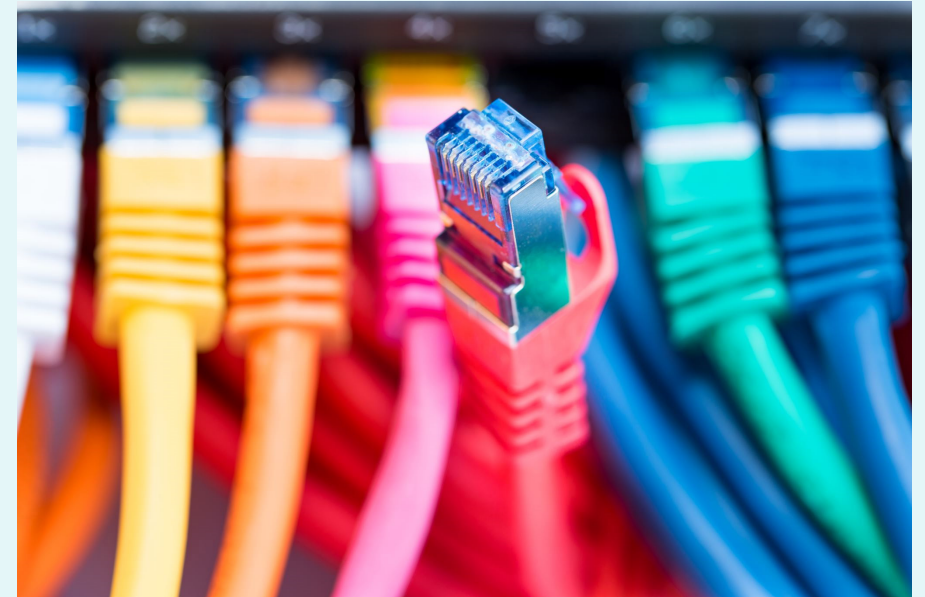
In-School Predictors by Post-School Outcome Area (2 of 2)

Predictors/Outcomes	Education	Employment	Independent Living
Self Advocacy/Self-Determination	✓	✓	
Self-Care/Independent Living	✓	✓	✓
Social Skills	✓	✓	
Interagency Collaboration	✓	✓	
Parent Expectations	✓	✓	
Parental Involvement		✓	
Student Support	✓	✓	✓
Transition Program	✓	✓	

(NSTTAC, 2013)

Activity

- [Sherrie Brown HSBP & IEP](#)
- Where do you see evidence of addressing the predictors?
- Do you see some areas that are not addressed? Do they need to be for this student?



Microsoft Stock Image

Discussion & Questions

- Did anything stand out to you?
- How will you use this information with your staff/students/families?



Microsoft Stock Image

Contact and Connect with CCTS



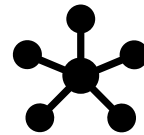
ccts@seattleu.edu



[Subscribe to our newsletters](#)



www.seattleu.edu/ccts



[Join the CCTS Transition Network on Basecamp](#)



206-296-6494

Thank you 😊

OSPI's Priorities for Improving Outcomes for Students with Disabilities



OSPI Disclaimer



Washington Office of Superintendent of
PUBLIC INSTRUCTION

This training is meant to supplement, not supplant reading bulletins and accompanying documents; guidance from the U.S. Department of Education; chapter 392-172A WAC; Part 300 of the federal regulations; and the Individuals with Disabilities Act.

This presentation and/or materials should be viewed and applied by users according to their specific needs. The presentation should be used as guidance and is not intended as legal advice.