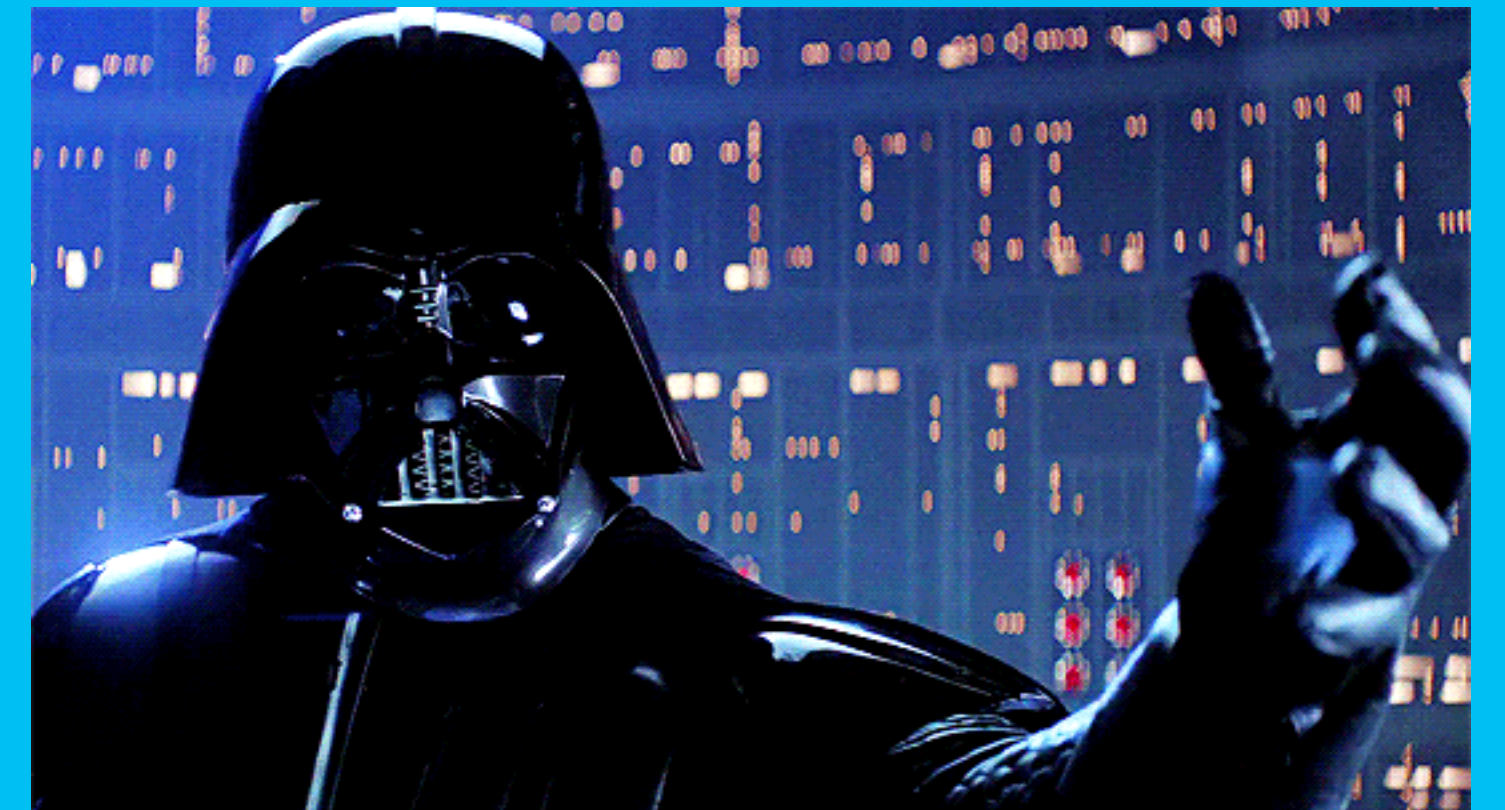
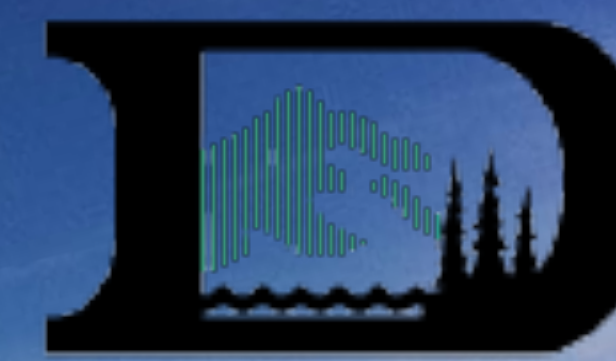


2021 WASA SPRING CONFERENCE

SEIZE THE MOMENT







GIVE YOURSELF A JEDI NAME

Your Jedi First Name

- 1) Take the first 3 letters of your last name.
- 2) Then take the first 2 letters of your first name.

Your Jedi Last Name

- 1) Take the first 3 letters of your mother's maiden name.
- 2) Then take the first 3 letters of the town or city you were born in.
- 3) Be generous with hyphens, dashes, and pauses

My Jedi name is Far-Mi Merbos



slido



2020 WAS A YEAR!



Global Cases

24,830,948

Cases by Country/Region/Sovereignty

5,951,047 US
3,804,803 Brazil
3,463,972 India
982,573 Russia
629,961 Peru



Global Deaths

839,221

182,653 deaths
US

119,504 deaths
Brazil

63,146 deaths
Mexico

US State Level

Deaths, Recovered

32,937 deaths, 74,923 recovered
New York US

15,933 deaths, 33,778 recovered
New Jersey US

12,865 deaths, recovered
California US

[Education](#) | [Health](#) | [Local News](#)

It's unsafe for most Washington students to return to school buildings this fall, state says

Aug. 5, 2020 at 3:06 pm | Updated Aug. 6, 2020 at 3:23 pm



More Schools In Colorado Report COVID Closures, Quarantines


Millions of students — and their teachers — embark on vast experiment with distance learning

d-19



STATE EDUCATION POLICY

AUGUST 17, 2020




LOUIS FREEDBERG

2 COMMENTS

[Twitter](#)
[Facebook](#)
[LinkedIn](#)
[StumbleUpon](#)

JAY INSLEE
Governor



STATE OF WASHINGTON
OFFICE OF THE GOVERNOR
P.O. Box 40002 • Olympia, Washington 98504-0002 • (360) 902-4111 • www.governor.wa.gov

PROCLAMATION BY THE GOVERNOR
EXTENDING PROCLAMATIONS 20-08 AND 20-09

20-09.1

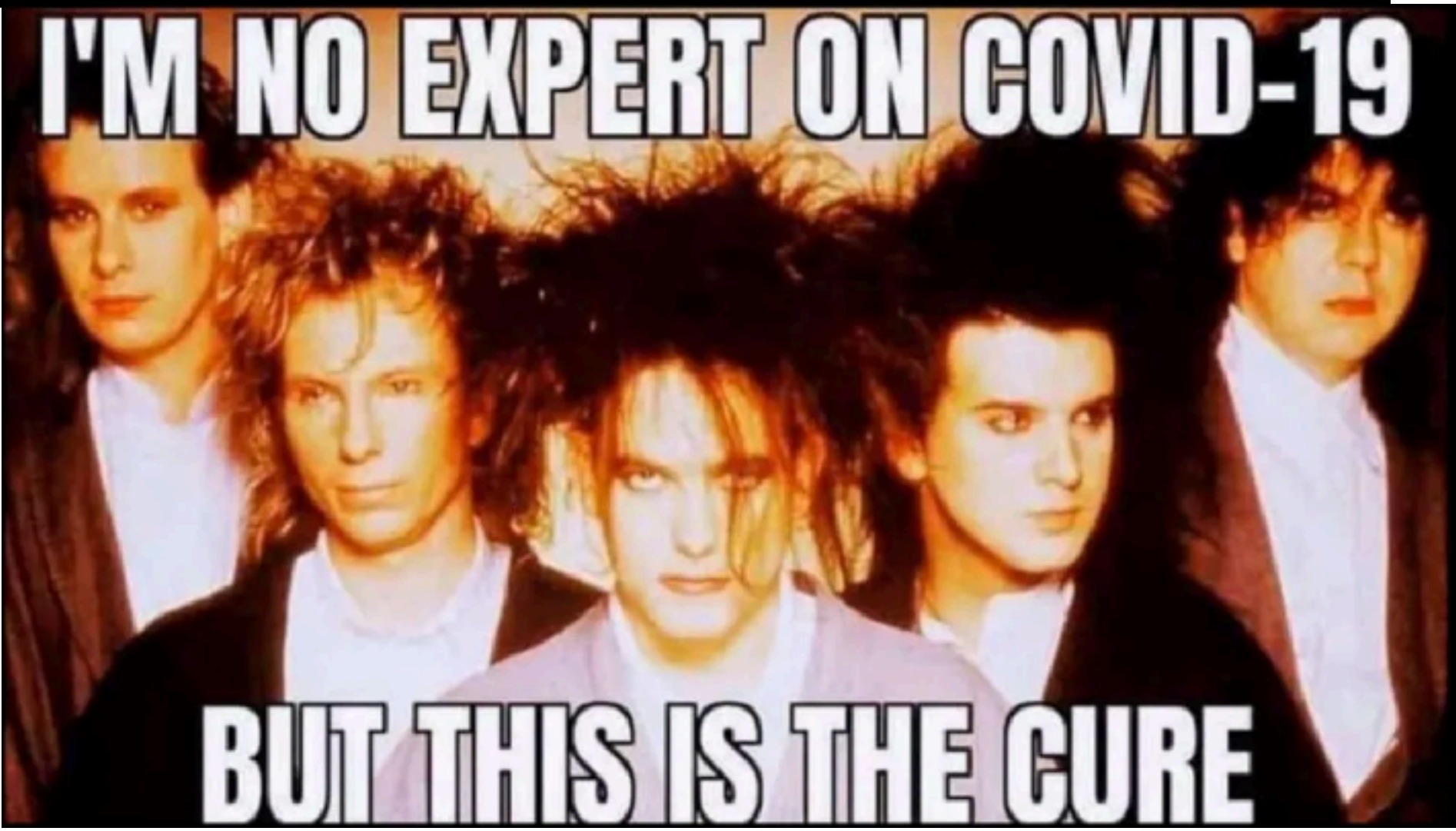
Statewide K-12 School Closures



MARTY, WHATEVER HAPPENS



**DON'T EVER GO TO 2020
I'M NO EXPERT ON COVID-19**



BUT THIS IS THE CURE

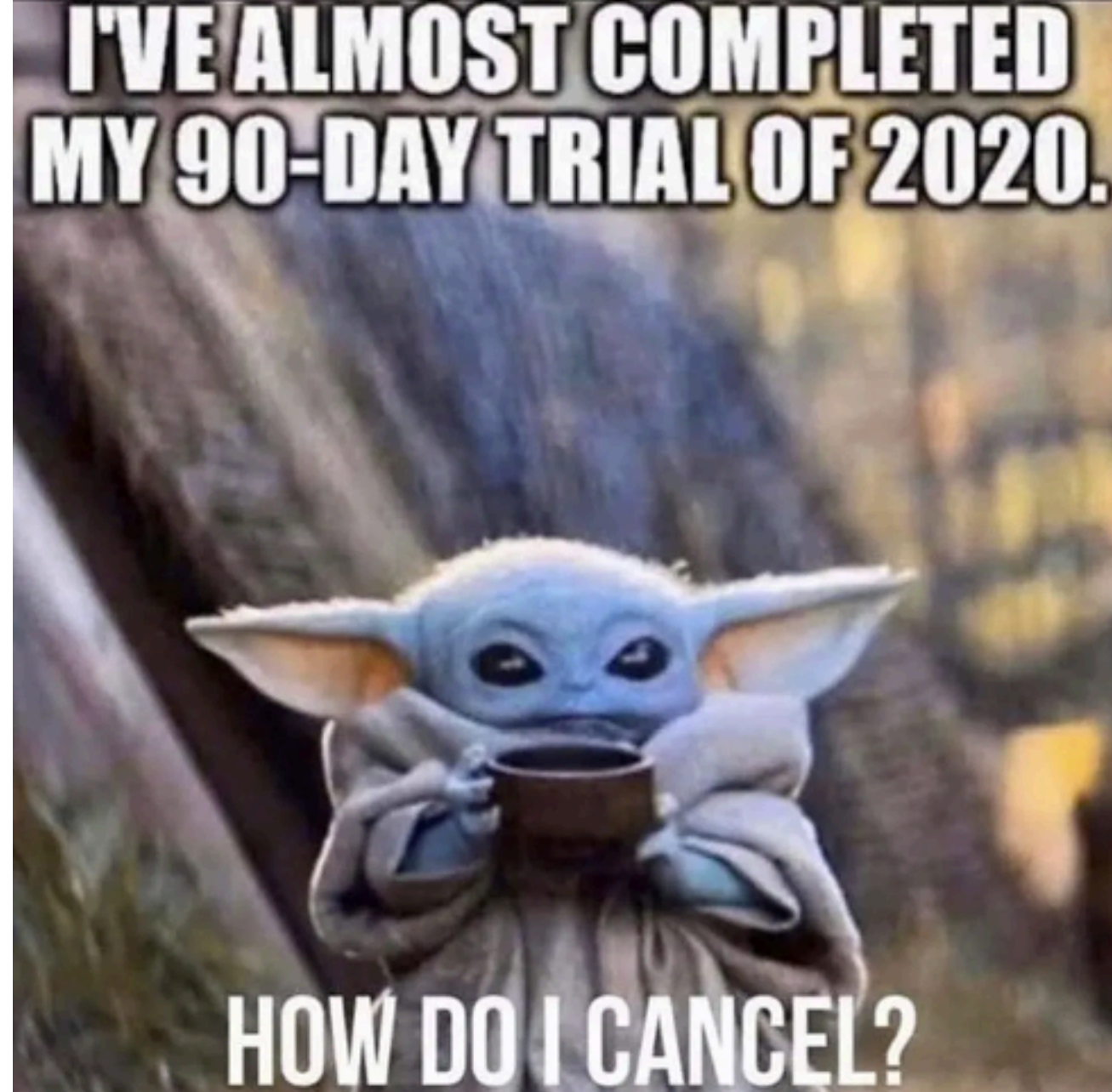


2020



Very bad, would not recommend.

**I'VE ALMOST COMPLETED
MY 90-DAY TRIAL OF 2020.**



HOW DO I CANCEL?

**THE END OF
EVERY MONTH IN 2020...**



BUT WAIT...THERE'S MORE!

UNPRECEDENTED



zoom

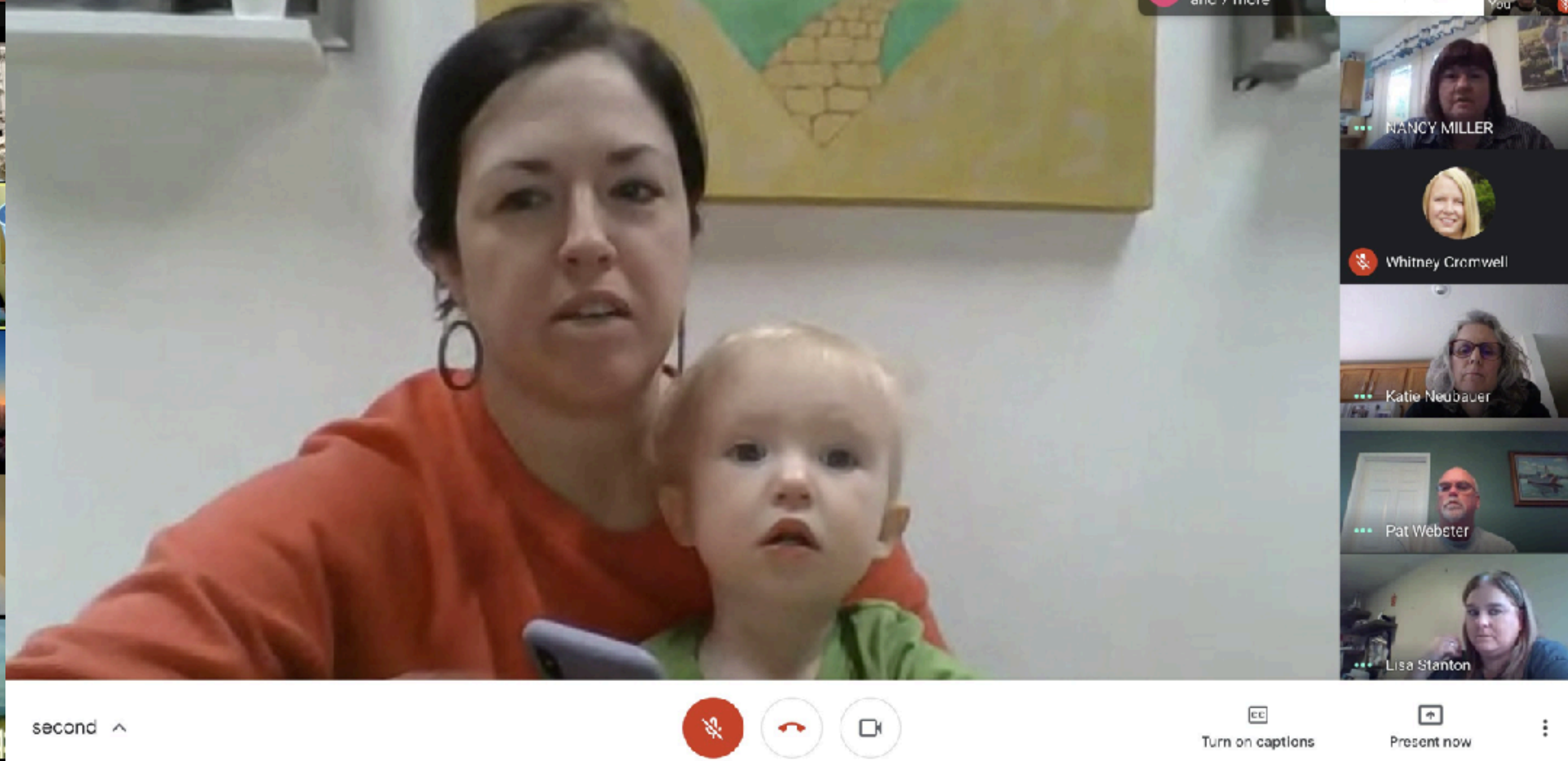
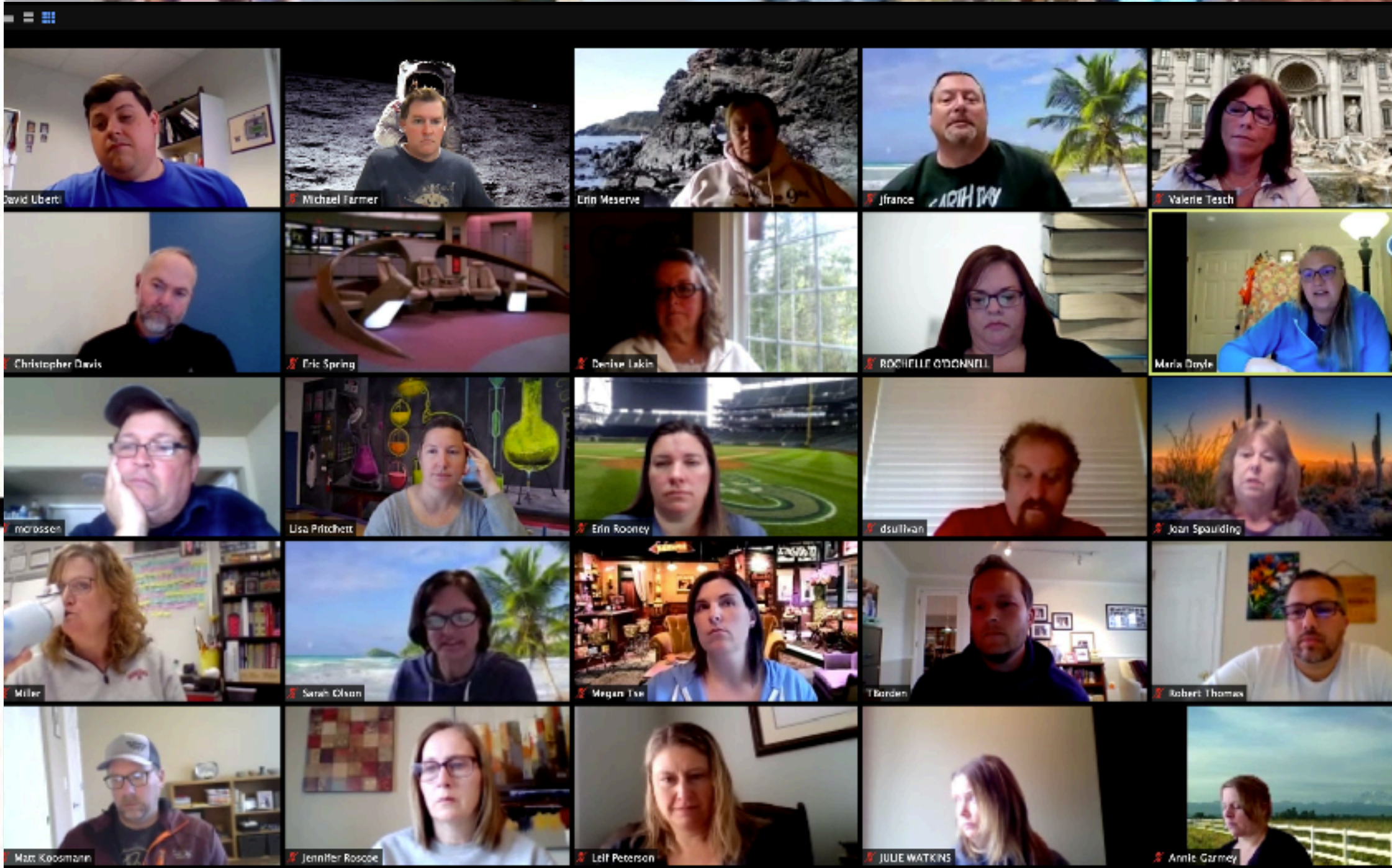


Google



Facility Use Rates - Proposed 3-4-21

| | A | B | C | D | E | F | G | H | I | J | K | L | M | N | O | P |
|----|-------------------------------------|------|-------|----------|-----------|-----------|---------|-------|----------|-------|---|---|---|---|---|---|
| 1 | Proposed Facility Usage Rates | | | | | | | | | | | | | | | |
| 2 | Elementary School | 1 | 2 | 3 | 4 | 5 | | | | | | | | | | |
| 3 | Gym | 0 \$ | 20.00 | \$ 30.00 | \$ 60.00 | \$ 100.00 | | | | | | | | | | |
| 4 | Multipurpose Room | 0 \$ | 20.00 | \$ 30.00 | \$ 65.00 | \$ 100.00 | | | | | | | | | | |
| 5 | Classroom | 0 \$ | 20.00 | \$ 30.00 | \$ 40.00 | \$ 50.00 | | | | | | | | | | |
| 6 | Library | 0 \$ | 20.00 | \$ 30.00 | \$ 65.00 | \$ 100.00 | | | | | | | | | | |
| 7 | Kitchen | 0 \$ | 20.00 | \$ 30.00 | \$ 65.00 | \$ 100.00 | | | | | | | | | | |
| 8 | LTES Lower Field | 0 \$ | 5.00 | 2.00 | \$10.00 | 4.00 | \$15.00 | 6.00 | \$ 20.00 | 8.00 | | | | | | |
| 9 | Grass Playfield or Baseball Diamond | 0 \$ | 10.00 | 4.00 | \$20.00 | 8.00 | \$30.00 | 16.00 | \$ 40.00 | 32.00 | | | | | | |
| 10 | | | | | | | | | | | | | | | | |
| 11 | Middle School | 1 | 2 | 3 | 4 | 5 | | | | | | | | | | |
| 12 | Main Gym w/ Bleachers | 0 \$ | 25.00 | \$ 35.00 | \$ 100.00 | \$ 150.00 | | | | | | | | | | |
| 13 | Auxiliary Gym | 0 \$ | 20.00 | \$ 30.00 | \$ 65.00 | \$ 100.00 | | | | | | | | | | |
| 14 | Classroom | 0 \$ | 20.00 | \$ 30.00 | \$ 40.00 | \$ 50.00 | | | | | | | | | | |
| 15 | Commons | 0 \$ | 20.00 | \$ 30.00 | \$ 55.00 | \$ 75.00 | | | | | | | | | | |
| 16 | Kitchen | 0 \$ | 20.00 | \$ 30.00 | \$ 65.00 | \$ 100.00 | | | | | | | | | | |
| 17 | Grass Playfield | 0 \$ | 10.00 | 4.00 | \$20.00 | 8.00 | \$30.00 | 16.00 | \$40.00 | 32.00 | | | | | | |
| 18 | Tennis Courts | 0 \$ | 10.00 | 4.00 | \$20.00 | 8.00 | \$30.00 | 16.00 | \$40.00 | 32.00 | | | | | | |
| 19 | Main Baseball Diamond w/ Dugouts | 0 \$ | 20.00 | 8.00 | \$30.00 | 16.00 | \$60.00 | 32.00 | \$100.00 | 64.00 | | | | | | |
| 20 | | | | | | | | | | | | | | | | |
| 21 | | | | | | | | | | | | | | | | |
| 22 | | | | | | | | | | | | | | | | |
| 23 | | | | | | | | | | | | | | | | |
| 24 | | | | | | | | | | | | | | | | |
| 25 | | | | | | | | | | | | | | | | |
| 26 | | | | | | | | | | | | | | | | |
| 27 | | | | | | | | | | | | | | | | |
| 28 | | | | | | | | | | | | | | | | |
| 29 | | | | | | | | | | | | | | | | |
| 30 | | | | | | | | | | | | | | | | |
| 31 | | | | | | | | | | | | | | | | |
| 32 | | | | | | | | | | | | | | | | |



CHECK IN

ON SLIDO

QUESTION #1

WHAT HAVE YOU USED ZOOM FOR THE PAST
YEAR?



Spillway, Grand Coulee Dam

Fifteen acres of falling water cover the spillway of the dam during the summer run-off. Millions of Kilowatts of energy go to waste in the plunge pool below the dam.

Pub. by J. BOYD ELLIS, ARLINGTON, WASH.

1915



© Cobra Golf Inc. 1999

THE FUTURE OF WORK



JOBS WITH THE HIGHEST PHYSICAL PROXIMITY
ARE LIKELY TO BE MOST DISRUPTED.

**REMOTE WORK AND VIRTUAL MEETINGS ARE LIKELY
TO CONTINUE, ALBEIT LESS INTENSELY THAN AT
THE PANDEMIC'S PEAK.**

**E-COMMERCE HAS GROWN TWO TO FIVE TIMES
FASTER THAN BEFORE THE PANDEMIC.**

**COVID-19 MAY PROPEL FASTER ADOPTION OF
AUTOMATION AND AI, ESPECIALLY IN WORK ARENAS
WITH HIGH PHYSICAL PROXIMITY.**

**THE MIX OF OCCUPATIONS MAY SHIFT, WITH LITTLE
JOB GROWTH IN LOW-WAGE OCCUPATIONS AND AS
MANY AS 25 PERCENT MORE WORKERS MAY NEED
TO SWITCH OCCUPATIONS THAN BEFORE THE
PANDEMIC.**

**COMPANIES AND POLICYMAKERS CAN HELP
FACILITATE WORKFORCE TRANSITIONS.**

CHECK IN

ON SLIDO

QUESTION #2

**HOW MUCH DO YOU THINK THE PANDEMIC WILL
IMPACT THE WORKFORCE AND OUR JOBS?**

HOW WILL YOU CONTINUE THE USE OF VIDEO?



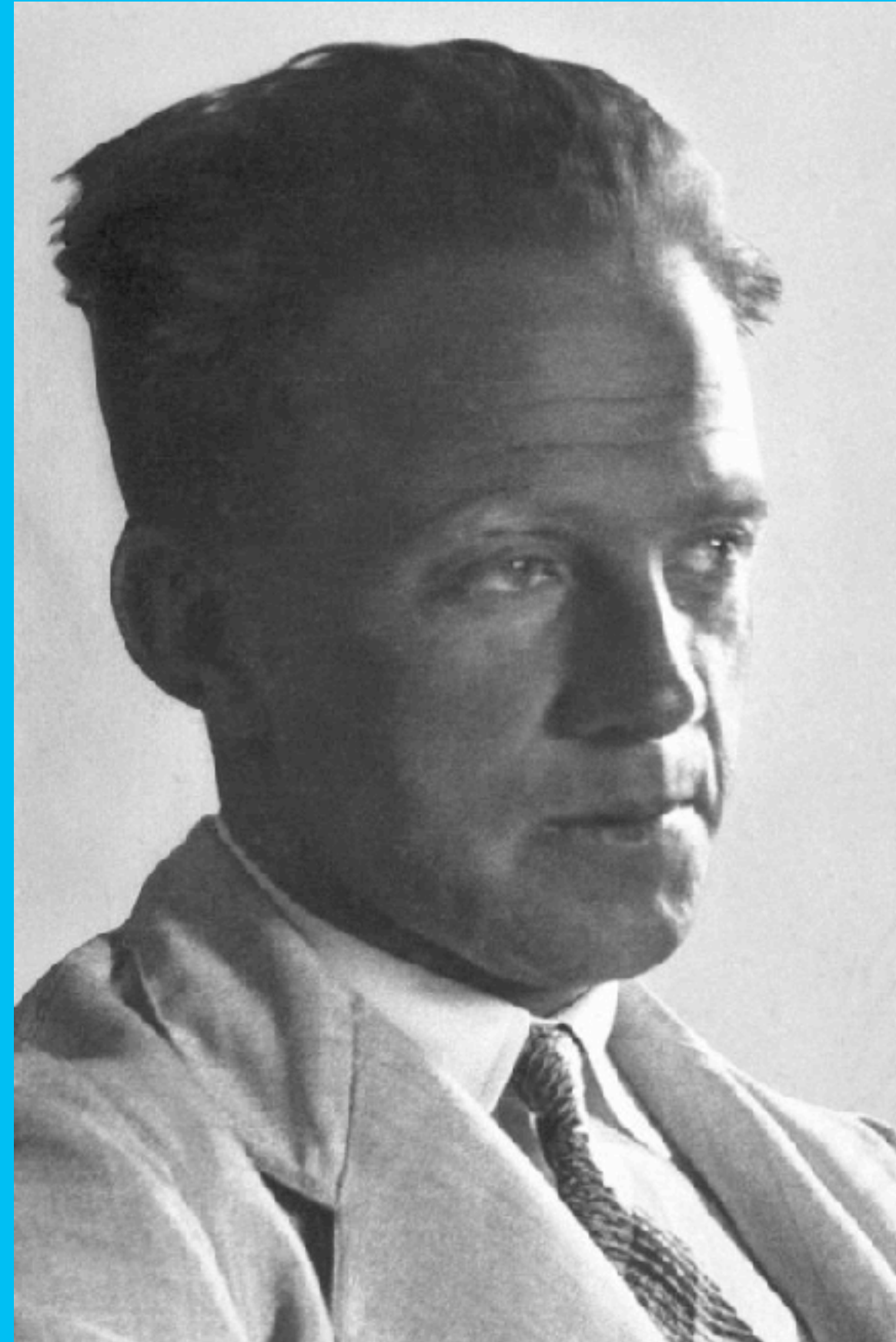
HOW WILL YOU CONTINUE THE USE OF VIDEO?

WILL YOU MAINTAIN VIDEOCONFERENCING?

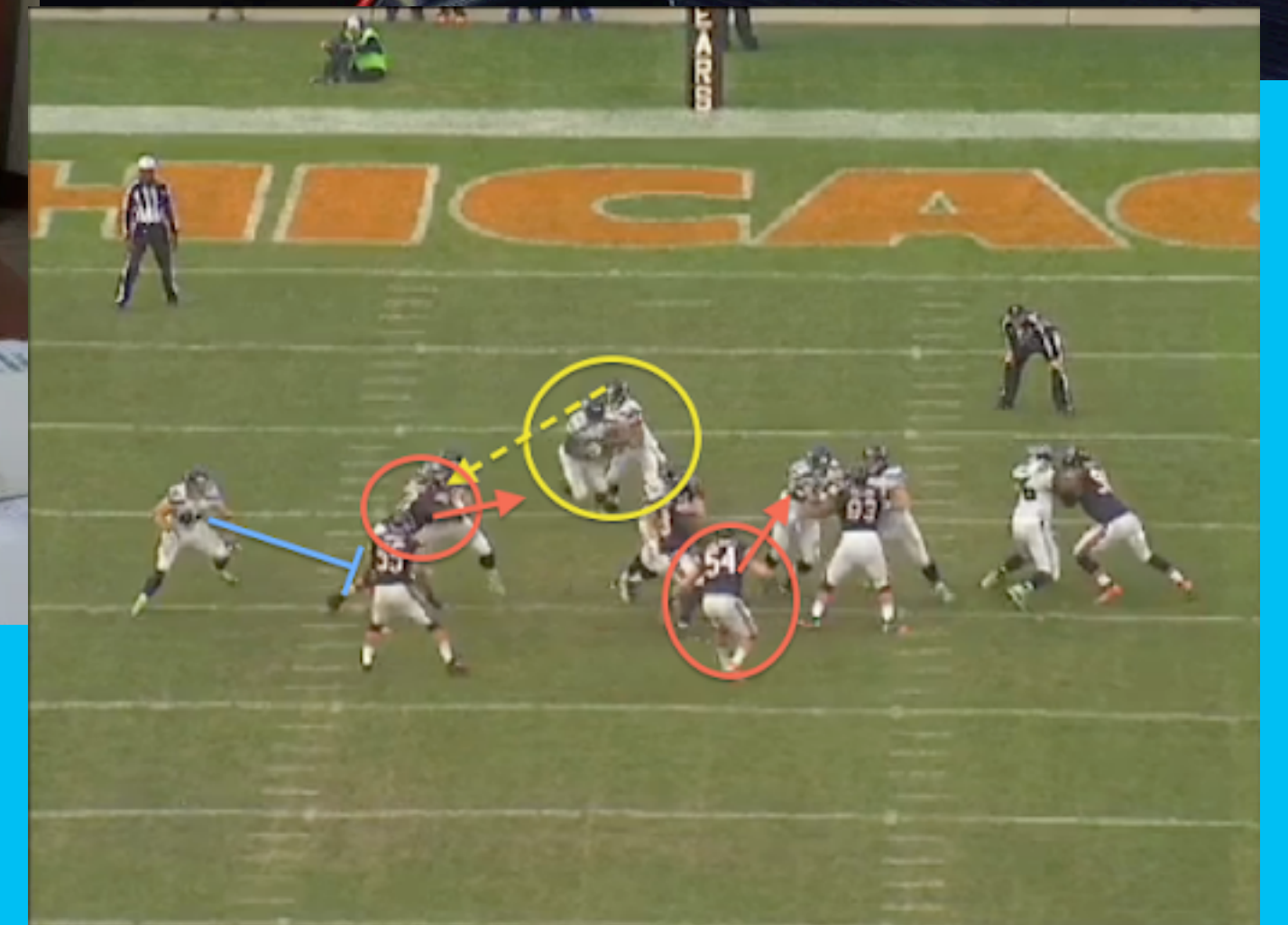
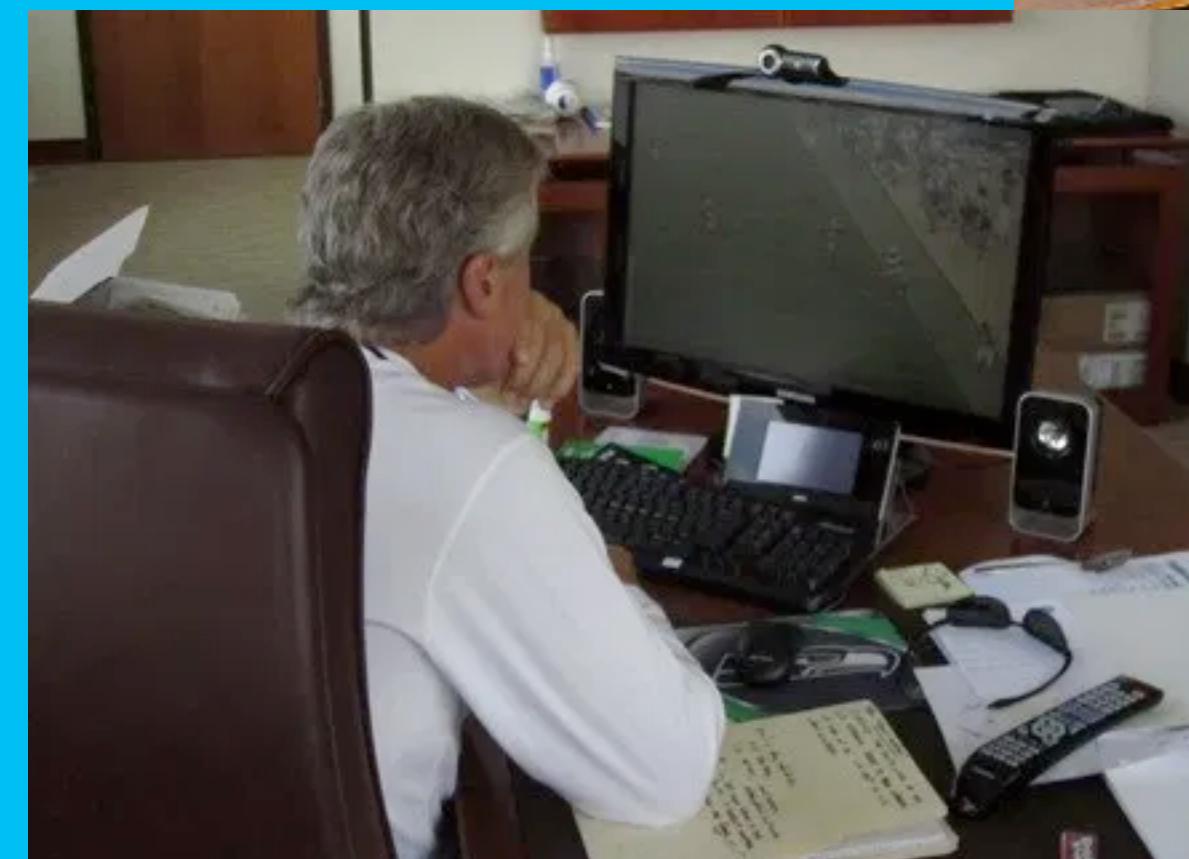
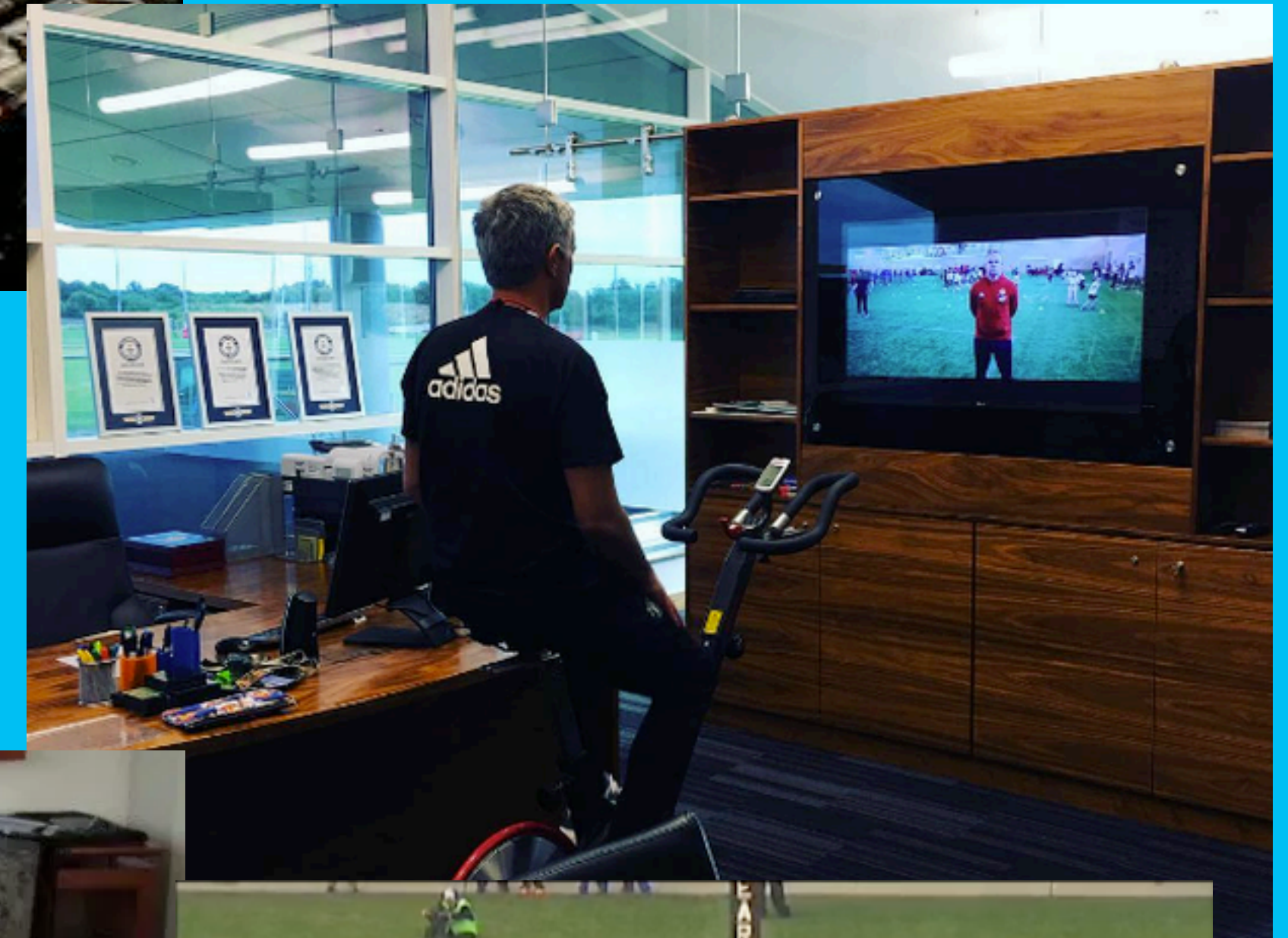


**HOW WILL YOU CONTINUE
TO USE VIDEO?**

WHO ARE YOUR MASTER TEACHERS?



HOW WILL YOU CONTINUE TO USE VIDEO?



CAN YOU USE VIDEO FOR PROFESSIONAL GROWTH?

CHECK IN

ON SLIDO

QUESTION #3

HOW MIGHT YOU USE VIDEO GOING FORWARD?

WHAT ASPECTS OF REMOTE LEARNING ARE YOU GOING TO KEEP?

"Luke, you must learn the ways of the force"



"I'm ready, Obi Wan."



"Ooooookay. Let's see here. After you've logged in, you're gonna want to go to the student portal and click Jedi...."



WHAT ASPECTS OF REMOTE LEARNING ARE YOU GOING TO KEEP?

CONTINUE TO OFFER SOME FORM OF REMOTE AND/OR ONLINE LEARNING



**WHAT ASPECTS OF REMOTE
LEARNING ARE YOU GOING TO
KEEP?**

**PROMOTE THE CONTINUED USE OF A
LEARNING MANAGEMENT SYSTEM**



**WHAT ASPECTS OF REMOTE
LEARNING ARE YOU GOING TO
KEEP?**

**CONTINUE MAKING INSTRUCTIONAL
VIDEOS**



**WHAT ASPECTS OF REMOTE
LEARNING ARE YOU GOING TO
KEEP?**

**HOW AVAILABLE WILL WE CONTINUE
TO BE FOR PARENTS?**



CHECK IN

ON SLIDO

QUESTION #4

**HOW CAN CONTINUED USE OF CERTAIN ASPECTS OF
REMOTE LEARNING PREPARE STUDENTS FOR THEIR
FUTURE?**

**HOW ARE YOU GOING TO
COLLABORATE WITH
STAKEHOLDERS GOING
FORWARD?**



HOW ARE YOU GOING TO COLLABORATE WITH STAKEHOLDERS GOING FORWARD?

BOARD MEETINGS



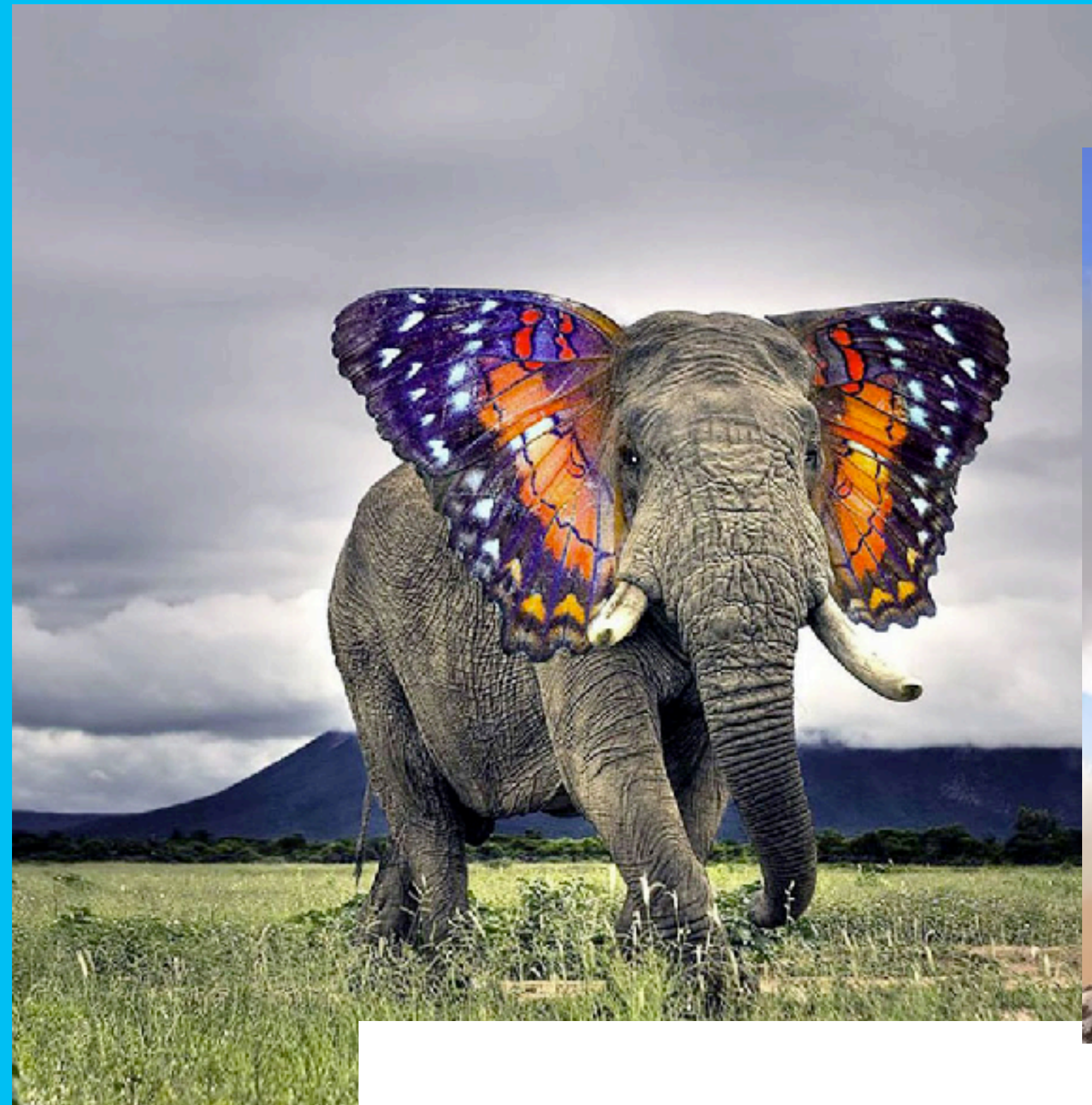
**HOW ARE YOU GOING TO
COLLABORATE WITH
STAKEHOLDERS GOING
FORWARD?**

CONFERENCES, IEP MEETINGS



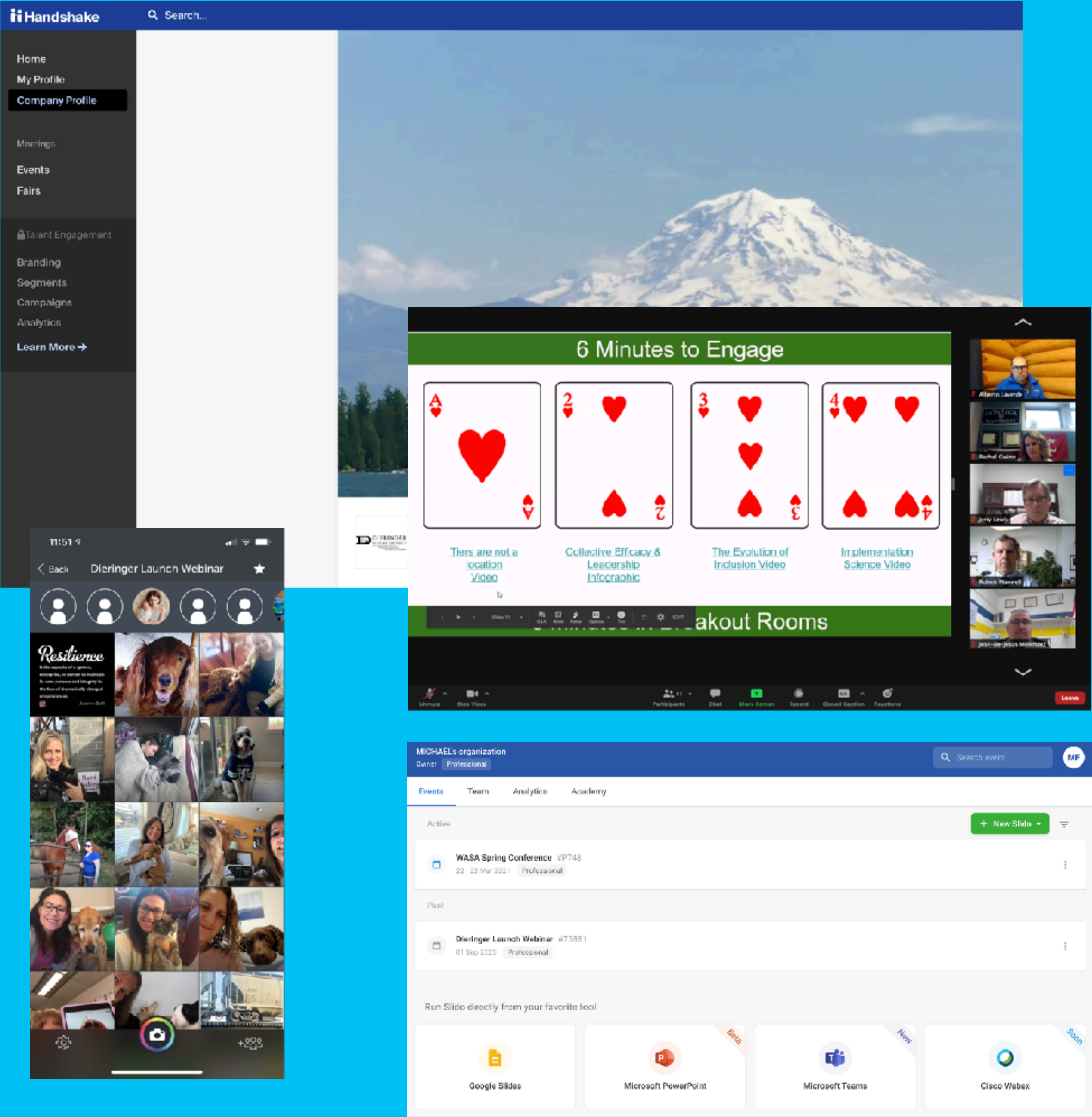
**HOW ARE YOU GOING TO
COLLABORATE WITH
STAKEHOLDERS GOING
FORWARD?**

**ARE YOU PREPARING FOR HYBRID
MEETINGS?**



HOW ARE YOU GOING TO COLLABORATE WITH STAKEHOLDERS GOING FORWARD?

WHAT ABOUT OTHER ASPECTS OF OUR WORK?



CHECK IN

ON SLIDO

QUESTION #5

WHAT DOES CONNECTING WITH THE COMMUNITY
LOOK LIKE IN A POST COVID WORLD?

BE BETTER AT BEING DIGITAL





THERE ARE CERTAIN PEOPLE YOU JUST KEEP COMING BACK TO. SHE IS RIGHT IN FRONT OF YOU. YOU BEGIN TO WONDER COULD YOU FIND A BETTER ONE COMPARED TO HER NOW SHE'S IN QUESTION & ALL AT ONCE THE CROWD BEGINS TO SING

SOMETIMES THE HARDEST THING & THE RIGHT THING ARE THE SAME.

MAYBE YOU WANT; HER MAYBE YOU NEED HER; MAYBE YOU STARTED TO COMPARE TO SOMEONE NOT THERE. LOOKING FOR THE RIGHT ONE YOU LINE UP THE WORLD TO FIND WHERE NO QUESTIONS CROSS YOUR MIND. BUT SHE WON'T KEEP ON WAITING FOR YOU WITHOUT A DOUBT MUCH LONGER FOR YOU TO SORT IT OUT

WHATCHA GONNA DO?