

CULTIVATING LEADERS WHO
THRIVE

WATERVILLE SCHOOL DISTRICT



THIS IS THE SOUND OF ONE VOICE.....

[HTTPS://WWW.YOUTUBE.COM/WATCH?V=
N-4JEHJEN-S](https://www.youtube.com/watch?v=N-4JEHJEN-S)



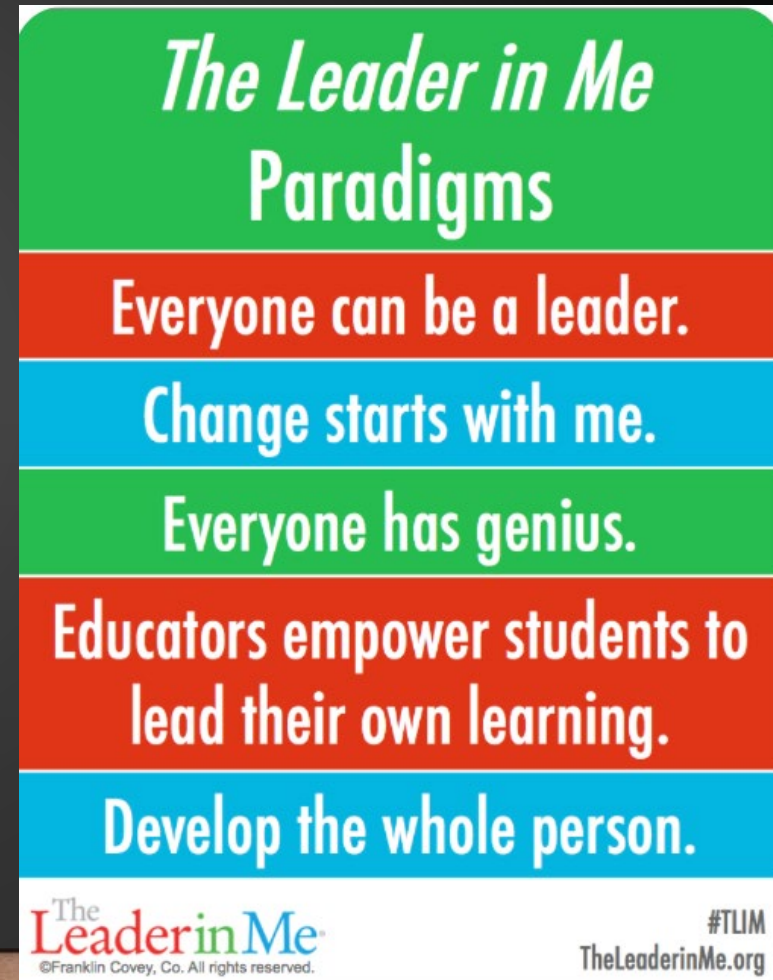


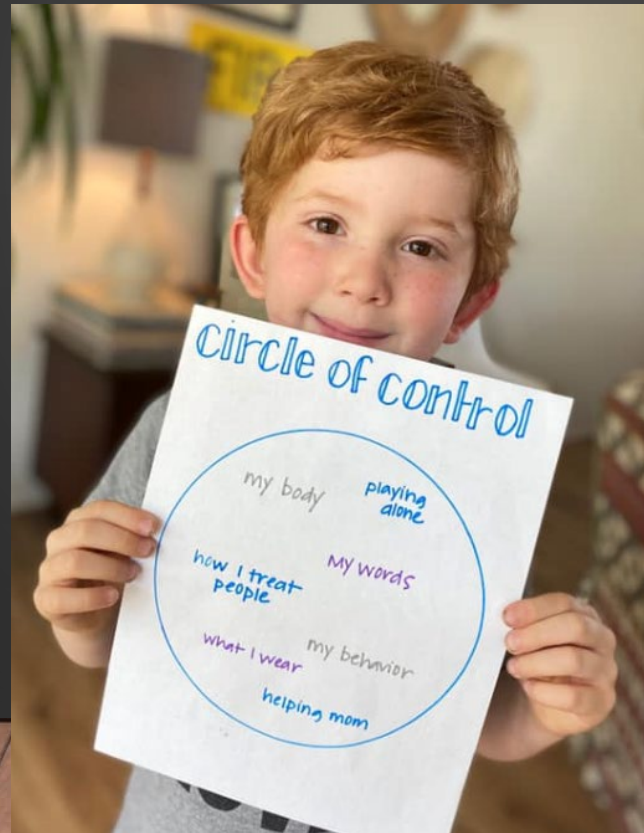
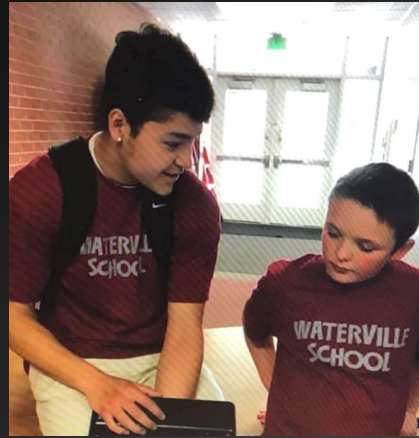
IT STARTED WITH A DREAM

- We were without an identity (A small school who was trying to be something we weren't)
- Kids were disengaged (and so were staff)
- We had lost what it meant to be a 'Shocker'
- A group of staff began to search for what we wanted to have as our new reality (Future Protocol)

A LITTLE BIT ABOUT US

- We are home to 265 student leaders in 1 building.
- We employ over 50 staff leaders.
- We are a Leader In Me Lighthouse School.
- We are the home of the Shockers.
- We Cultivate Leaders who THRIVE (are Trustworth, Honor themselves and others, show Respect, practice Integrity, demonstrate Valor, and strive for Evolving Excellence)
- We Believe....





SEECore
Paradigms**Paradigm of Leadership****NOT THIS**
Leadership
is for the
few.**BUT THIS**
Everyone
can be a
leader.**Paradigm of Potential****NOT THIS**
A few
people are
gifted.**BUT THIS**
Everyone
has
genius.**Paradigm of Change****NOT THIS**
To improve
schools
the system
needs to
change first.**BUT THIS**
Change
starts with
me.**Paradigm of Motivation****NOT THIS**
Direct and
control
student
learning.**BUT THIS**
Empower
students
to lead
their own
learning.**Paradigm of Education****NOT THIS**
Educators
focus solely
on academic
achievement.**BUT THIS**
Educators
and families
partner to
develop
the whole
person.**DO**Highly
Effective
Practices**Leadership****Start with Adults Learning & Modeling**

- Principal & Coordinator Development
- New & Ongoing Staff Learning
- Family & Community Partnerships

Teach Students to Lead

- Direct Lessons
- Integrated Approaches
- Service Learning

Culture**Create a Leadership Environment**

- Physical Environment
- Social-Emotional Environment
- Leadership Events

Share Leadership

- Lighthouse & Action Teams
- Leadership Roles
- Student Voice

Academics**Achieve Goals**

- Individual Goals
- Team Goals
- Aligned School Goals

Empower Learners

- Leadership Portfolios
- Student-Led Conferences
- Empowering Instruction

GETMeasurable
Results**Highly effective students and
adults who are leaders in their
school and community.****A high-trust school culture where
every person's voice is heard and
their potential is affirmed.****Engaged students who are
equipped to achieve and entrusted
to lead their own learning.**

HOW WILL YOU BE A LEADER TODAY?

[HTTPS://WWW.YOUTUBE.COM/WATCH?V=IQMNOWRHPA0](https://www.youtube.com/watch?v=IQMNOWRHPA0)

BE PROACTIVE
BEGIN WITH THE END IN MIND
PUT FIRST THINGS FIRST
I THINK WIN-WIN
SEEK FIRST TO UNDERSTAND
THEN TO BE UNDERSTOOD
SYNERGIZE
SHARPEN THE SAW

The
Leader
in Me
great happens here

THE FOUNDATION

LEADER: ANYONE WHO TAKES RESPONSIBILITY FOR FINDING THE POTENTIAL IN PEOPLE AND PROCESSES AND WHO HAD THE COURAGE TO DEVELOP THE POTENTIAL.

BRENE BROWN

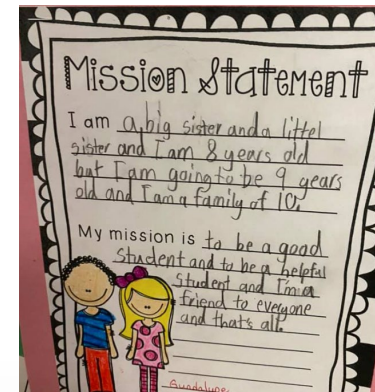
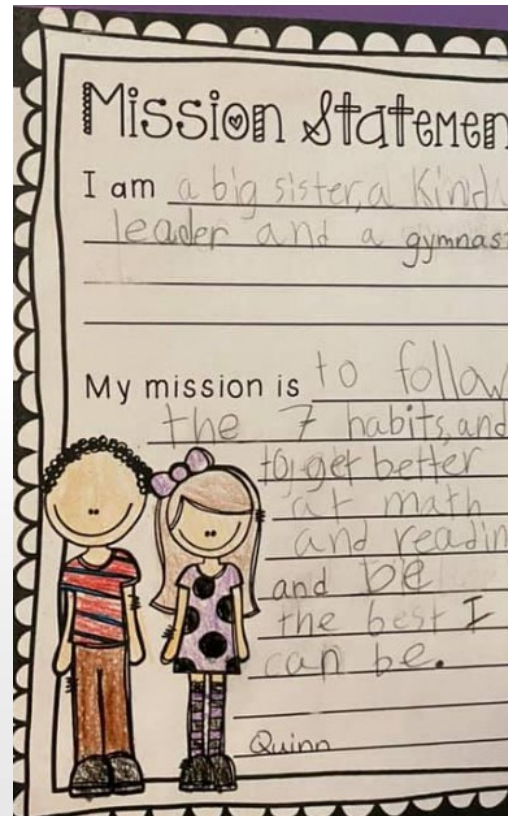
WATERVILLE'S JOURNEY (LEADERSHIP, CULTURE, AND ACADEMICS)

- It begins with a mission (so everyone finds their voice and begins to lead their own life through WIGS and core values)
- It takes shape in the classroom (SLC, goal setting, teaching skills to take ownership over learning, modeling, giving students voice over classrooms and encouraging students to lead the learning of others)
- To achieve the mission everyone has to BELONG!
- We have to allow and encourage students to create change and be world changers.
- At Waterville we try to step back to let students teach one another what it means to 'Leave a Legacy'.

**OUR LEADERS
LENDING THEIR
VOICE TO
REACH OUR
MISSION**

[HTTPS://WWW.YOUTUBE.COM/WATCH?V=Z0KWFHAP](https://www.youtube.com/watch?v=z0kWFHAP)

XLK

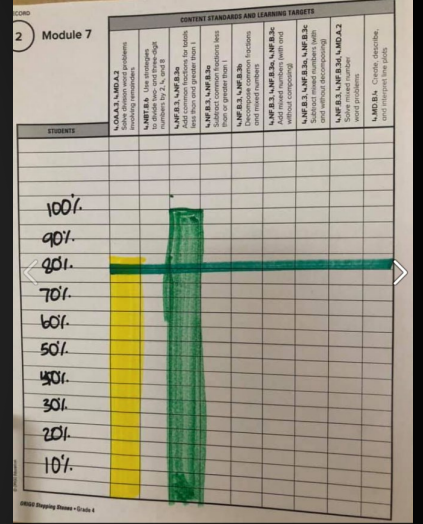
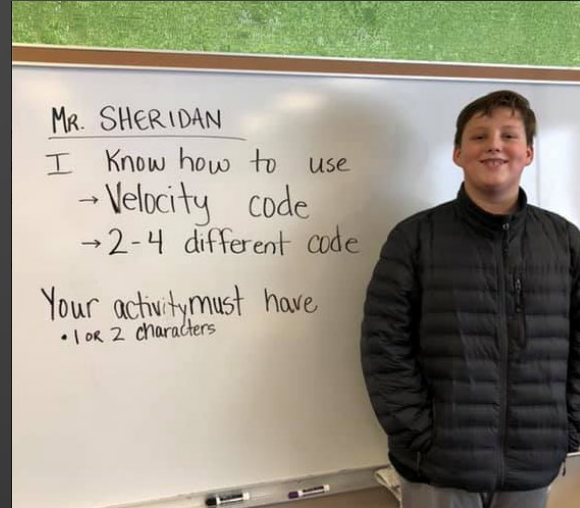


We the leaders in Room 105 will be respectful, kind, and nice. We will put first things first, synergize, and treat others as we would treat

MATH WIG
 I can recall my division facts (0, 1, 2, 5, & 10's) within 90secs. by 10

What do mathematicians do when they get STUCK on a math task???

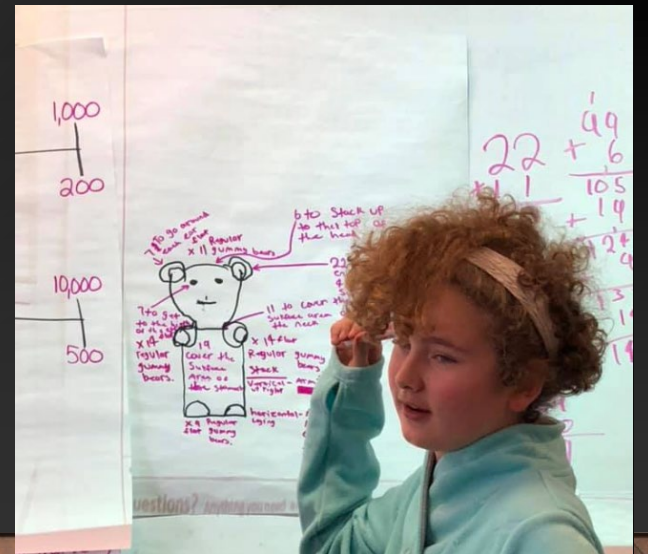
CHECK  their notes.	LOOK for a pattern.	THINK of a similar problem.
Re-read the task and  look for clues.	Re-tell the task in your own words	SKETCH a <u>MODEL</u> .
Replace the numbers  with friendly numbers.	KEEP TRYING	NEVER GIVE UP!



LEADERSHIP IN THE CLASSROOM

WHY STUDENT LED CONFERENCES?

- Students develop ownership of their learning
- Students build independence
- Students take pride in their success
- Students identify areas for improvement
- Students share knowledge and skills learned



Stop Searching
Google

VOTE Book
FOR
PRESIDENT

LEADERSHIP ROLES IN ACTION – OUR GOAL IS 100% OF STUDENTS HAVE A MEANINGFUL ROLE IN OUR SCHOOL AND COMMUNITY



STUDENT VOICE IN ACTION

- https://www.youtube.com/watch?v=_wysM31RVLo
- <https://www.youtube.com/watch?v=UZCnqJNgjEk>
- <https://www.youtube.com/watch?v=9vao7YLjibc>

LEADERSHIP BRINGS CHANGE





MENTORING



THE SECRET SAUCE.... SYNERGY

- <https://www.youtube.com/watch?v=ws6b6cKKrdo>

OUR SCHOOL AND CONTACTS

- Facebook: Waterville Shockers
- Website: WatervilleSchool.org
- Instagram: Waterville_shockers
- Elementary Principal tkendrick@Waterville.wednet.edu
- Lighthouse Coordinators jmullen@Waterville.wednet.edu and jgrillo@Waterville.wednet.edu
- ASB Leaders ekatovich@g.Waterville.wednet.edu and bwillms@g.Waterville.wednet.edu and memittelstaedt@g.Waterville.wednet.edu
- Tabatha Mires tmires@Waterville.wednet.edu