



# Telling Your Financial Story



**#Washougal** *Rising*  
KNOW • NURTURE • CHALLENGE

# Hello!

## I am Kris Grindy

Washougal School District

Director of Business & Operations

WASBO Board of Director - ESD112 Regional

Email: [kris.grindy@washougalsd.org](mailto:kris.grindy@washougalsd.org)



WASBO | CONNECT. GROW. LEAD.  
WASHINGTON ASSOCIATION OF SCHOOL BUSINESS OFFICIALS



## Discussion Points

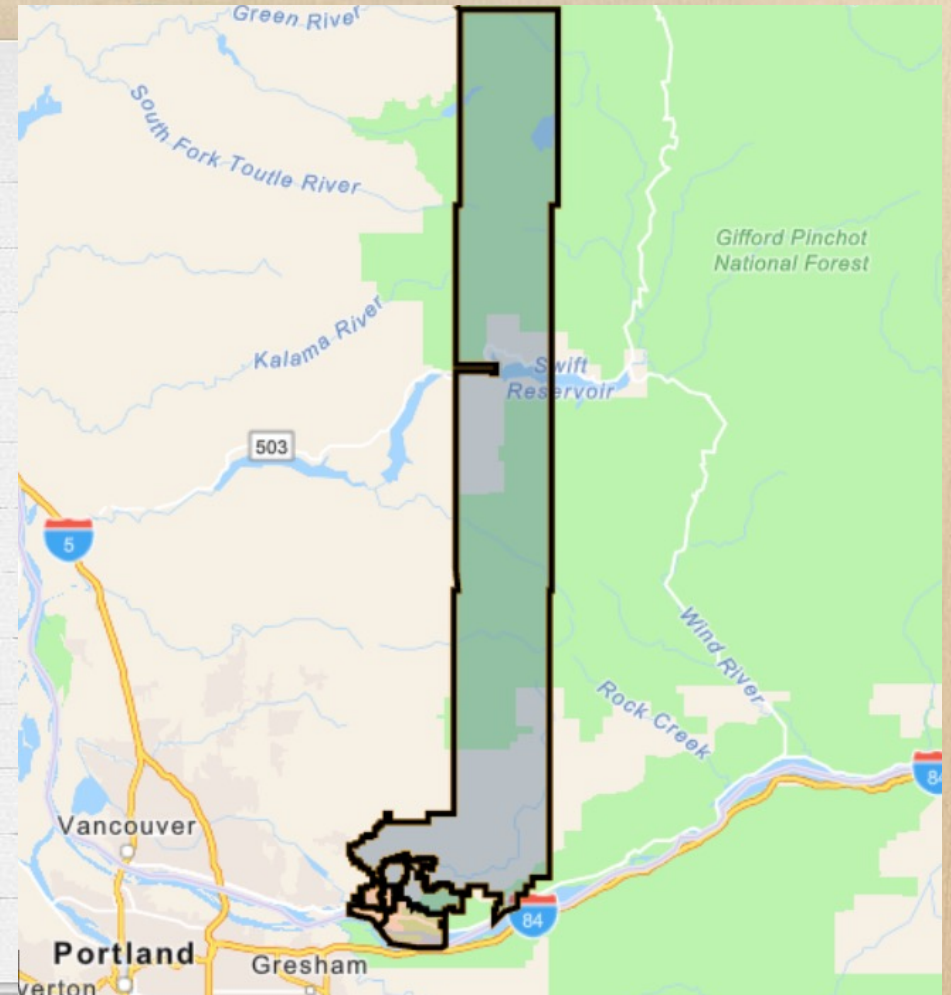
- x Introduction to Washougal
- x Strategic Plan
- x Bargaining Communications
- x Levy Complexities, Engaging Stakeholders Voice
- x Relationships Matter!

Washougal knows, nurtures, and challenges all students to rise.



# Washougal School District

- X Located in SW Washington - ESD112
- X Clark and Skamania County
- X District Spans 367.21 sq. miles
- X Washougal Population - 22,234
- X Student Population - 2,805 AAFTE
- X Total Washougal School District Voters - 15,754
- X Operating Budget \$50.6 Million
- X Approximately 600 staff members





**BE YOU.  
BE KNOWN.**

**BE YOURSELF**

**BE CHALLENGED**

**BE ON THE FIELD**

**BE ENGAGED**



# Stewardship of Resources

- Goal of Financial Stabilization
- Continue to make progress toward prototypical alignment
- Make Every Dollar Count
- Prioritize Maintenance of Sustainable Reserves





# Discussion

How does your district use your strategic plan to inform your fiscal story?





**#Washougal** *Rising*  
KNOW • NURTURE • CHALLENGE

## Bargaining Communications



## Where is the new \$4.3 million in McCleary money going?

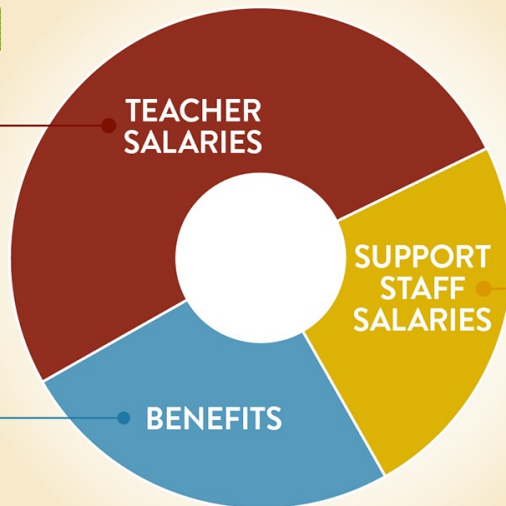


Salary increases for licensed educators:  
**\$2,175,010**



Cost increases to existing staff benefits, like health insurance and retirement:  
**\$1,051,756**

### 2018-19 WASHOUGAL EXPENDITURES INCREASE\*



Salary increases for support staff, like para-educators, bus drivers & food service staff:  
**\$1,091,100**

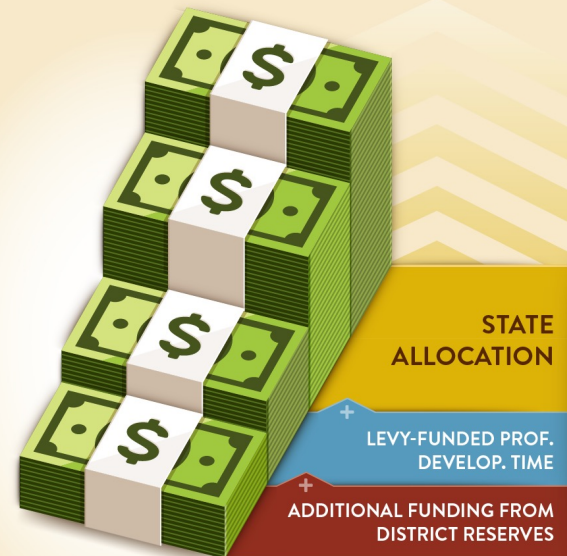
\* DISTRICT OFFER AS OF 8/28/18

## Newest district offer: Full state allocation...and then some.



Proposed total compensation for our teachers at top of pay scale =

# \$94,650



Offer presented on 8-31-2018.

# Doesn't the State fully fund Education Now?

Fiscal Complexities

- X McCleary Changes
- X Levy Caps
- X Staff Mix
- X Regionalization
- X Special Education
- X SEBB

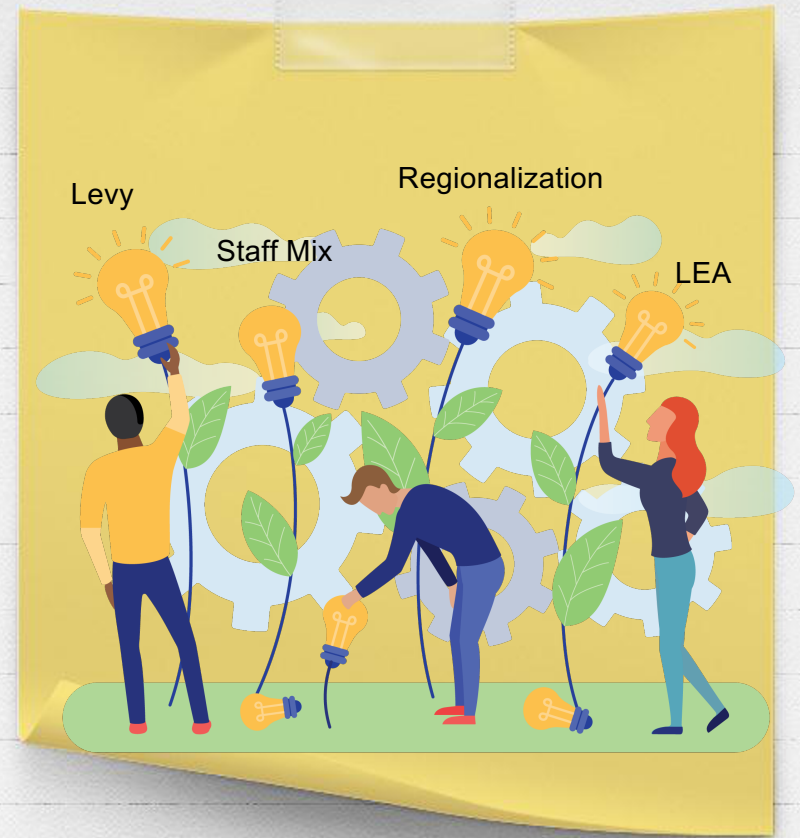




# Fiscal Complexities

Engaging in strategies to:

- ✓ Investing in Rigorous Student Instruction to challenge **ALL** students to rise
- ✓ Value our Workforce
- ✓ Making every dollar matter [Find Efficiencies]
- ✓ Data Informed Decisions



## Finding Efficiencies

- ✓ Hiring Practices [Evaluation of Positions]
- ✓ Building Budget Freeze & Later Reduction of 50%
- ✓ Spending Freeze
- ✓ Contract Review
- ✓ Community Relationship and Partnerships
- ✓ Class of 2020 – Flag Project
- ✓ Facilities Materials Reduction (Baseball Fields & Weed and Feed)

## Reprioritizing Resources





## Discussion



Share with your seat partner how these financial complexities has shaped your district's financial story? Considerations: Must Do, Could Do and Could Stop.



**#Washougal** *Rising*  
KNOW • NURTURE • CHALLENGE

## Levy Complexities



# Levy Road Map Roadmap

Levy Resolution  
27 Levy Roadshows



Levy Failure



Levy 2.0 Reboot!  
Stakeholder Survey  
Board Listening Tours



Levy Contingency  
Planning (What if we fail?)



WE FAILED! Next Steps?  
-Rerun?  
-Timeline?  
-Budget Planning Impacts (Double and  
Enrollment Decline)



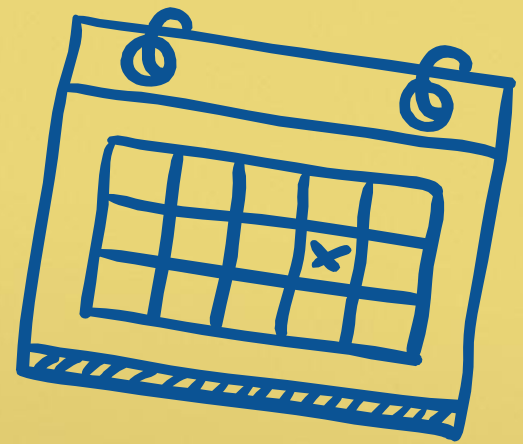
Levy Success 2<sup>nd</sup> Attempt

# Levy Campaigns





# 70 Days



# Community Engagement



- X Survey
- X Board Listening Tours
- X Incorporate Student Agency
- X What's the Impact?





What's At Stake?





## Future Plans to Communicate Financial Stewardship

- x Clean Audits
- x Office Hours Newsletter
- x Community Newsletter
- Business Page
- x Business Button - website





# Where did all the Money Go?

Opportunity to share about  
how ESSER Funds were  
spent; what levies fund and  
how school finance works!



## *Student Agency*

*"Kids are our future. Please  
let us realize our full potential  
so the world can adapt and  
grow for the better once it's  
our turn to change it."*







**#Washougal** *Rising*  
KNOW • NURTURE • CHALLENGE

Relationships  
Matter!

# Perfect Storm - Relations Matter

## Together

- X Effective Teams = Accomplishing GREAT "wins" for Kids:
  - X Award winning
  - X Chef-Inspired Meals
  - X We got a Food Truck!
- X Legislatively Advocacy

## Data Matters

- X What are you chasing?
- X Are you reaching your outcomes?
- X Are you measuring what your chasing?
- It is now on our Strategic Plan
- "Measures of Progress"

## Future Focus

- X Investments in PLCs
- X Investments in MTSS
  - X Expanding PBIS
  - X Transportation
  - X AVID K-12
- X Student Agency! Student's Co-authoring their futures



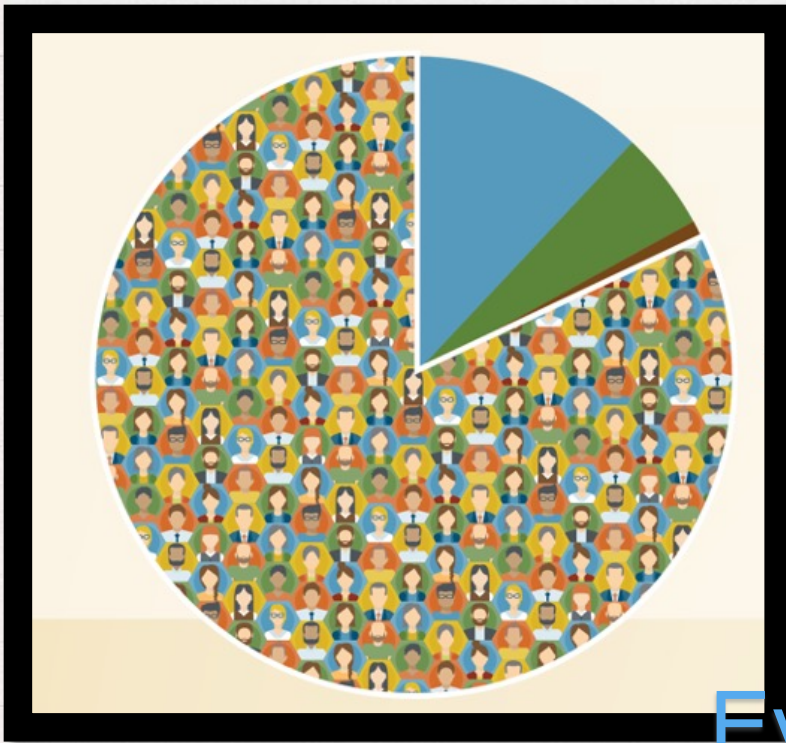
# Budget Development

**SCHOOL DISTRICT NO. xxx-x**  
**2022-23 BUDGET DEVELOPMENT CALENDAR**  
 (60 Day Legislative Session Will Convene January 10, 2022 to March 10, 2022)  
 Updated Date

December 2021	<i>Development of Budget Calendar Process</i>	Superintendent & Executive Team
	<i>Develop Budget Principles for 2022-23 FY</i>	
January 2022	<i>Develop Conservative Staffing Projection for 2022-23 FY</i>	HR and Budget Team
	<i>Develop Draft Budget Plan</i>	Superintendent & Executive Team
	<i>Gather Feedback from Leadership Team on Draft Budget</i>	Superintendent & Leadership Team
	<i>Seek Input from Stakeholder Groups (staff, parents, students, community members)</i>	Communications Team
February 2022	<i>Present preliminary Draft Budget to School Board and Gather Feedback</i>	Superintendent and Budget Team
	<i>Request Bargaining Parameters from School Board</i>	Superintendent, HR and Budget Team
March 1, 2022	Staffing Allocations Provided to Principals (Preliminary Elementary)	
March 15, 2022	Staffing Allocations Provided to Principals (Preliminary Secondary)	
March 10, 2022	Biennial Legislative Regular Session ends	
March 31, 2022	<ul style="list-style-type: none"> <li>- Legislative and State Revenue Update</li> <li>- Enrollment Projection Update</li> <li>- Draft Budget Adjustments on current Legislative Updates</li> <li>- Board Preliminary Budget Update</li> </ul>	

- Budget Development Calendar should communicate a high level budget process for the board
- Who is involved?
- What can they expect?

## Business & Superintendent Team Together



- ✓ Our alignment to the district resource spends and outcomes are linked to Superintendent leadership
- ✓ Having a strong relationship is key to the success of the district

Every Dollar Matters!



# Strategic Plan – Measures of Progress



## EFFECTIVE INSTRUCTION

9th Grade on Track  
**65.5%**  
2020-21 SCHOOL YEAR  
68.4% statewide  
Target: 100%



## CAREER & COLLEGE READINESS

On-Time Graduation Rate  
**87.2%**  
2020-21 SCHOOL YEAR  
82.5% statewide  
Target: 100%



## EQUITY

9th Grade on Track:  
Students with Disabilities  
**57.9%**  
2020-21 SCHOOL YEAR  
58% statewide  
Target: 100%



## EDUCATIONAL ENGAGEMENT

High School Students  
Engaged in an  
Extracurricular Activity  
**34.9%**  
2020-21 SCHOOL YEAR  
Target: 100%



## PARTNERSHIPS TO SUPPORT STUDENTS

Community Partners  
**28**  
2020-21 SCHOOL YEAR  
Target: 40



## STEWARDSHIP OF RESOURCES

Audit Findings  
Over 5 Years  
**0**  
2020-21 SCHOOL YEAR  
Target: 0

# Thanks!

## Any questions?

You can find me at:

X Email: [kris.grindy@washougalsd.org](mailto:kris.grindy@washougalsd.org)





## Resources Page

- ✓ Washougal School District Strategic Plan 2019-2025
- ✓ Washougal Rising – Know, Nurture, Challenge to Rise (YouTube)
- ✓ WSD Levy webpage
- ✓ WSD Levy (YouTube) Growing Education: What's the Difference Between a Levy and a Bond?
- ✓ WSD Levy (YouTube) Washougal School District Levies - information for the February 14 ballot
- ✓ WSD ESSER Spending Fact Sheet



**WASBO** | **CONNECT. GROW. LEAD.**  
WASHINGTON ASSOCIATION OF SCHOOL BUSINESS OFFICIALS

WASBO Elevate Your Team

**WASBO** | **CONNECT. GROW. LEAD.**  
WASHINGTON ASSOCIATION OF SCHOOL BUSINESS OFFICIALS