

# WASA Professional Learning



# 22-23 Professional Learning



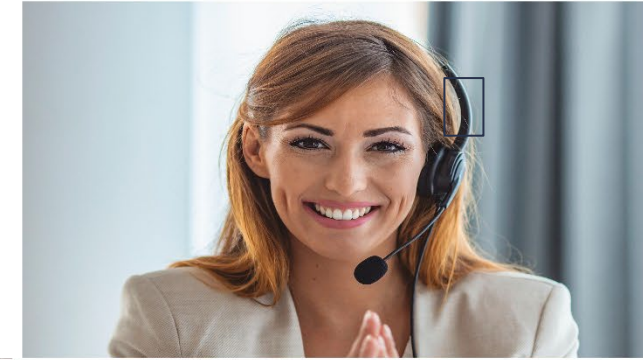
# Statewide Comprehensive Professional Learning



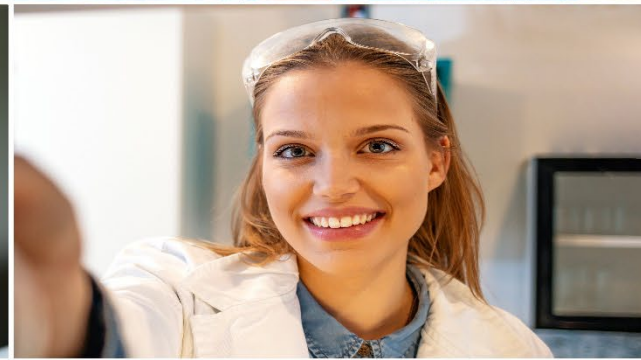
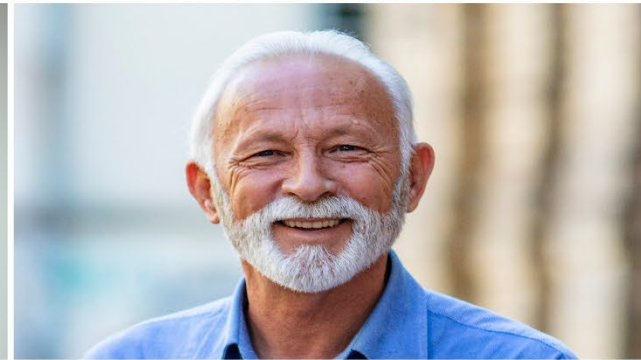




# Leadership Coaching Partnership 2023-2024









# Why Leadership Coaching with BTS Spark?

WASA continually seeks opportunities to enhance support of Washington's educational leaders. Historically, WASA has supported all members through season conferences. In recent years we've added academies and initiatives to provide on-going small group professional learning and peer collaboration.

Knowing each district has a unique context, WASA is thrilled to add a new layer of proactive support for individual leaders. Though a partnership with BTS Sparks confidential, accessible, and affordable leadership coaching is now available.

WASA believes the combination of supports we offer will profoundly advance the implementation of the initiatives central to your district's goals and WASA's dedication cultivating Leadership, Trust, Advocacy and Equity.

BTS Spark exists to provide schools with access to world class leadership coaching at not-for-profit pricing. They strive to help every school leader feel confident, resourceful and fully capable, so that all school communities benefit from empowered, supportive school leadership.



**300**  
executive coaches  
worldwide

**18,000**  
education  
leaders coached

**>99%**  
of participants  
change their  
leadership

# BTS Spark



Not-for-profit practice



Supporting school leaders



Coaching & workshops



Curriculum of 33 leadership mindsets



280  
coaches  
worldwide

18,000  
school leaders  
coached

>99%  
of participants  
change their  
leadership

# Mindset Map

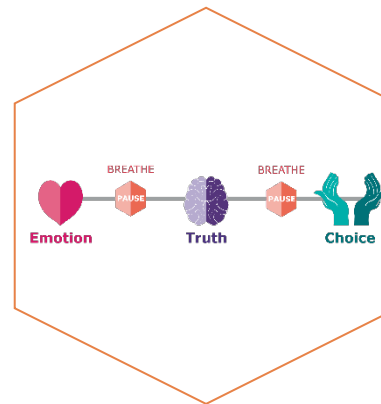
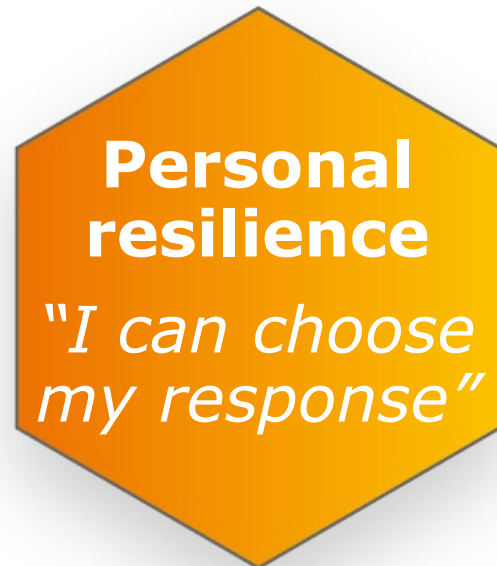




# How do we help leaders make a mindset shift?

For each mindset ...

- *Online leadership insights*
- *Practical tools and strategies*
- *Personal reflection exercises*
- *Transformational process facilitated by an expert coach*
- *Flexible delivery modes (see right)*



The screenshot displays the 'Personal Resourcefulness' application interface. At the top, a green header bar contains the app's name, 'Personal Resourcefulness', and a subtitle, 'Taking People with You'. Below the header, a central vertical timeline is visible, marked with a red 'TIMELINE' label at the top. The timeline consists of three steps, each represented by an icon (a video camera, a lightbulb, and a document) and a corresponding text box. Step 1, '1) Why on Personal Resourcefulness?', includes a video thumbnail and a 'View Online' link. Step 2, '2) Insight - In and Out of the Box', includes 'View Online' and 'Download' links. Step 3, '3) Exercise One - In and Out of the Box', also includes 'View Online' and 'Download' links. The bottom of the screen features a navigation bar with three tabs: 'Me' (person icon), 'Timeline' (list icon, currently selected), and 'My Coach' (headset icon).

Powered By:  **bts**



# Flexible Leadership Coaching



## Overview

Everyone's context is unique, so it's no surprise that flexible programs are our most popular offer.

Simply choose your first module (or ask us for advice!) and get started immediately. Most people request programs spanning 2-3 modules.

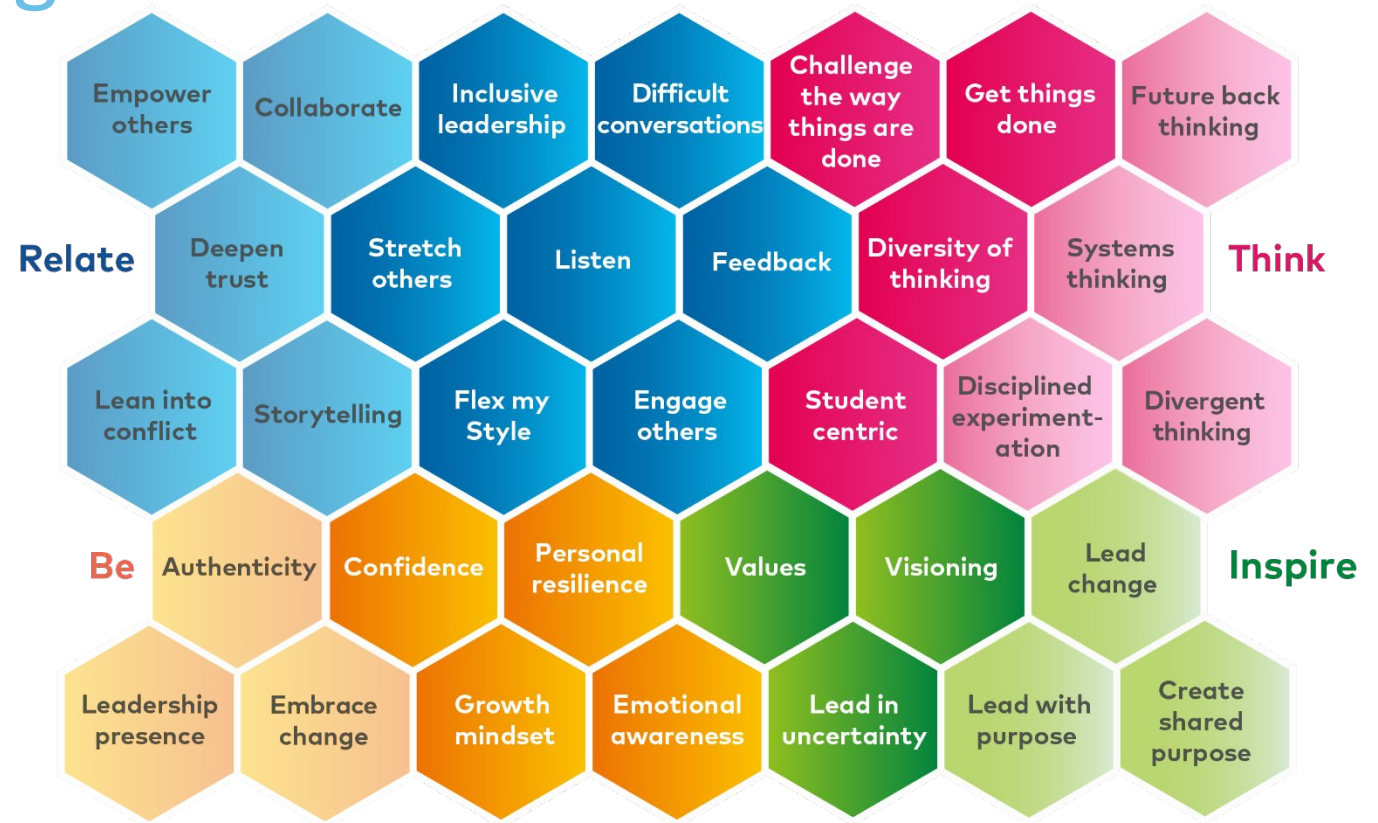
Every module can be delivered by our coaches through 1-1 coaching, group coaching or workshop.



## Learning objectives

33 modules are available, offering a chance for you to widen your skillset and gain new strategies in...

- *Relate* – critical people leadership skills
- *Be* – emotional intelligence, confidence and resilience
- *Inspire* – motivating yourself & others
- *Think* – leading school improvement



*Each of these modules is available as 1:1 coaching, group coaching or workshop.*

## 1-TO-1 COACHING

Flexible coaching journeys can be of any length. Each coaching module comprises two coaching sessions with a personal leadership coach & online learning

\$1590 USD (6\*60 mins sessions)

**Over 99% of those we coach say  
they have changed their leadership**

**us@btsspark.com  
btsspark.org**

# How has coaching impacted school and District leaders?

These feedback scores show how school leaders participating in the Surviving to Thriving Program perceive their coaching has impacted them.

- Leaders typically report having a much greater awareness of self, a stronger sense of how they can be most effective in their personal and professional lives and a deeper understanding of their core values and the alignment with their work at school.

Principals, VPs, District Leaders were asked to self-rate...	Before	After
I have strategies to stay resilient and effective in stressful situations...	64%	100%
I am able to create balance in my life...	44%	90%
I have a clear vision for the new school year...	43%	100%
I feel that I have the tools to manage energy-sapping relationships...	30%	100%
I feel confident in having difficult conversations...	39%	90%



# WASA Executive Leadership Coaching Pilot

- November 2022– January 2023
- Five leaders coached (3 Superintendents, 2 WASA Leaders)
- Each leader had 3 x 60 min coaching sessions with a BTS Spark Executive Coach



Michelle Whitney  
Pasco School District



Dr. Jeff Snell  
Vancouver Public Schools



Dr. Kathi Weight  
Steilacoom Historical  
School District No. 1



Mike Nelson  
Assistant Executive  
Director, WASA



Kim Fry  
Professional Learning  
Coordinator, WASA

# What do leaders say about BTS Spark Coaching?

*"It is incredibly valuable to have someone to talk things through with. I feel much calmer now and more confident to tackle any situation — like "bring it on!"*

*-Director of Schools*

*"The mountains I had in my mind about my role, have become hills with the support of my coach."*

*-Superintendent*

*"My mind has been blown! I can never look at things in the same way again. I can never go back to thinking, feeling and acting in the same way I did before."*

*- Principal*





# What do leaders say about BTS Spark Coaching?

"The coaching sessions helped build my confidence in areas that I identified as "areas of growth". These sessions served as a powerful "co-regulation" tool for me and encouraged me to leverage my strengths, with subtle changes to improve my performance. I enjoyed the resources provided since they were individualized to my leadership needs at that moment."

- WASA Pilot Superintendent

*"This experience provided a level of support that we typically do not see because of how isolated the superintendency can be. I feel like the coaching kept me on track to achieve my goals and added new perspective to my approach on leading my district. Questions and strategies shared were powerful and are ones that I will take into my own leadership practice and use with the people that count on me to lead."*

- WASA Pilot Superintendent



# Supporting WASA leaders to reach their potential

We are deeply committed to ensuring that every leader is supported to do their best work.

**Reach out for a conversation about your needs or the needs of leaders in your school district. Make sure to mention “WASA” in your reach out.**

Email: [alyssa.gallagher@btsspark.org](mailto:alyssa.gallagher@btsspark.org)

Phone: [203.391.5222](tel:203.391.5222) (office)  
[858.699.4347](tel:858.699.4347) (cell)

Website: [btsspark.org](http://btsspark.org)



Alyssa Gallagher  
Co-Head of BTS Spark

Interested?



SCAN ME





# WASA Professional Learning



# 2022 -2023 Professional Learning

5 In-Person Conferences  
2 Virtual Conferences

8 Regional Events



33 Academy Sessions

12 Lunch & Learn Events  
3 Hanover Sessions

55 Initiative Sessions