

Charting the Course of AI for your District

Michelle Kuss-Cybula, Ed. D
mkuss-cybula@ohsd.net



#ONEOAKHARBOR

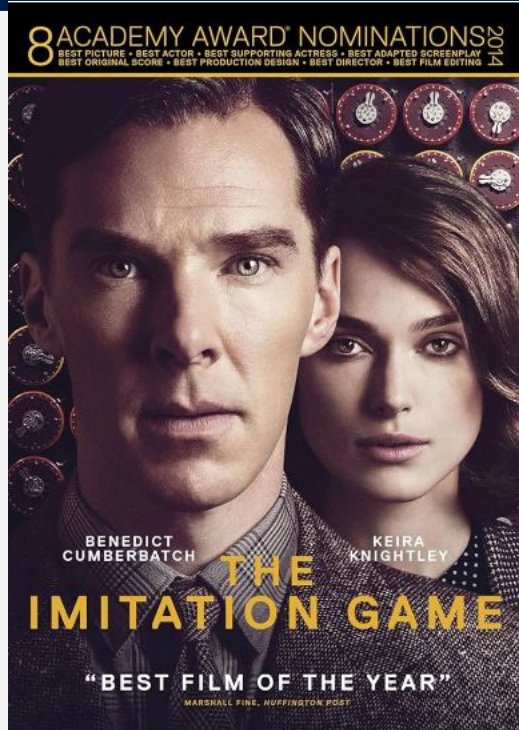


HISTORY of AI



#ONEOAKHARBOR

Machine Intelligence



Alan Turing, British Polymath:

“I propose to consider the question 'Can machines think?'"

-1950



#ONEOAKHARBOR

Put a finger down if you have, in the past month ...



Used Google
Maps/Waze
to suggest a
route for you
to travel.



Had a
recommendation
on Spotify /
Netflix /
YouTube.



Had
Grammarly
correct
something
in your
writing.



Used a
Google
Search
suggestion.



Used facial
recognition
to unlock
your phone.



#ONEOAKHARBOR

What is Artificial Intelligence?



DEFINITION

AI is a system that uses algorithms and data to solve problems by finding patterns, making decisions and creating solutions to meet human-designated goals.

Turn and Talk

How have you seen AI used in education to close equity gap?

- MLL
- Special Education
- Family Engagement
- Scaffolding
- Interventions



BENEFITS OF AI



#ONEOAKHARBOR

Establishing a Roadmap



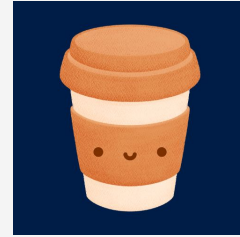
Set Clear Goals and Vision

- **Define the specific purposes** for using AI. Do you want to personalize learning, improve assessment, streamline teacher workloads, or enhance decision-making?
- **Develop a vision** that guides your approach, making sure it aligns with your school's educational priorities.



#ONE

Management Center



Free Resources, Templates & Strategies for Effective Management with a focus on educational organizations

- [Project Plan - Detailed](#)
- [Simple Project Plan](#)

**Book
Recommendation:**



#ONEOAKHARBOR

Address Infrastructure and Resources

2

- **Evaluate** existing technology (hardware and software) to ensure it can support AI applications.
- **Secure** any necessary upgrades to internet connectivity and bandwidth.
- **Plan** for funding to cover AI tools, hardware, and ongoing maintenance.



#ONE

Build Staff Capacity

3

- **Offer professional development** to help teachers understand AI fundamentals, applications in education, and how to integrate AI tools ethically.
- **Support continuous learning** and knowledge sharing among educators.
- **Create a culture where teachers feel encouraged** to experiment with AI and collaborate with peers.



#ONE

Benefits of AI for Staff

Automated grading and feedback: Reduce time spent on grading and provide students with immediate, personalized feedback.

Content creation and adaptation: Utilize AI tools to generate lesson plans, differentiate instruction, and create accessible materials.

Data analysis and student progress tracking: Gain insights into student learning patterns, identify areas needing improvement, and tailor instruction accordingly.

Administrative tasks automation: Free up teachers' time by automating tasks like scheduling, attendance tracking, and communication with parents.



#ONEOAKHARBOR

Develop AI Literacy for Students

4

Teach students about AI concepts, helping them understand how AI works and its uses.

Emphasize AI's impact on society and promote the development of computational thinking.

Encourage students to use AI tools creatively and think critically about AI applications.



#ONE

Benefits of AI For Students:

Personalized learning platforms: Adapt to individual learning styles and pace, providing students with the right level of challenge and support.

Intelligent tutoring systems: Offer real-time guidance and feedback, answer questions, and provide additional practice opportunities.

Accessibility tools: Text-to-speech, language translation, and other tools can support students with diverse needs.

Creative exploration tools: Encourage creativity through AI-powered tools for music composition, storytelling, and visual arts.



#ONEOAKHARBOR

Establish Ethical Frameworks and Data Privacy

5

Develop clear guidelines on the proper use of AI, including handling student data, bias, and transparency.

Actively protect student privacy and ensure data security.

Align board policies: (2022/2022P, 2023)

**NEW- 2023F2 (AI classroom protocol) and 2023F4
(Student AI use pledge)**

Establish Ethical Frameworks and Data Privacy

6

Research AI tools that align with your goals, budget, and technical expertise.

Seek out well-established tools with proven educational benefits and reliable support.

Consider these potential AI applications:

- Personalized learning platforms
- Intelligent tutoring systems
- AI-powered writing assistants
- Data analysis tools for school improvement
- Automated administrative support tools

#ONE



Staff Resources

- [13 ways ChatGPT can reduce teacher workload](#)
- [ChatGPT Prompts](#)
- [AI in Education: Prompts for Formative Assessment](#)
- [5 Ways to Leverage AI for Student Supports and Scaffolds](#)
- [10 ways Curipod engages your students with AI](#)
- [Assessment with AI and GPT](#)
- [A teacher's guide to using ChatGPT](#)
- [Resources for thinking about Chat GPT and AI](#)

District

Supported/Approved Digital Tools

- [Flip - Topic Copilot](#)
- [Edpuzzle - Teacher Assist](#)
- [Canva](#)
 - [Image Generator](#)
 - [Magic Design](#)
- [Curipod](#)
- [MagicSchool.ai](#)
- [Diffit](#)
- [Chat GPT](#)
- [Google Bard](#)
 - [Learn more](#)

Staff Resources

- [13 ways ChatGPT can reduce teacher workload](#)
- [ChatGPT Prompts](#)
- [AI in Education: Prompts for Formative Assessment](#)
- [5 Ways to Leverage AI for Student Supports and Scaffolds](#)

Pilot and Evaluate

7

- **Start with small-scale** pilot projects in specific classrooms or subjects.
- **Gather feedback** from teachers, students, and parents.
- **Measure the impact on learning** outcomes and adjust your approach accordingly.





CHALLENGES & CONSIDERATIONS



#ONEOAKHARBOR

Challenges & Considerations

Equity and access: Ensure all students have equal access to AI tools and the benefits they provide. Make sure AI applications benefit all students and minimize **any potential biases**.

Ethical considerations: Address potential biases in AI algorithms and promote responsible development and use.

Teacher workload and job displacement: Focus on AI as a tool to empower teachers, not replace them.

Collaboration: Foster collaboration between teachers, technology specialists, admin, and potentially external experts and researchers.

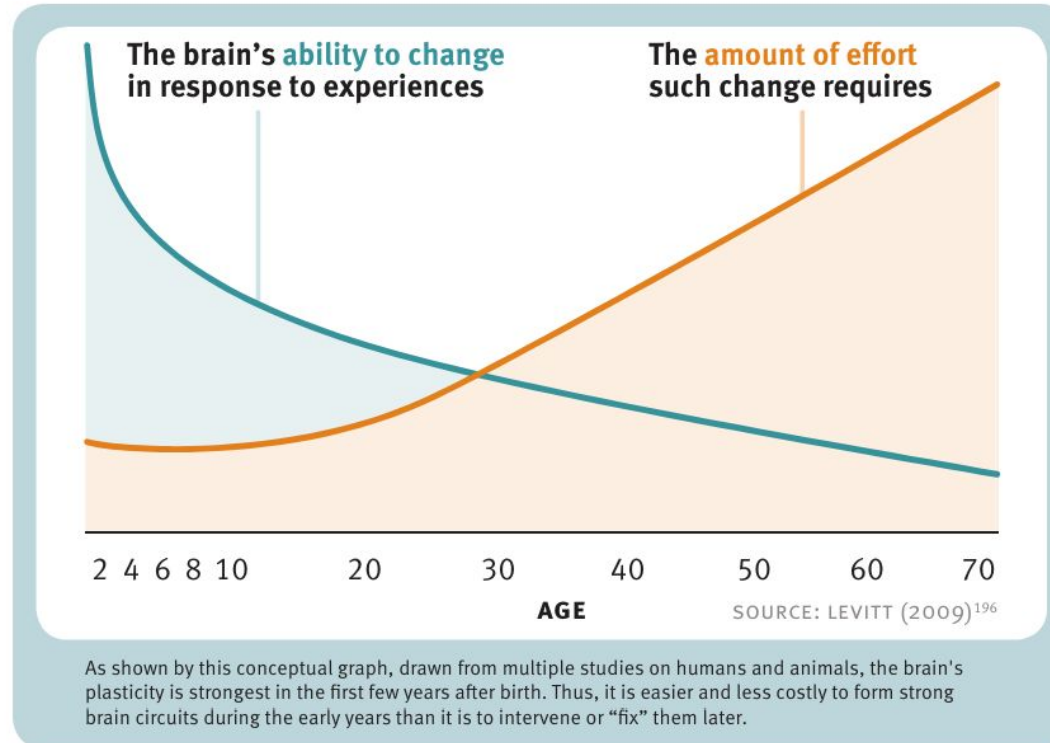
Communication: Openly communicate with parents and the community about how AI is being used and why. Address potential concerns and build trust.



#ONEOAKHARBOR

Developing Child Research Study

Understanding why some people develop the adaptive capacities to overcome significant disadvantages while others do not is key to enabling more children to experience positive outcomes and building a more resilient society.



Stop Telling our students not to use AI...

“Our students are not vying for success in our generation's landscape but in their own, where AI is as fundamental as the internet and smartphones were for you. Encouraging them to navigate AI's potential and pitfalls now prepares them for a future where they're not just users, but masters of this technology. Why not set a new standard that evaluates not only the results but the innovative and responsible use of AI?”



#ONEOAKHARBOR

ADDITIONAL RESOURCES



#ONEOAKHARBOR

RESOURCES

Links of interest:

[AI In Education](#) FAQ from OSPI

[AI Integration: Leadership Checklist](#)
from OSPI

[Human Centered AI: Guidance for K - 12 Schools](#) from OSPI

[Tech Talk for OHPS Staff-](#) given at
each building

Articles and materials:

[How to Prevent AI from Doing All of the Thinking](#) - John Spencer is one of my favorites.

[Common sense AI Literacy lessons](#)
for 6 - 12

[AI Vocabulary for Teachers](#)

[When Should Students Use AI?](#)



#ONEOAKHARBOR

A Special Thanks to:

- Tech TOSA, Nicole Bouvion
- Tech Director, Tyler Starkovich
- Director of Communications, Sarah Foy
- Tech coaches and,
- our T&L team



OAK HARBOR

Public Schools



#ONEOAKHARBOR