



WASA SPECIAL EDUCATION DIRECTOR ACADEMY

Welcome to Session #3 of Special Education Director Academy!

We're glad you are here!





Materials can be accessed on [WASA website](#)

Agenda



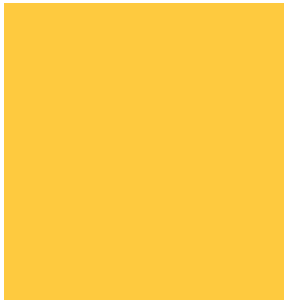
8:30-10:00

Topic: MTSS-What the Special Education Director Needs to Know

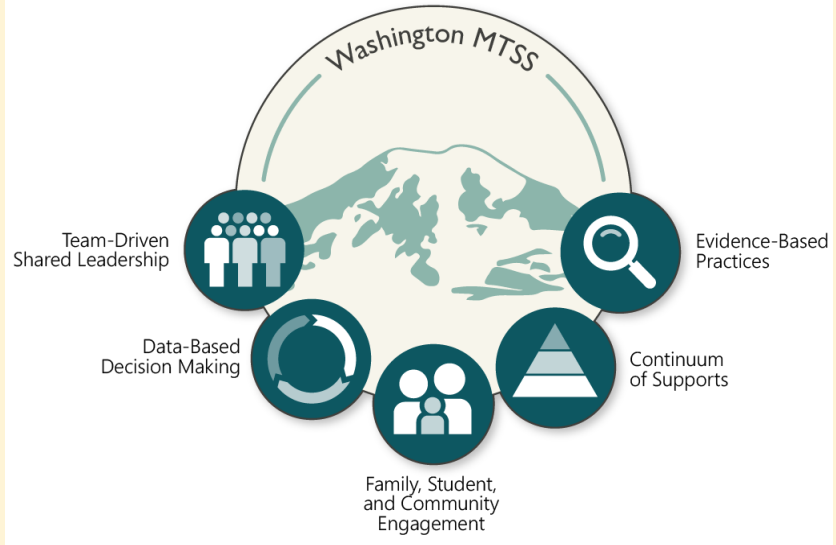
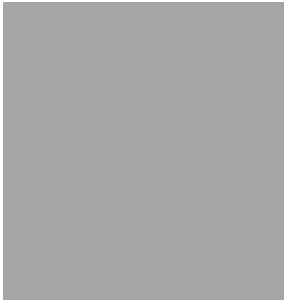
1. RJ Monton, OSPI
2. John Sander, Franklin Pierce School District
3. Processing Time
4. Wrap-Up



Washington Office of Superintendent of
PUBLIC INSTRUCTION



PPT link



Franklin Pierce Schools

[PPT Link](#)



RESOURCES

1. [Inclusive Teaching Practices Washington State Inclusionary Practices Handbook Chapter 3](#)
2. [Washington's Multi-Tiered System of Supports Framework](#)
3. [OSPI's MTSS webpage](#)
4. [What Is "Special" About Special Education? Specially Designed Instruction for Students With Disabilities Within a Multi-tiered System of Supports](#)
5. [Intensive Intervention: Myths and Facts](#)
6. [Improving Instruction, Accessibility, and Outcomes. MTSS/UDL/DI Module. CSULA](#)

Think Tank Time



1

Breakout Room

1. What resonated with you?
2. Share challenges
3. Share ideas

2

Personal Time

1. Reflect
2. Review resources
3. Plan action steps

Upcoming Sessions

January 5th Building the Budget and Grant Management

February 2nd Dyslexia in Washington

March 2nd Disproportionality

May 4th Attract, Prepare, Support and Retain Staff

June 1st Restraint & Isolation: What You Need to Know

All sessions 8:30-10:00





WASA SPECIAL EDUCATION DIRECTOR ACADEMY

Thank you

